



A4LE 2024 Learning Scapes Conference

# A Community High School Centering the Non-Traditional Student

October 17, 2024



**Russ Romas**  
he/him  
Principal  
Creekside Community  
High School



**Katrin Dougherty**  
she/her  
Director  
Supa Fresh Youth Farm



**Mark Schopmeyer**  
he/him  
Project Architect  
Bora Architecture & Interiors



**Amy Running**  
she/her  
Interior Designer  
Bora Architecture & Interiors

# Learning Objectives

- Understand the importance of a **broad approach to information gathering** during the programming phase of an alternative education program.
- Learn how the **integration of outside programs and partnerships** affects graduation and retention rates for student populations who are at risk of dropping out.
- Correlate both detailed program information-gathering and sustainable design strategies to **achieving a net zero** educational facility.
- Understand how small and large design features can help support and **foster a community culture** of inclusion and diversity.





**1** Mission & Diversity of the Creekside HS

**2** Hands On Learning: Supa Fresh

**3** Aligning Mission & Place

**4** Outcomes & Metrics





Mission &  
Diversity of  
Creekside  
Community







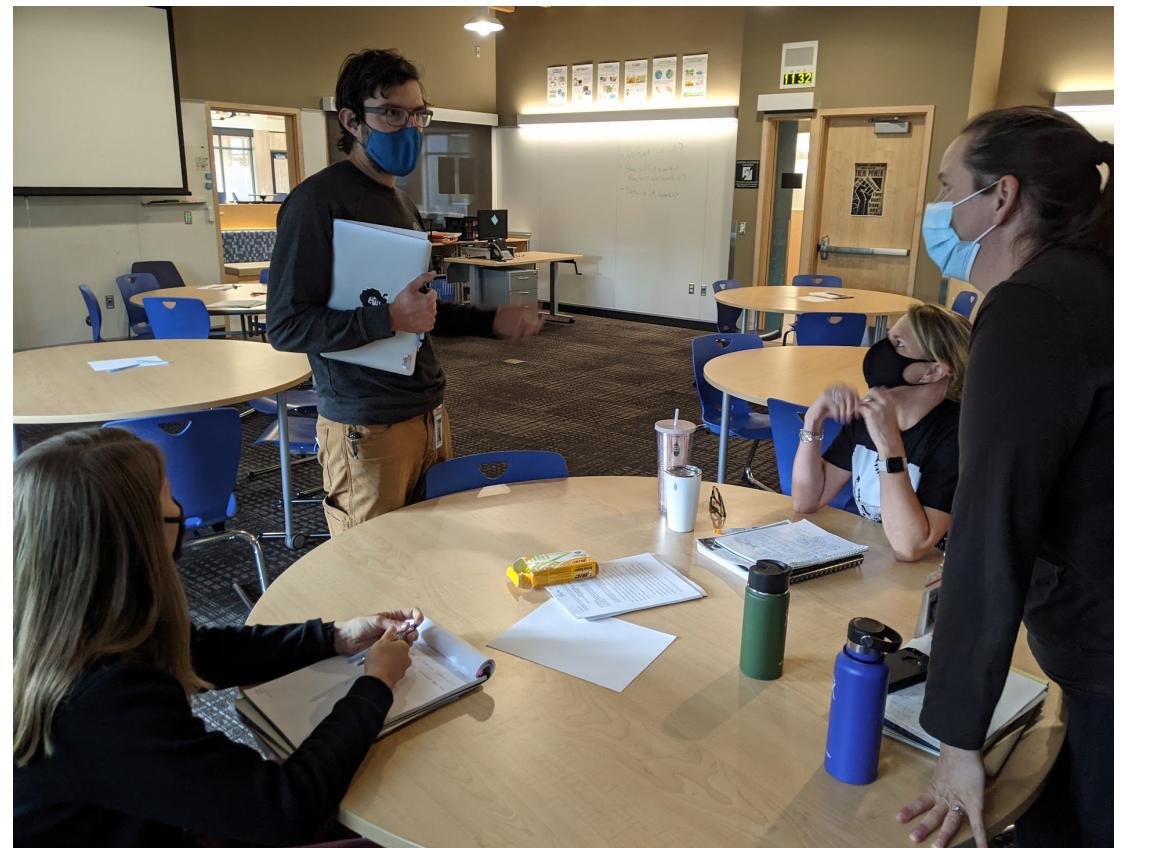
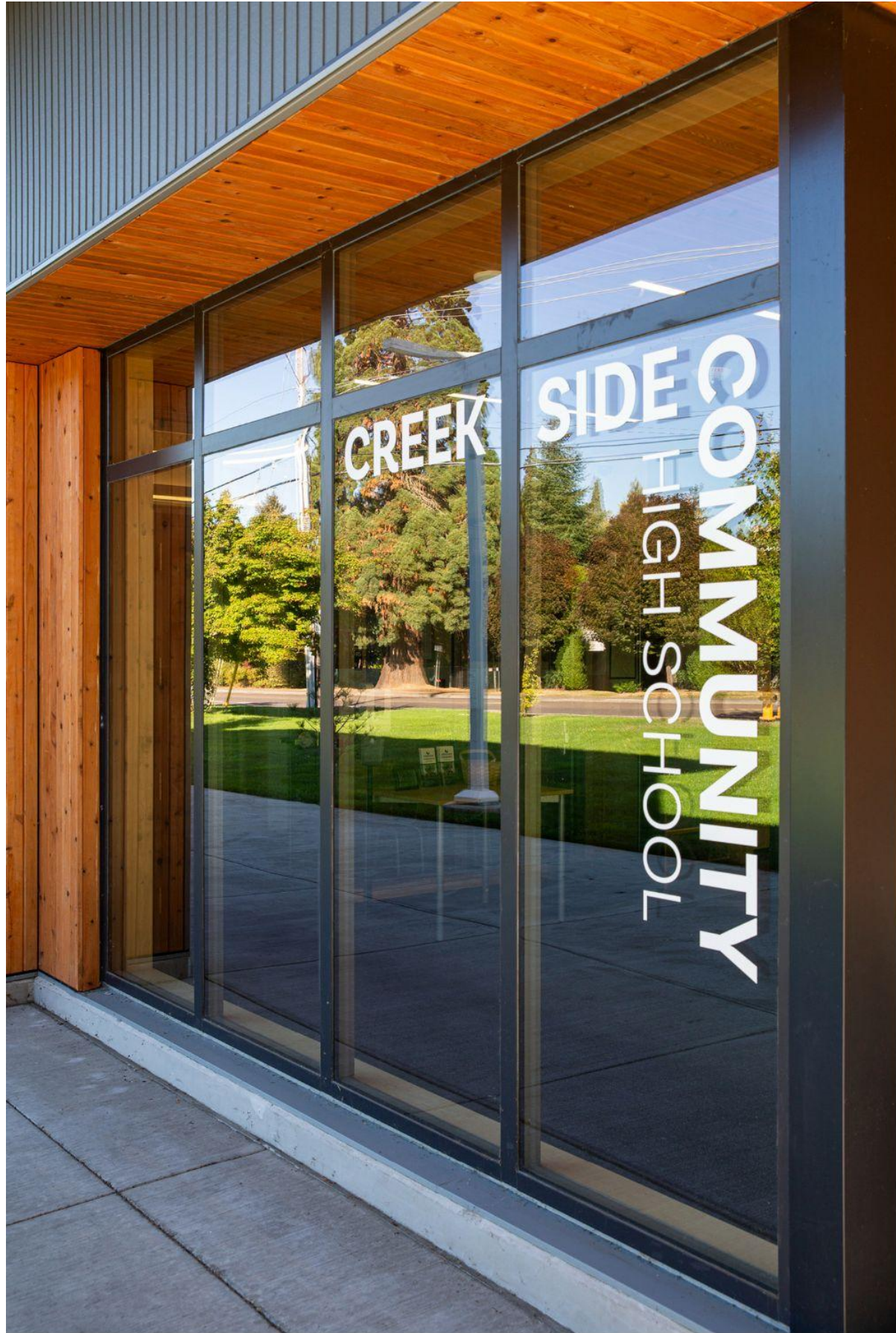


“ We create caring community **with our students** and support each other with love and flexibility — **partnering in learning** to grow strong in courageous hope, compassionate wisdom, and inspired action.”

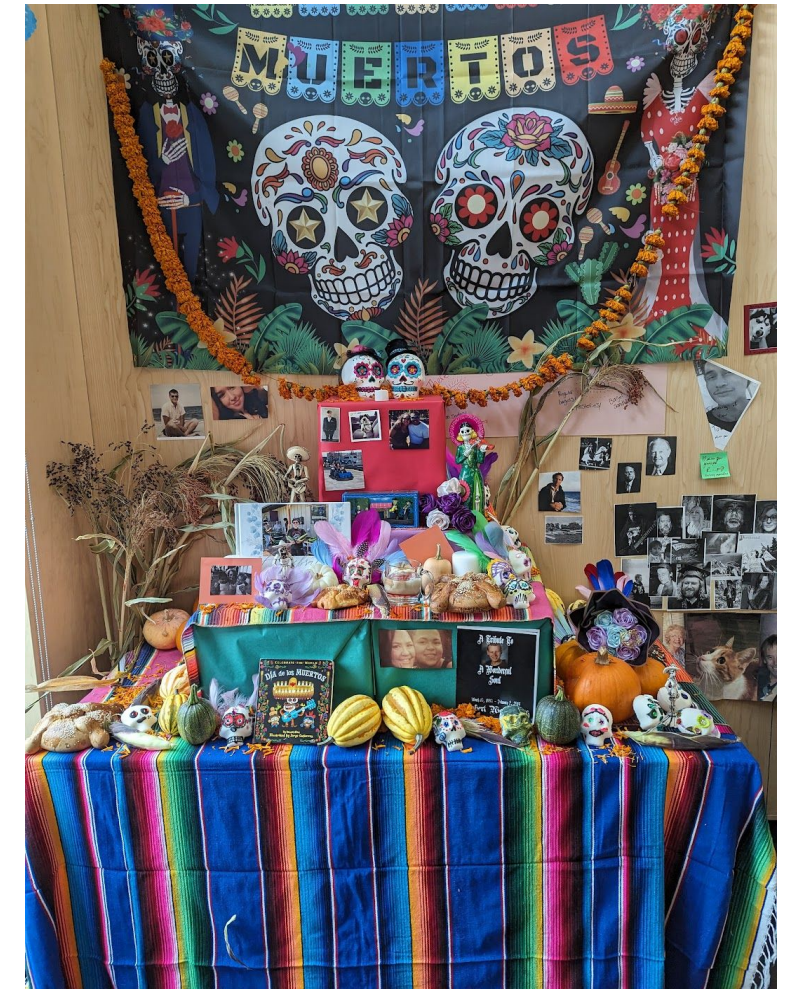
–Creekside Mission

















## Essentials for Community School Transformation



# Community School Partnership Approach



A hands on approach

*SupaFresh*  
YOUTH FARM



















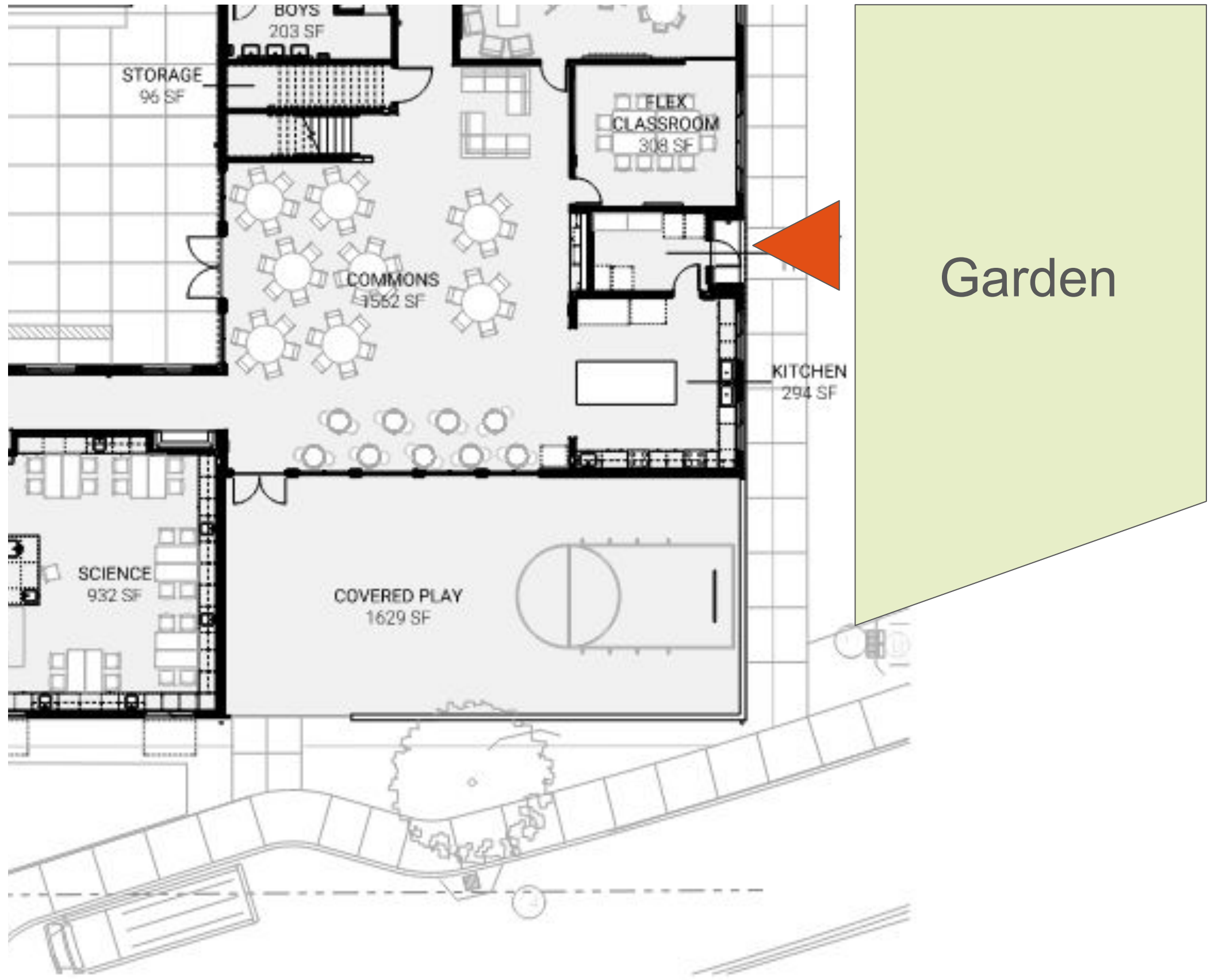






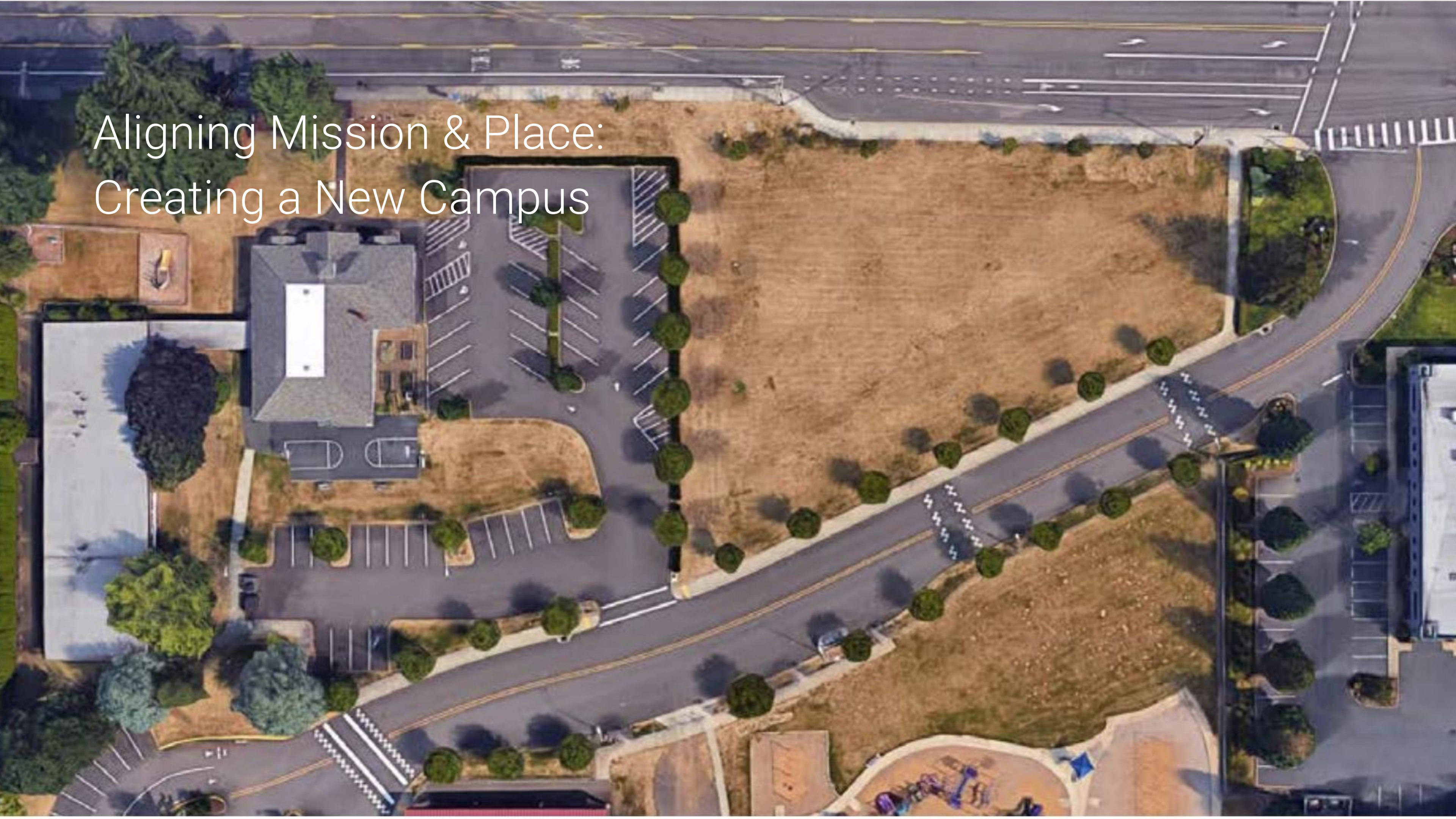








Aligning Mission & Place:  
Creating a New Campus

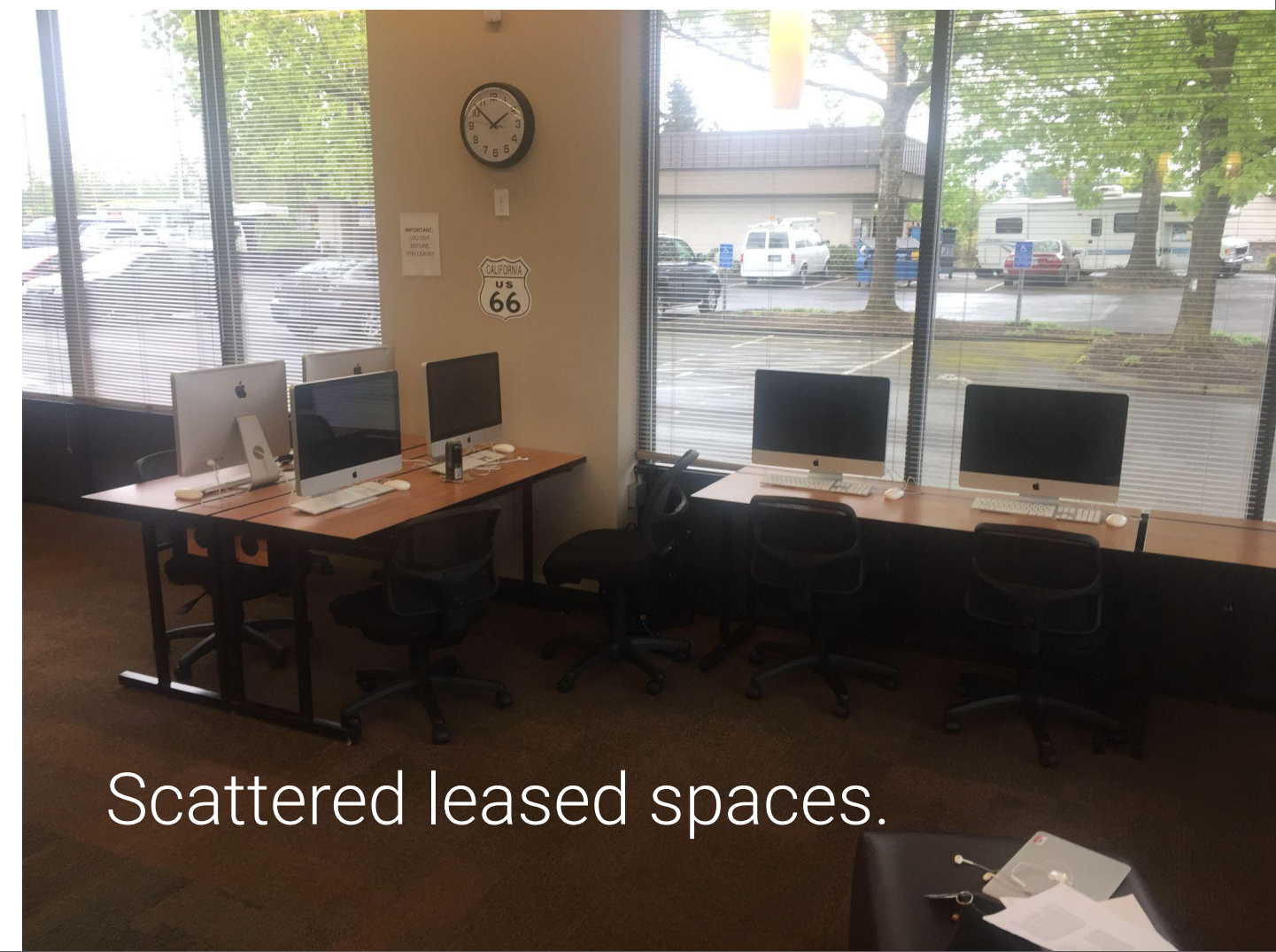




Existing Facilities

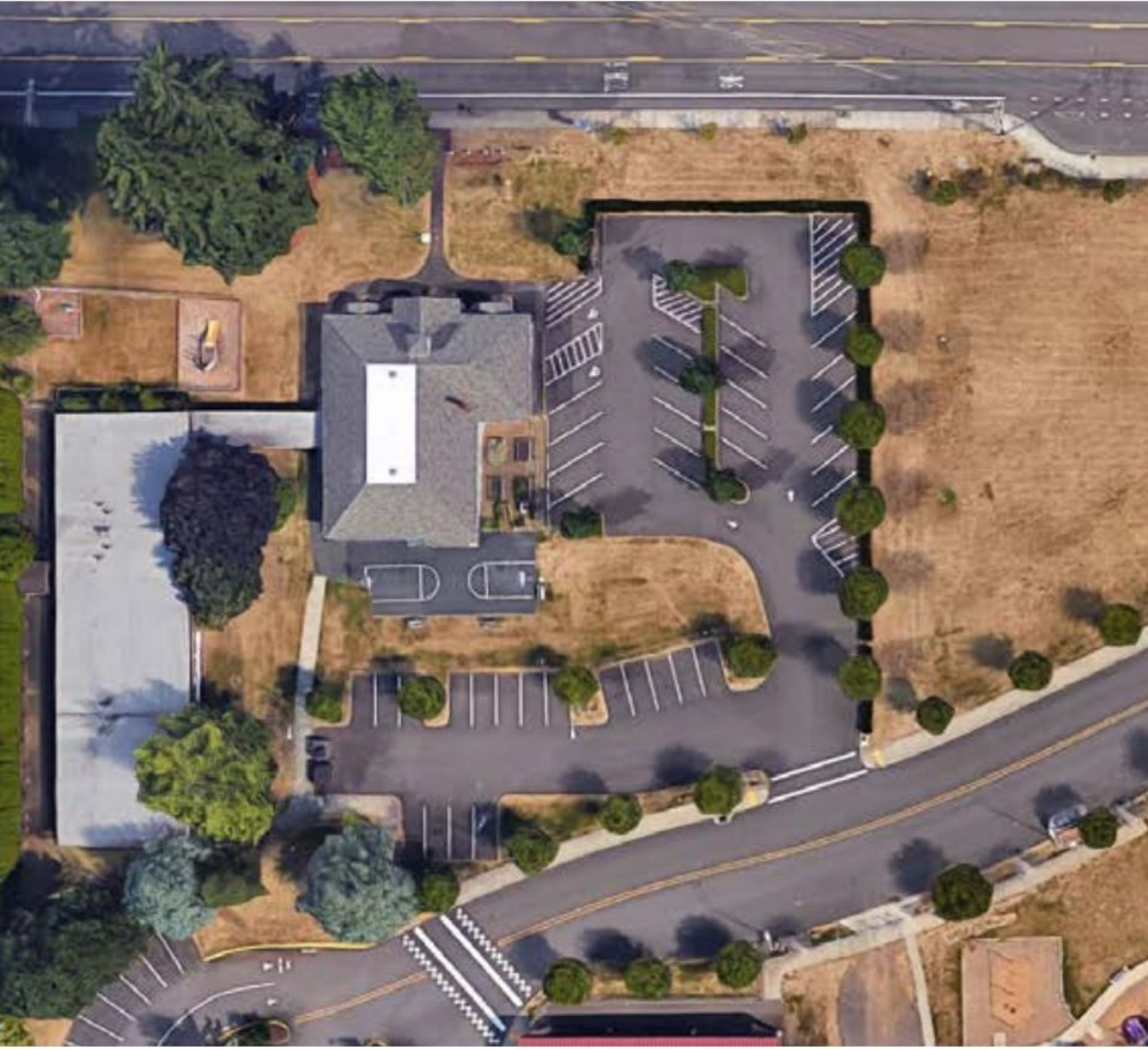


A very old schoolhouse.



Scattered leased spaces.





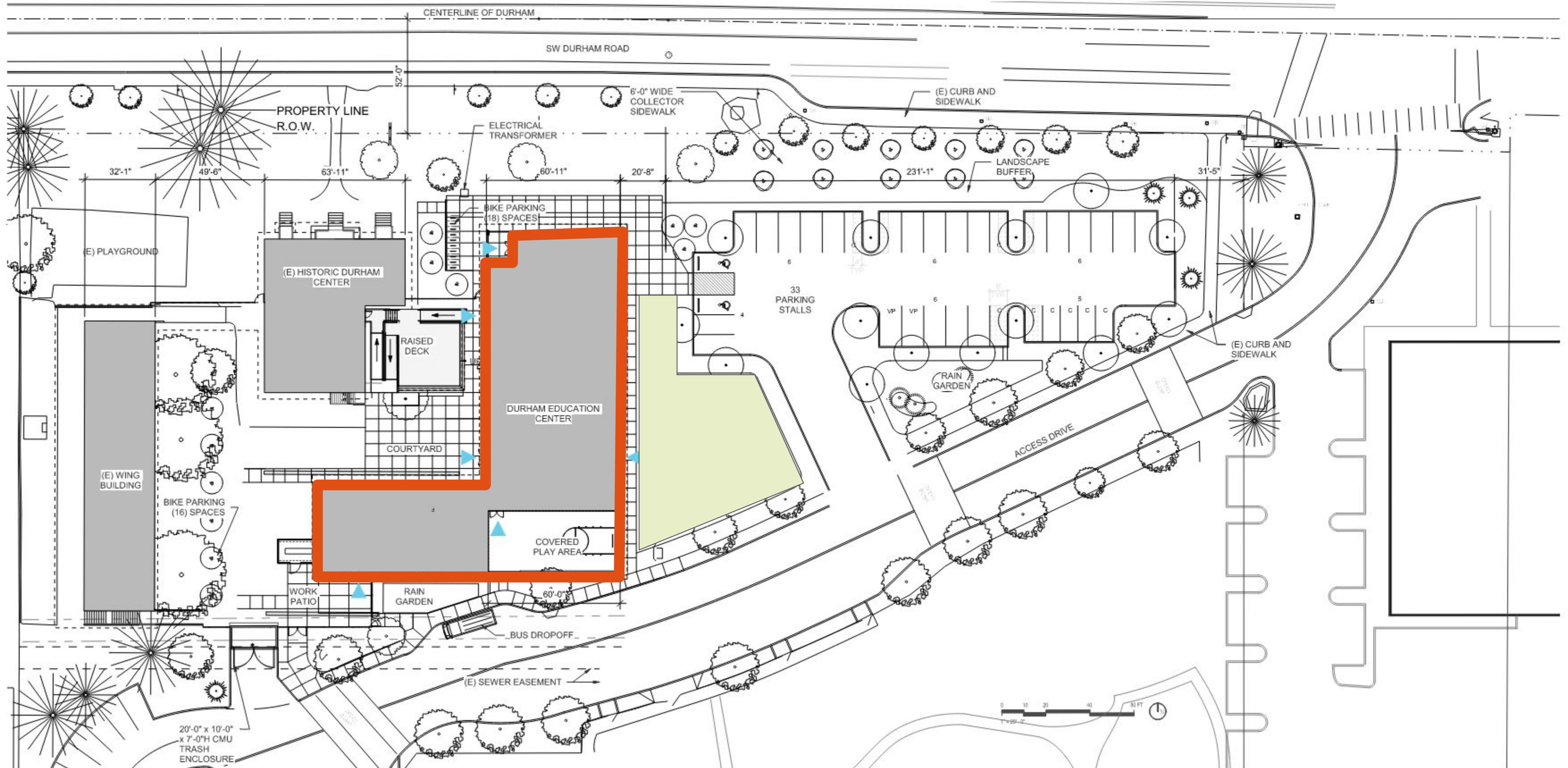
# Goals

Consolidate programs on one campus.

Enhance the mission.



# Campus Plan

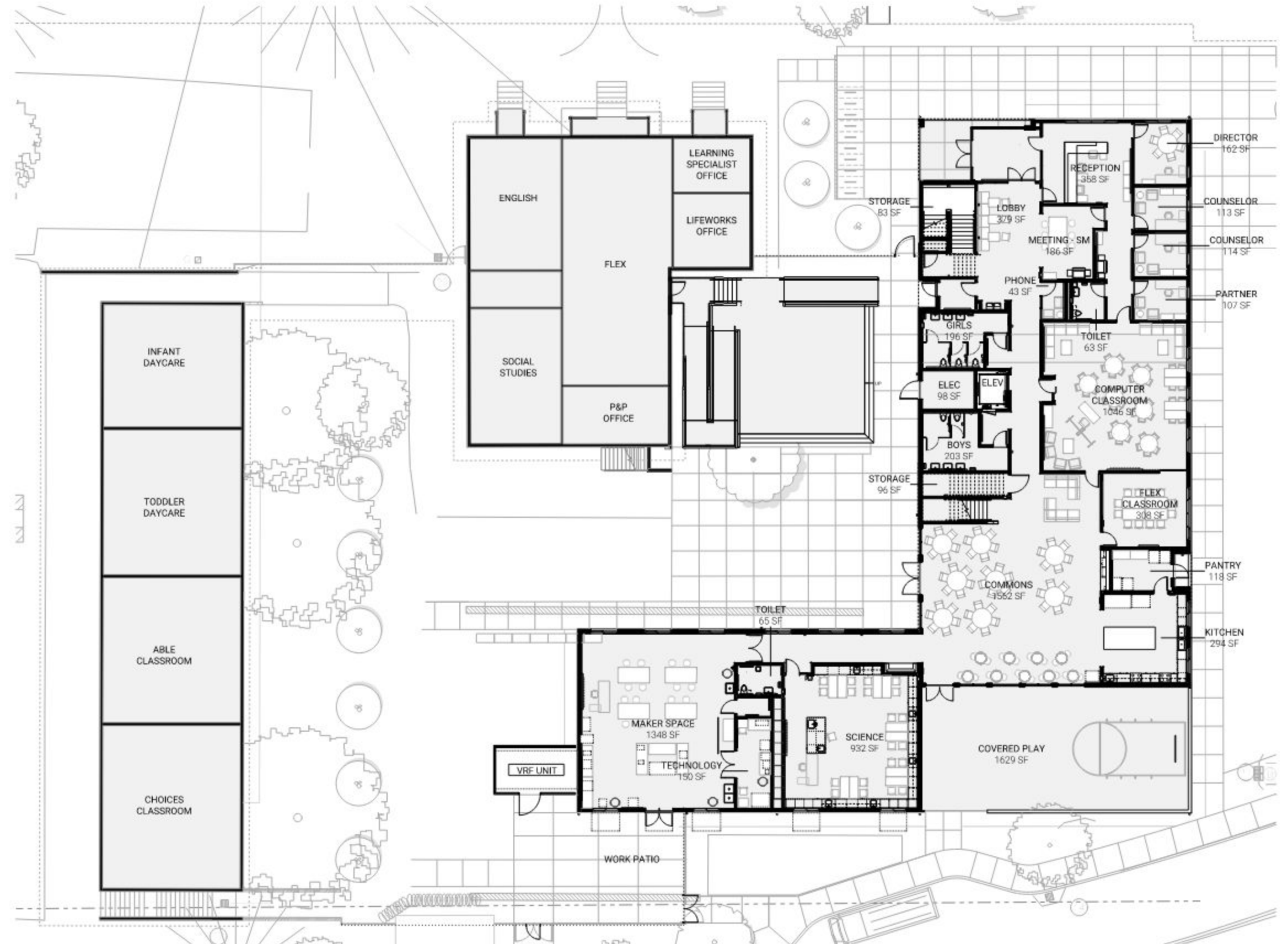




# First Floor Plan

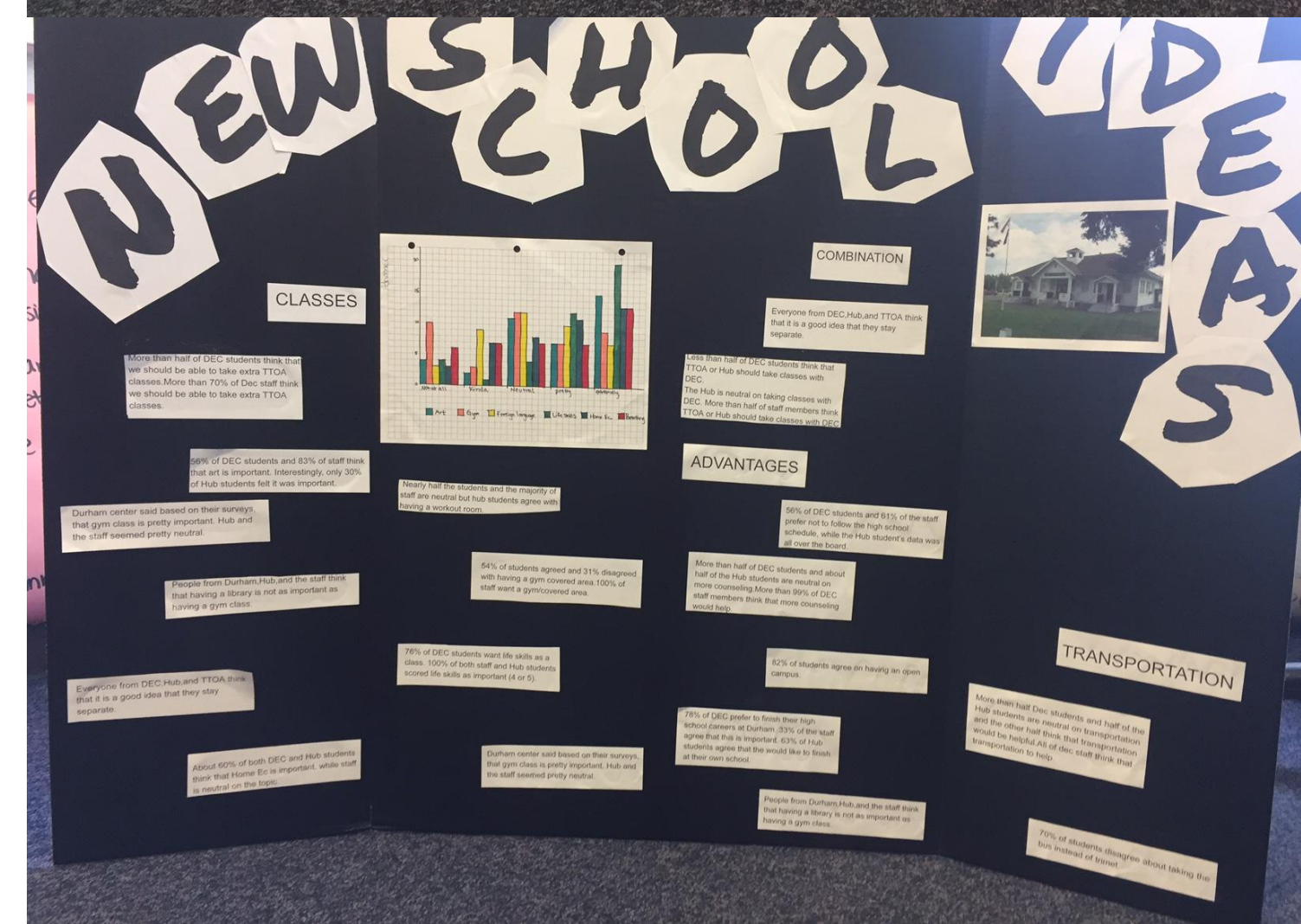
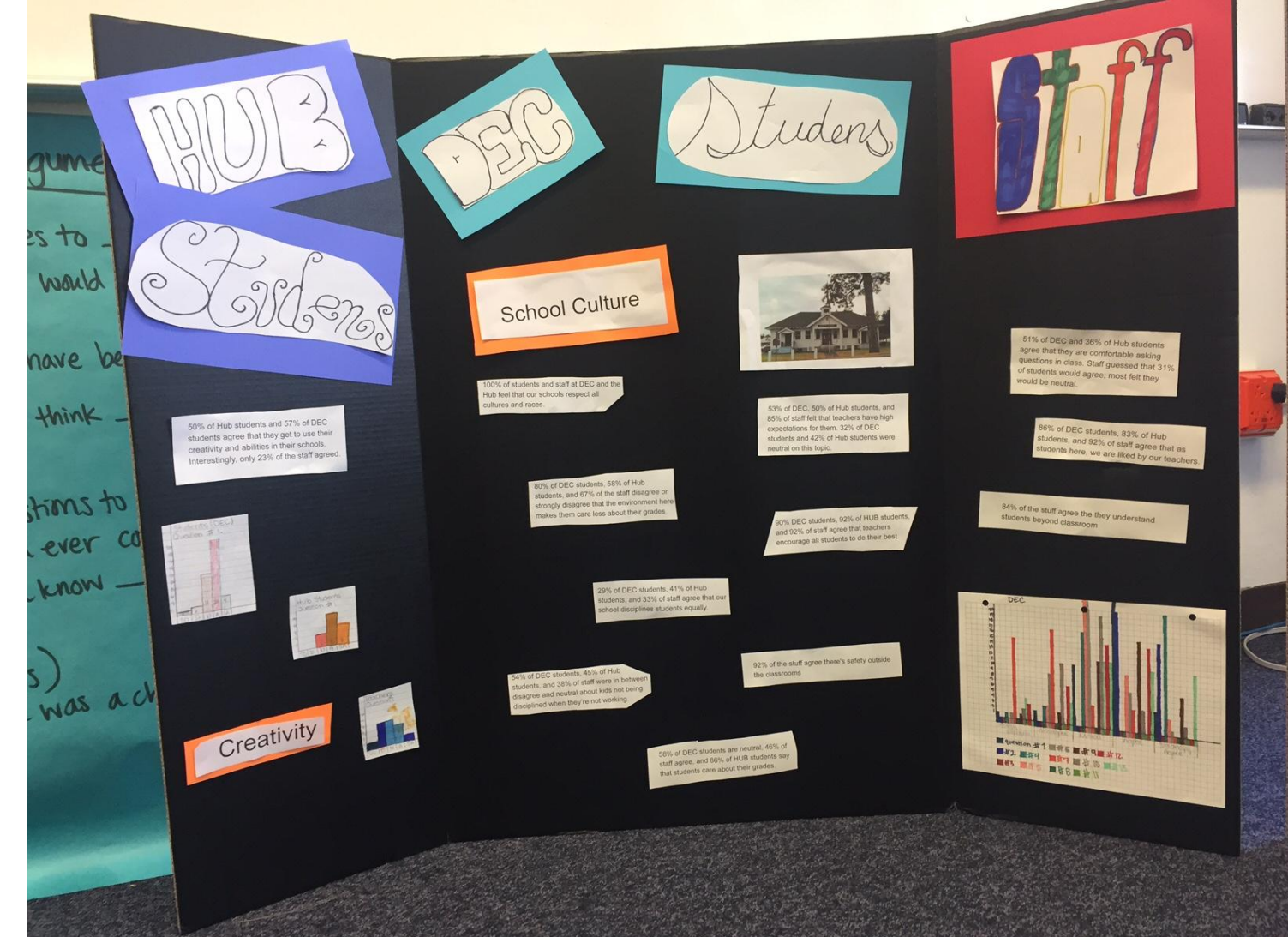
## NEW CLASSROOM BUILDING

First Floor	10,771 SQFT
Second Floor	4,268 SQFT
<b>Total</b>	<b>15,039 SQFT</b>





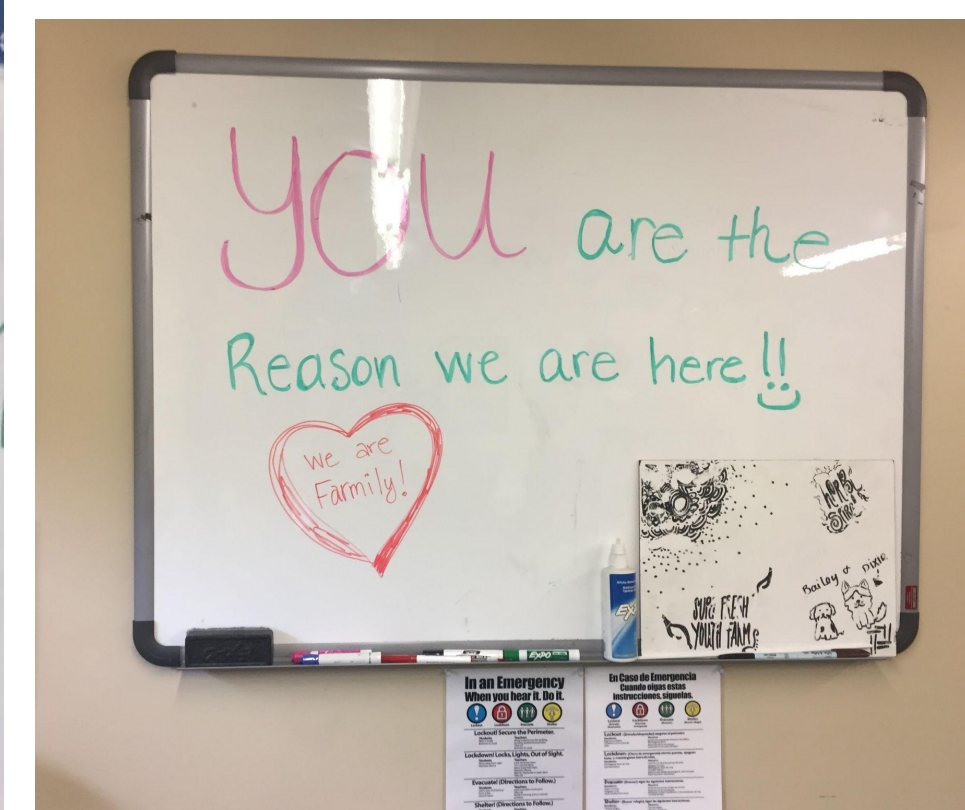
“... this building **shouldn't** look or feel anything like a regular school.”







Various Partner Spaces Before





# Interior Character

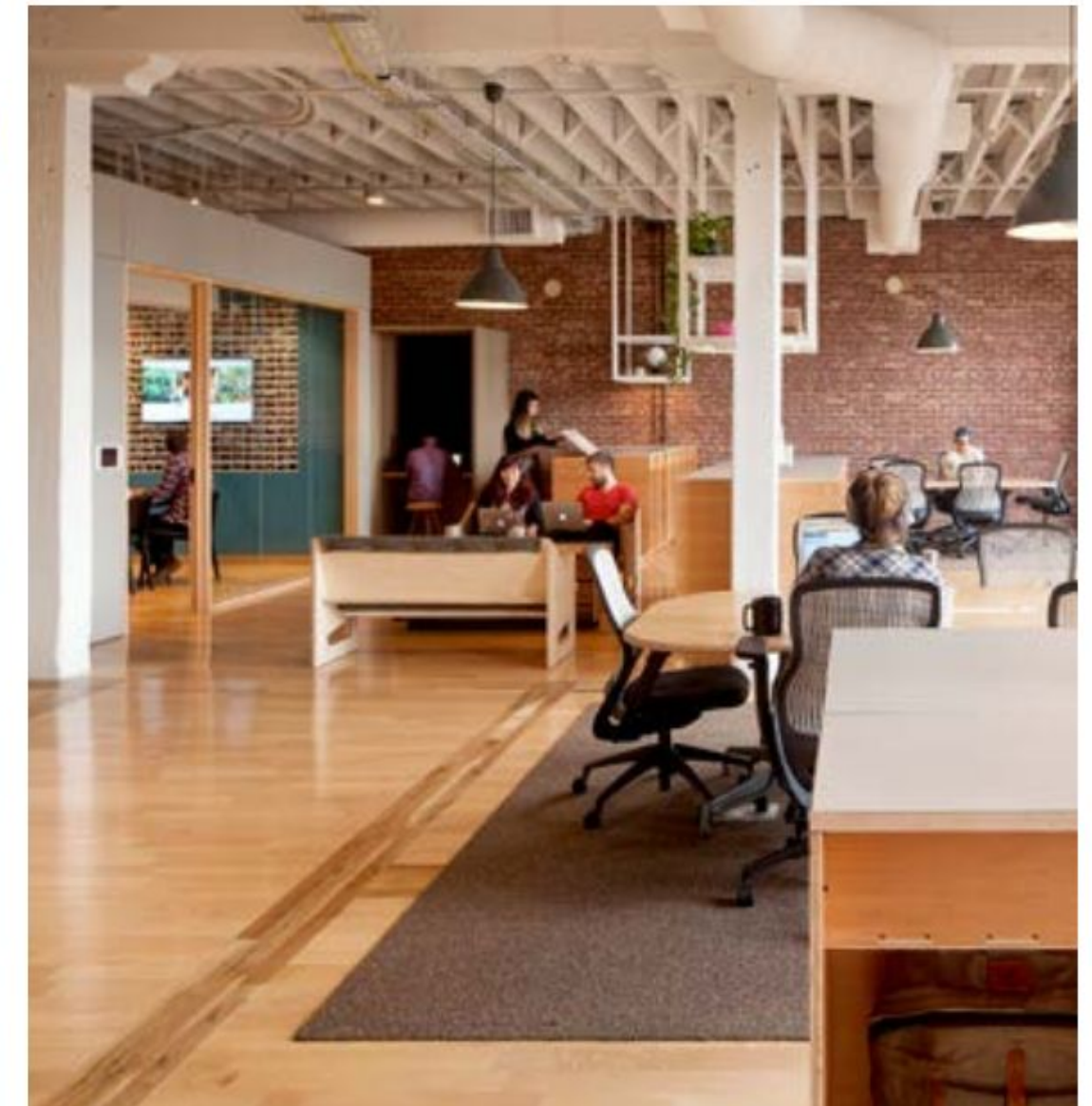
## Residential



## Cozy Cafe



## Tech Startup







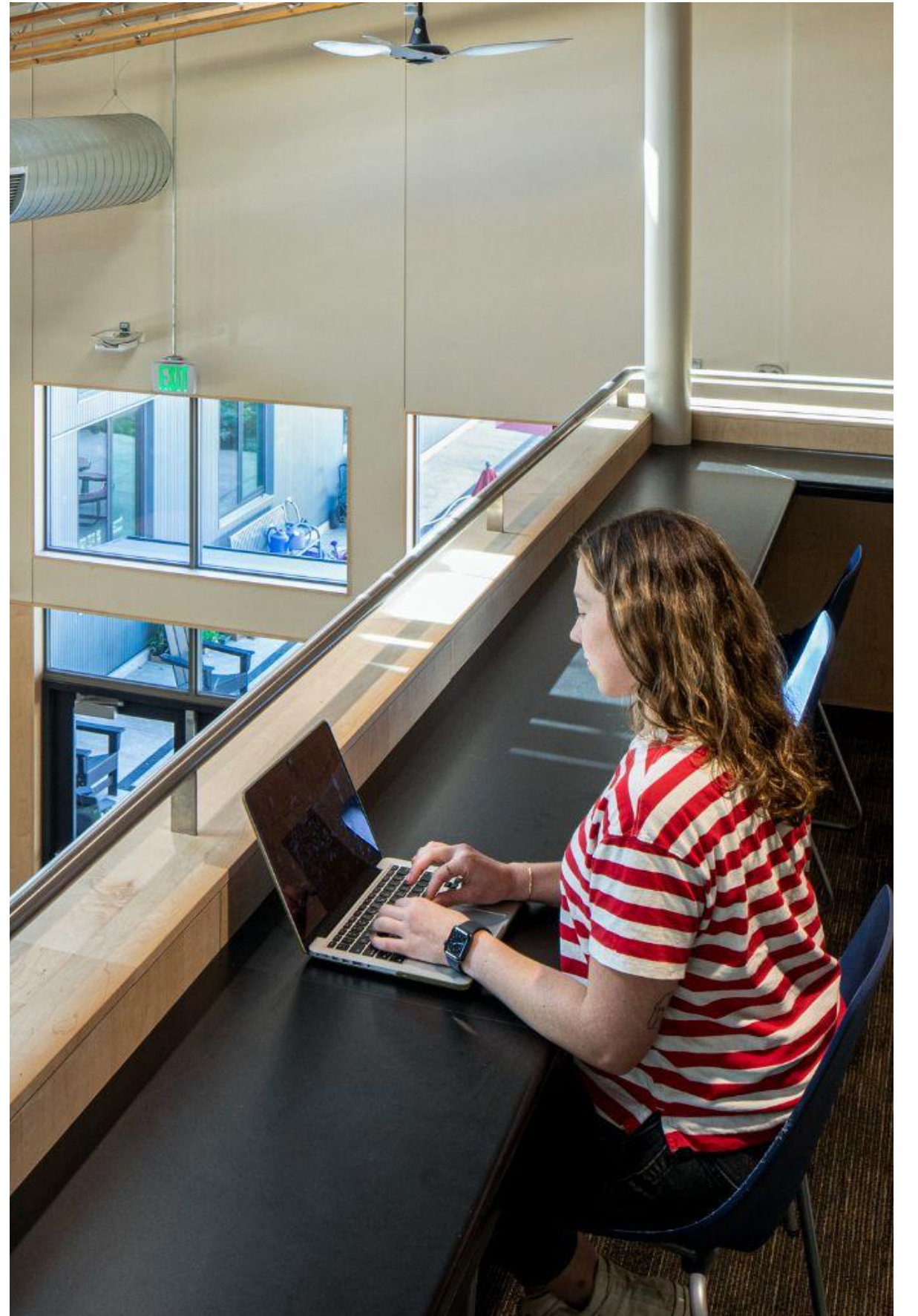


“A space that is not too precious, encourages hands on activities and making.”

—Student

















“ Supports cultural traditions like our Coffee Station...”

-Staff



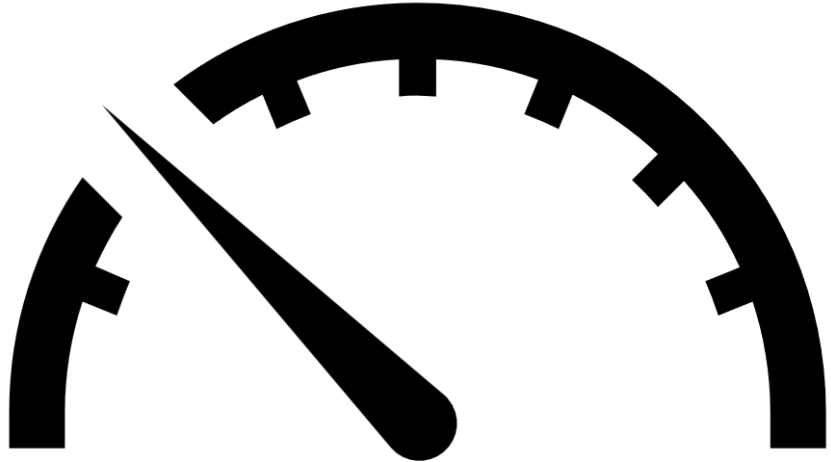


# Why Net Zero matter's to Creekside Community High School?



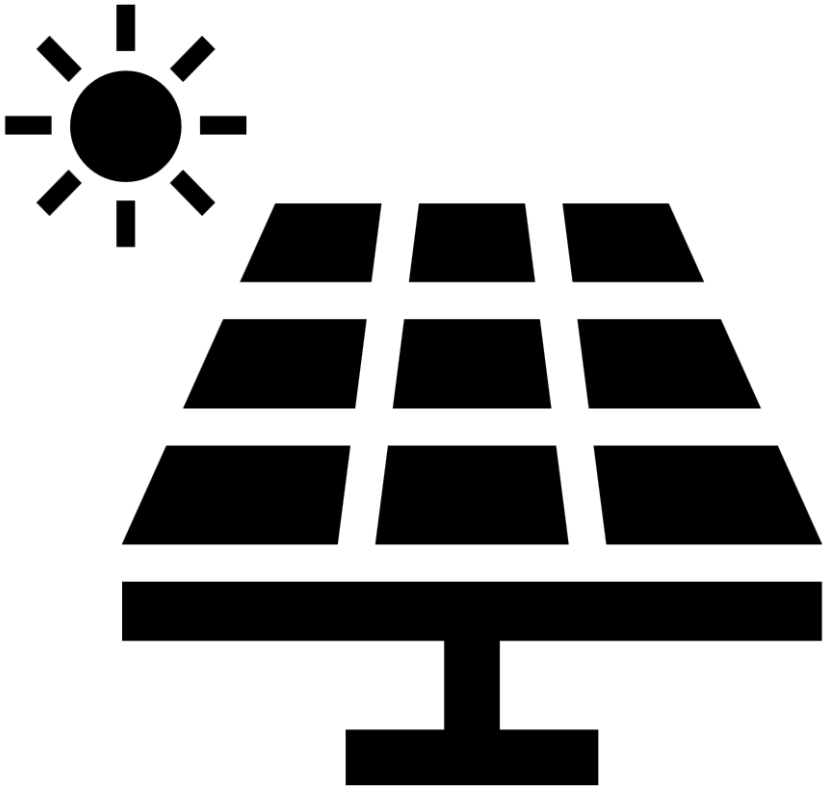


# Net Zero Energy



Reduced Energy Use

-



Solar Generation

=

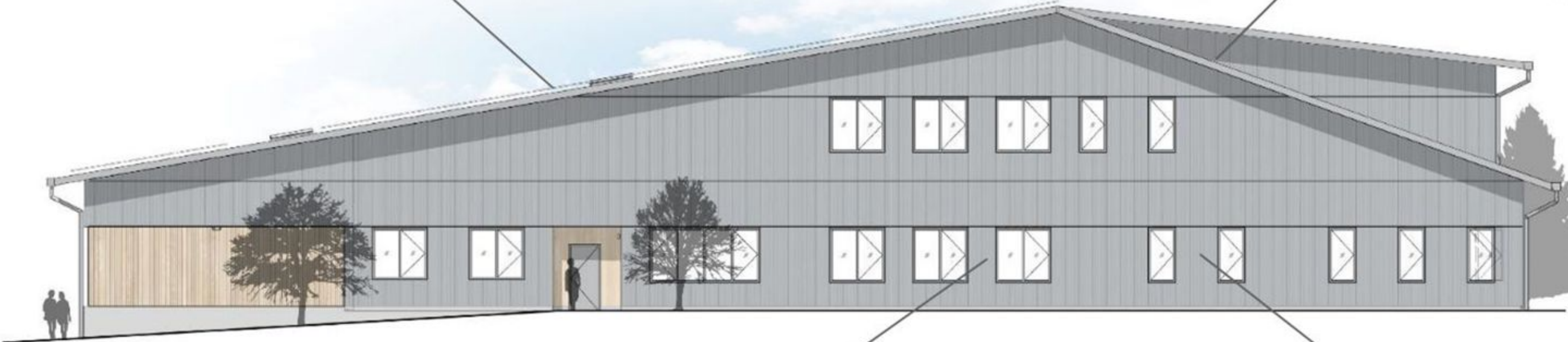
**ZERO**



# Energy Reduction

131.6kW PV (South facing)  
Roof U-0.048 (30%)

Focus on tight envelope  
0.109 cfm/sf @ 75PA

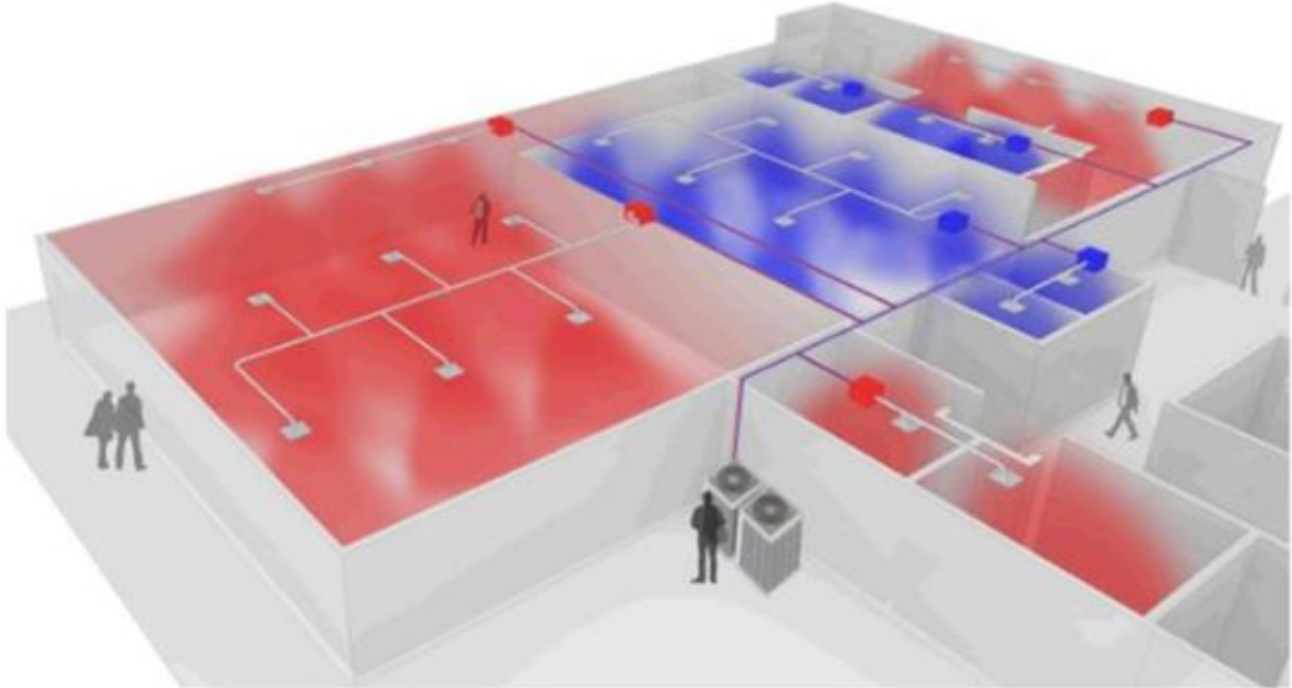


Window to Wall Ratio - 18% (40%)  
Window U-0.29, SHGC-0.27 (30%)  
Wall U-0.039 (40%)

Operable windows  
Accountability required



# Energy Reduction - Building Systems



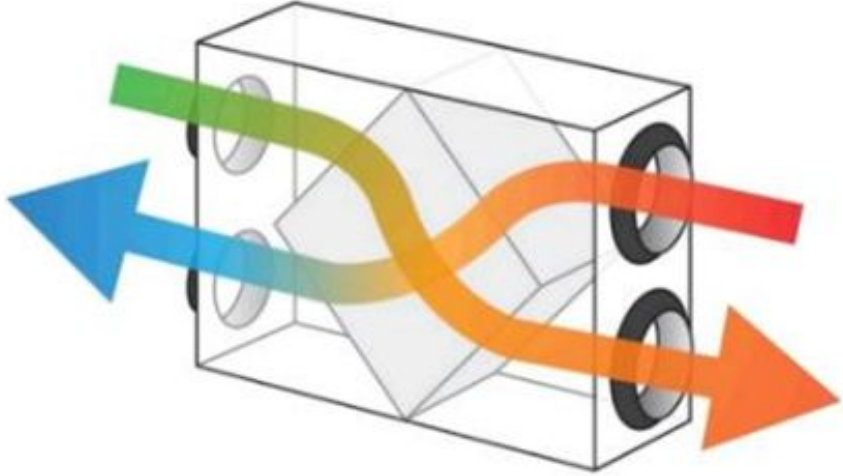
VRF w/ heat recovery



operable windows



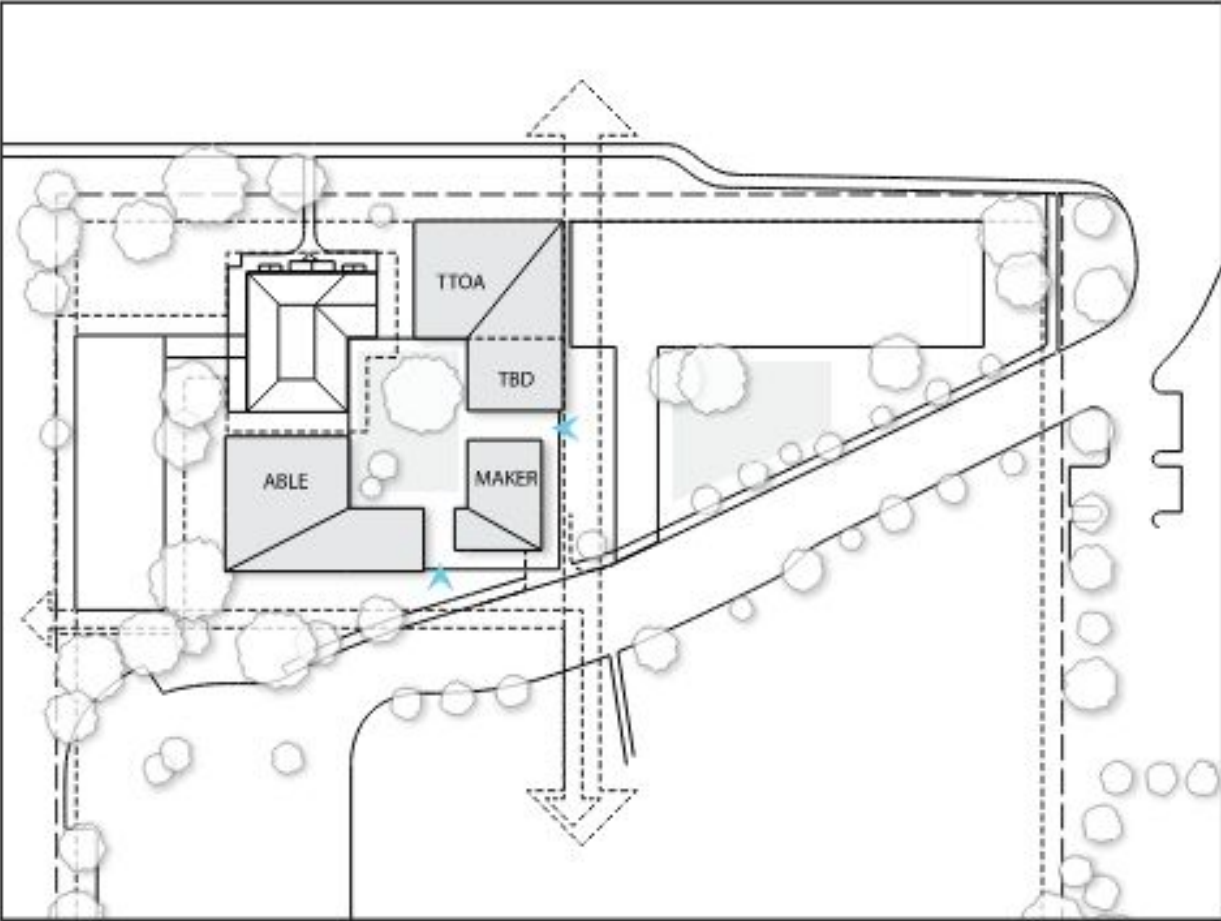
ceiling fans



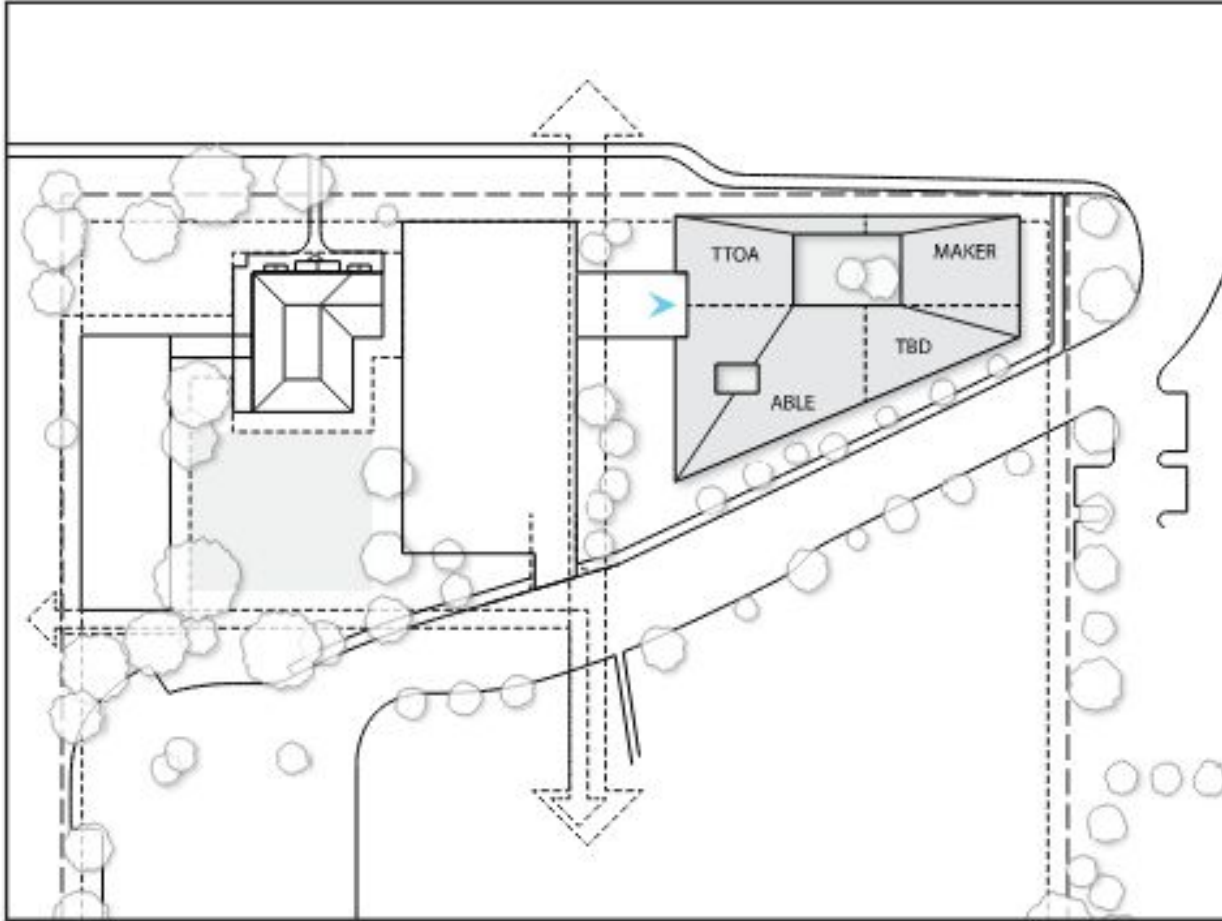
heat recovery ventilators



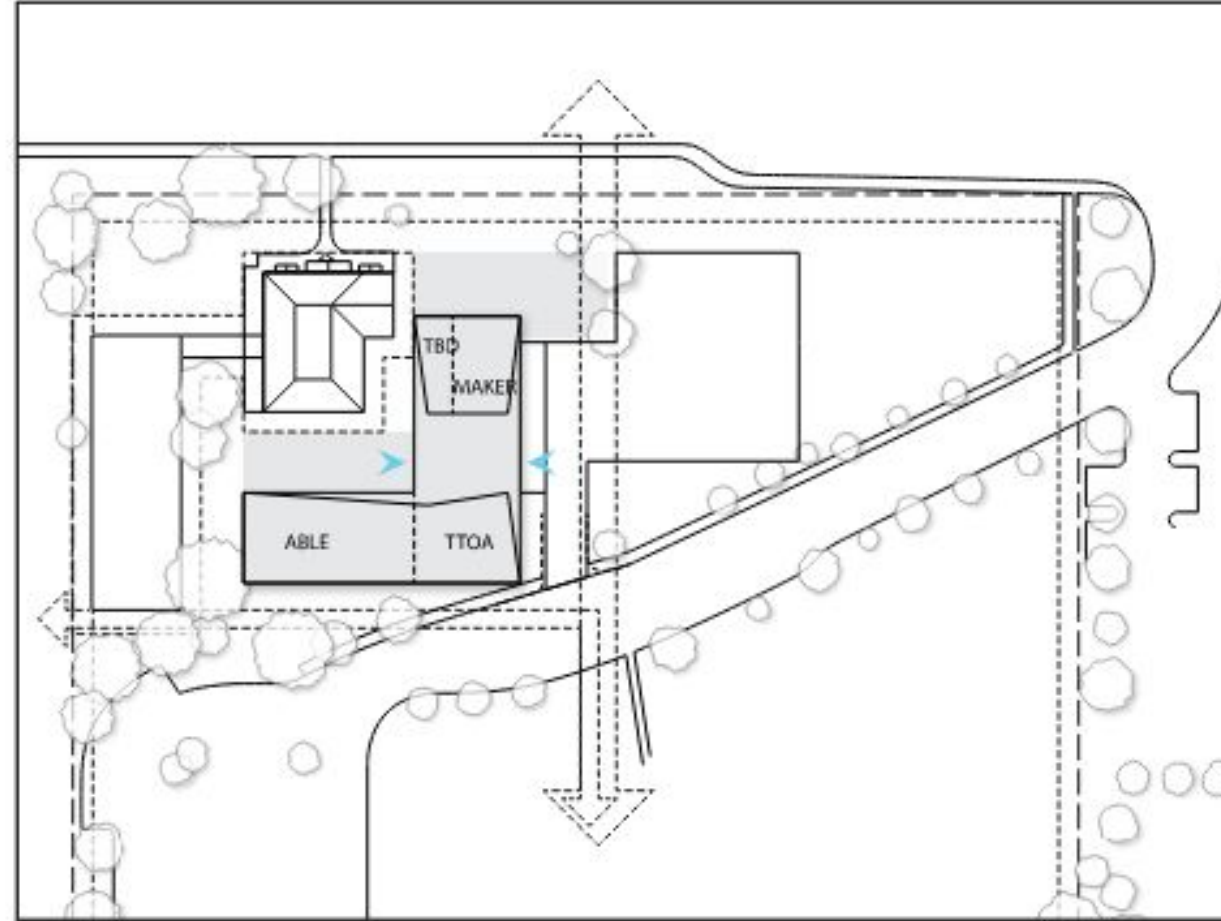
# Energy Generation: Building Shape



Option A



Option B



Option C



# Energy Generation



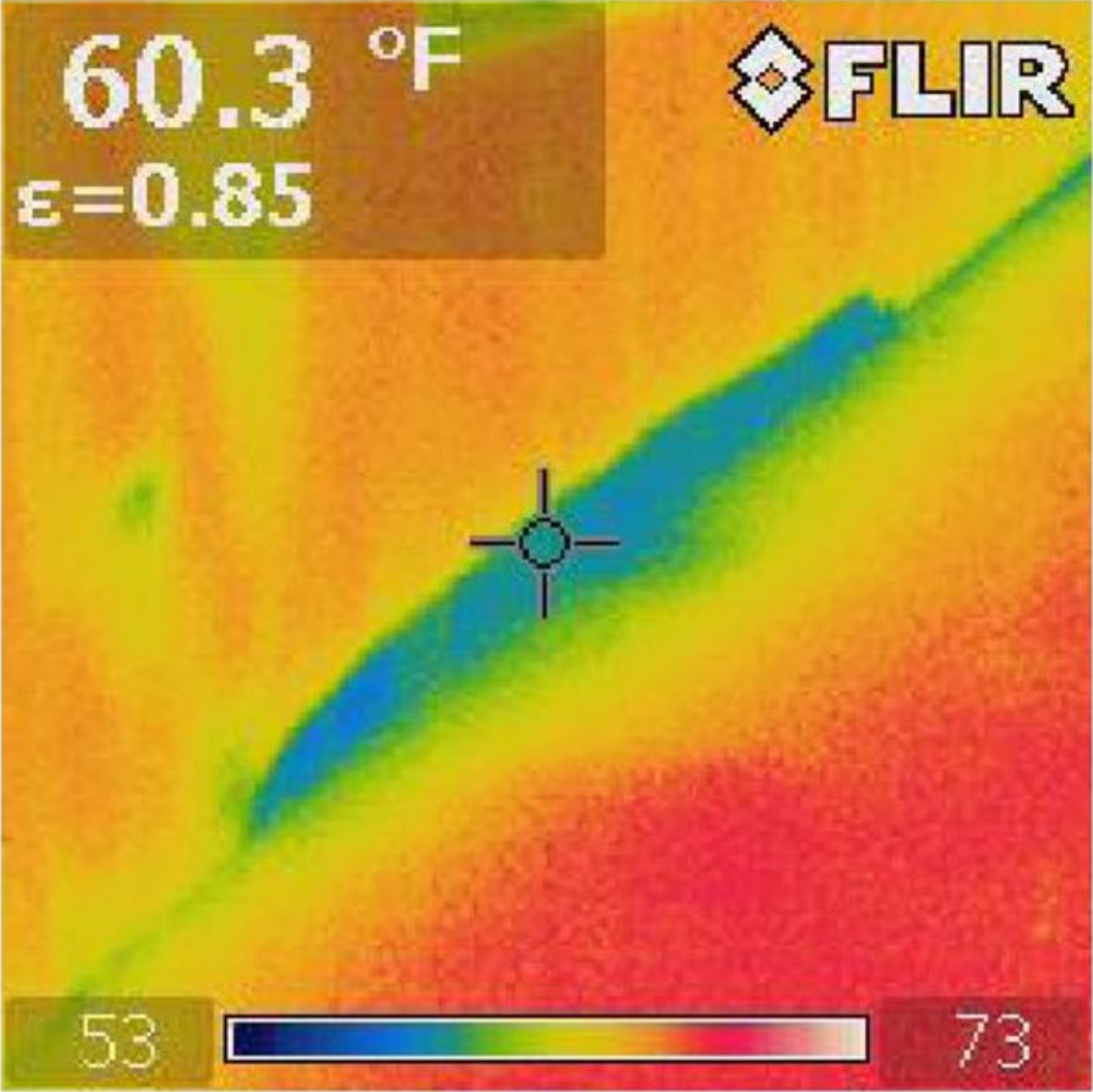


# Follow-Through: Mock-up Testing





# Follow-Through: Thermal Imaging





# Outcomes & Metrics





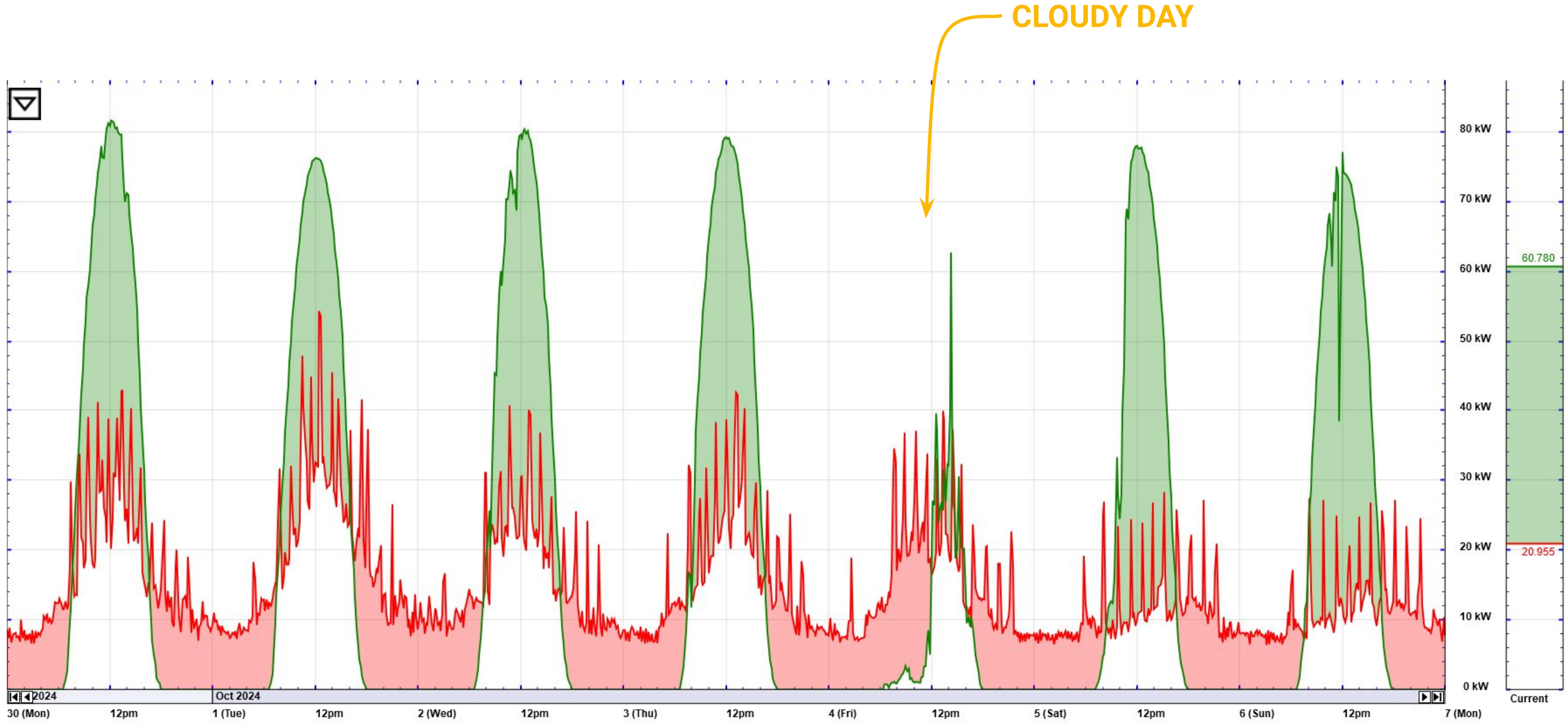
Net positive  
energy for over  
five years.

Used:	644 MWh
Generated:	792 MWh
Net:	148 MWh sold



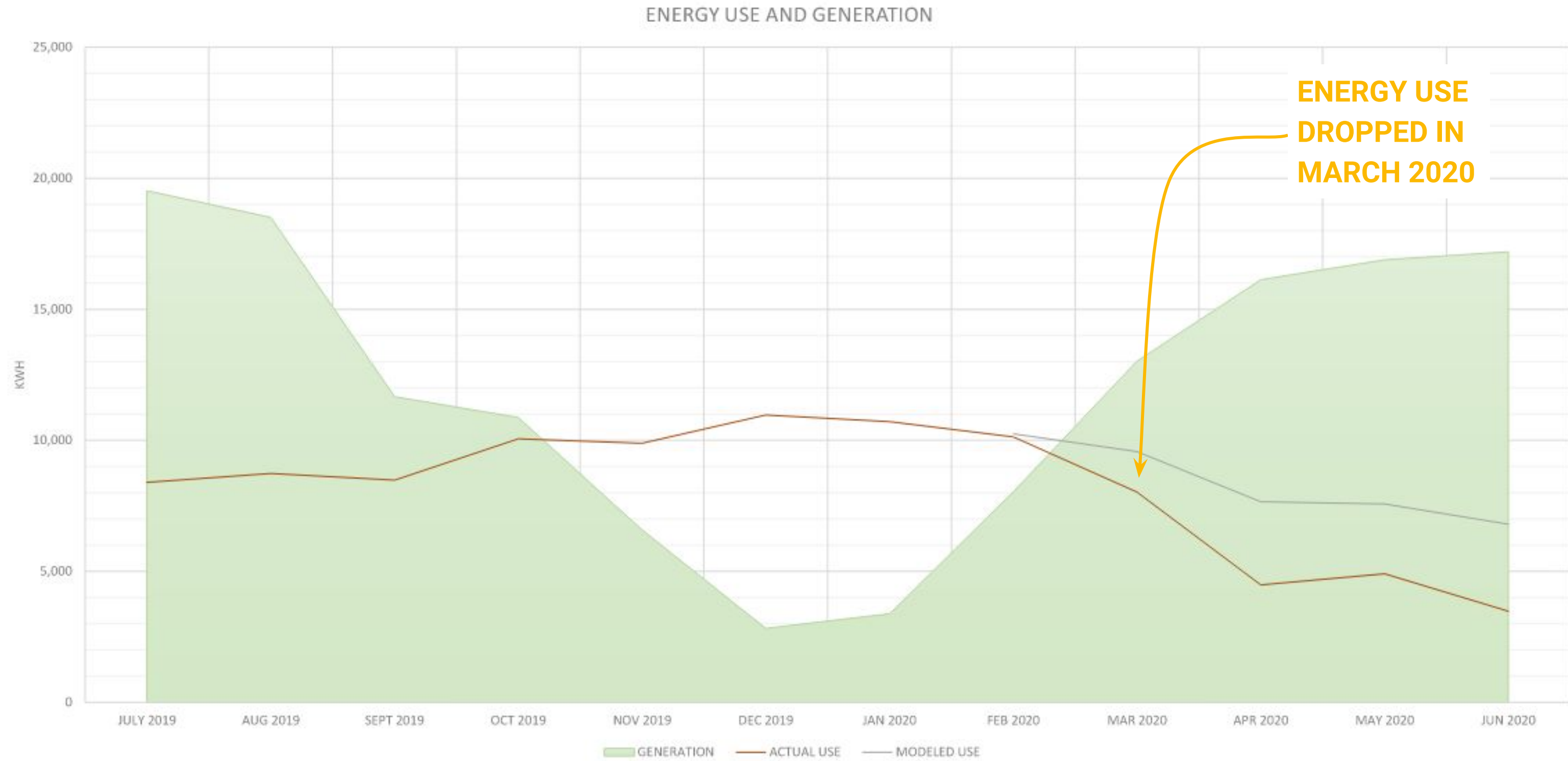


# One Week of Energy Use and Generation





# The First Year





# Student Outcomes

## Earning Credit at an On-Track Rate

	All Students	9th Graders	Attendance
<b>2019-2020</b>	55%	N/A	65%
<b>2021-2022</b>	67%	83%	65%
<b>2022-2023</b>	79%	77%	69%
<b>2023-2024</b>	<b>86%</b>	<b>93%</b>	<b>72%</b>

	2023-2024
<b>Historically Underserved</b>	86%
<b>Not Historically Underserved</b>	89%
<b>Ever EL</b>	83%
<b>Active EL</b>	92%
<b>SPED</b>	80%
<b>Not SPED</b>	88%







Additional opportunities

Cross pollination

Community Hub

Community connection

Third space





















Q+A



Thank you!

