

Adding rigor, relevance, and value to CTE instruction through WBL experiences in commercial construction:

The Adult Education Center at Regency



Speakers



Beverly Cocke

Admin Coordinator of
Workforce Development

Henrico County Public Schools

blcocke@henrico.k12.va.us



Mac Beaton

Director of Workforce &
Career Development

Henrico County Public
Schools

mrbeaton@henrico.k12.va.us



Susan Moore

Director of Facilities

Henrico County Public Schools

smoore@henrico.k12.va.us



Schools and Centers

Elementary.....	46
Middle.....	12
High.....	9
ACE Centers.....	3
Alternative Programs.....	3
Henrico Virtual Academy.....	1
Total Schools and Centers.....	74

Students

Elementary.....	21,664
Middle.....	11,070
High.....	15,656
Other.....	559
Total Students.....	48,949

2023 Graduates

Total Graduates.....	3,840
On-Time Graduation Rate.....	90.7%
CTE on-Time Graduation Rate.....	98.9%
Continuing Education.....	77%

Student Diversity

African American.....	35%
Asian.....	14%
Caucasian.....	33%
Hispanic.....	13%
Multiple Races.....	5%
Other.....	4%

Economically Disadvantaged.....48%

Number of Languages Spoken.....139

A little about Henrico County Public Schools



Make sure every student knows their **WHY!**

- In Henrico County, every student will graduate:
 - Enrolled
 - Enlisted

AND/OR

- Employed



Opportunity #1:
How do we reach our
adult learners
differently and provide
additional services to
support their career
success?



—
Changing the way
we meet the needs
of our adult
learners...



- ❑ More than just a G.E.D
- ❑ Make it convenient for the learner
- ❑ Change the “feel” by changing the environment
- ❑ Exposure to the opportunities by “Selling you a future!”
- ❑ “Big Picture” thinking

WHAT NEXT?

The answer to the question is right in front of you!



- ❑ Once you earn your GED, what do you do next?
- ❑ What skills/tasks will I have to know?
- ❑ What job opportunities are available?
- ❑ How can I afford this?

Opportunity #2:
How can we turn this
into a work-based
learning experience
for our CTE Students?



Handshake, Not a Handout

- Offer students WBL experiences typically not available
- Offer trade industry partners opportunities to develop a talent pipeline



DEMO



DELIVERY



DESIGN



The Adult Education Center at Regency:



The Challenges:

Adult Education Center at Regency



Obstacles are
Opportunities in disguise.

Deepak Chopra

quotezany

Embrace the Challenges

- Get Stakeholder Buy-in  Helping others see the vision of “selling your future” at the new Adult Education Center
- Funding  Business partners stepping up to provide support
- Timeframe  Deadlines must be met to ensure smooth transition of Adult Education programs
- WBL Experience  Instructors and students learned on-site from business partners
- Supervision  Hired a Project Manager to oversee the details of the project

The Power of Business Partnerships:



Partnering with
Henrico County
Building Inspectors

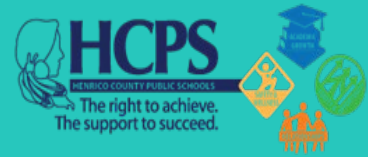
The Power of Business Partnerships:

“Grow Your Own” – Planting seeds and relationships



The Power of Business Partnerships:

- ❑ Morale Booster
- ❑ Mentoring Experience
- ❑ Feeling a part of the Educational community
- ❑ Recruiting in both CTE and Adult Ed worlds
- ❑ Internships & Job Shadowing WBL experiences



The Power of Business Partnerships:

American Fire Sprinkler Association



The Rewards:

Work-based Learning:



For Businesses:

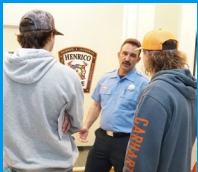
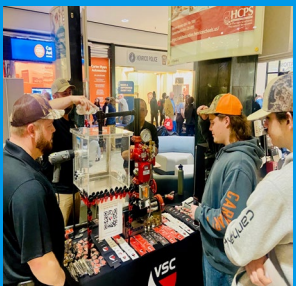
- ❑ Connect with students
- ❑ Share industry knowledge
- ❑ Boost employee morale
- ❑ Community recognition
- ❑ Develop talent pipeline

The Rewards:

Lifelong Learning:

For Adult Learners:

- ❑ Classes
- ❑ Tutoring
- ❑ Career Fairs
- ❑ Community Expos
- ❑ Area Workforce Events



The Rewards:

Shopping for your future



Taking the Experience Further ...



QUINN EVANS ACE CENTER AT HERMITAGE
Henrico County Public Schools Advanced Career Education

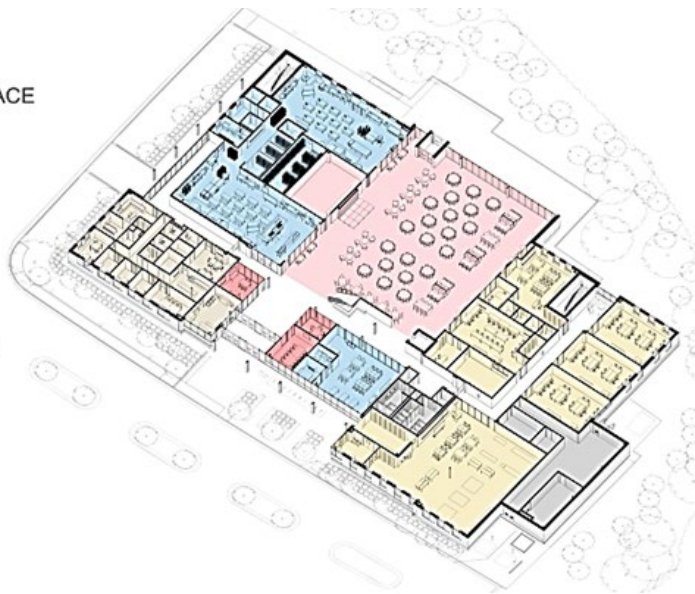
September 7, 2022
quinnevans.com

- 37,000 SF of shell space that the CTE trade programs will complete
- More WBL opportunities for community partnerships during build-out



FLOOR PLAN

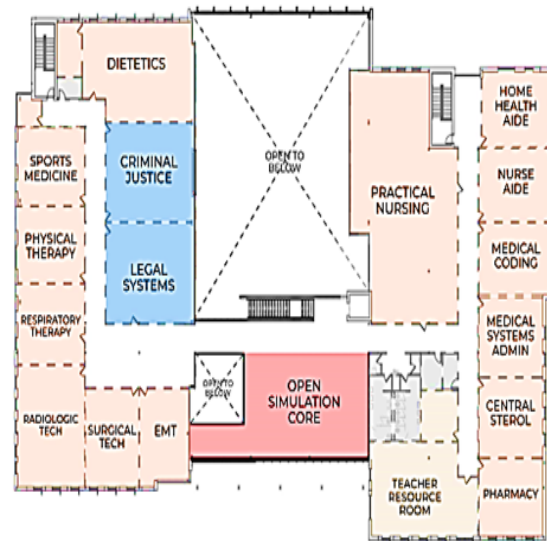
NEW HERMITAGE ACE



- ASSEMBLY & COLLABORATION
- HOSPITALITY & TOURISM
- ARTS & COMMUNICATION
- HEALTH SCIENCES
- ENTREPRENEURSHIP
- ADMINISTRATION
- SUPPORT

FUTURE HEALTH SCIENCES

SECOND FLOOR SHELL SPACE



- HEALTH SCIENCES
- ENTREPRENEURSHIP
- HUMAN SERVICES
- ADMINISTRATION
- SUPPORT





THANK YOU!

