



ALL-IN-ONE SCHOOL DESIGN

Uniting and Differentiating Combined Elementary and Senior High Schools

Who We Are



JEFF MOROZ
ARCHITECT
BC, OPERATIONS LEAD, STANTEC WINNIPEG



KRISTIN SIDORYK
SENIOR INTERIOR DESIGNER
STANTEC WINNIPEG





Lake St. Martin First Nation School

Agenda

- 1** ONE SCHOOL
KINDERGARTEN TO GRADE 12 VERSUS
MULTIPLE SCHOOLS ON ONE CAMPUS
- 2** METHODS FOR SUCCESS
- 3** CASE STUDIES
- 4** CONCLUSION AND QUESTIONS

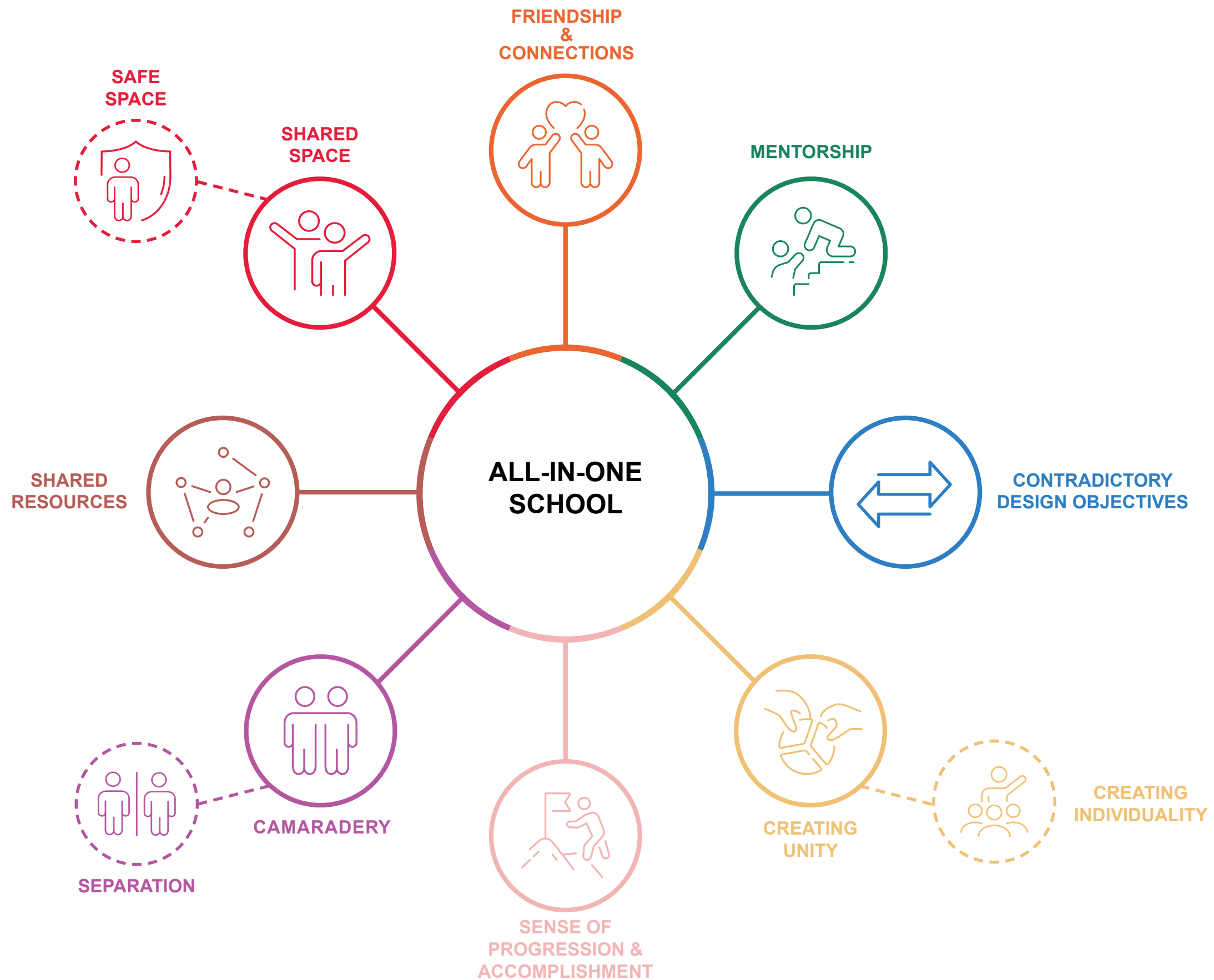


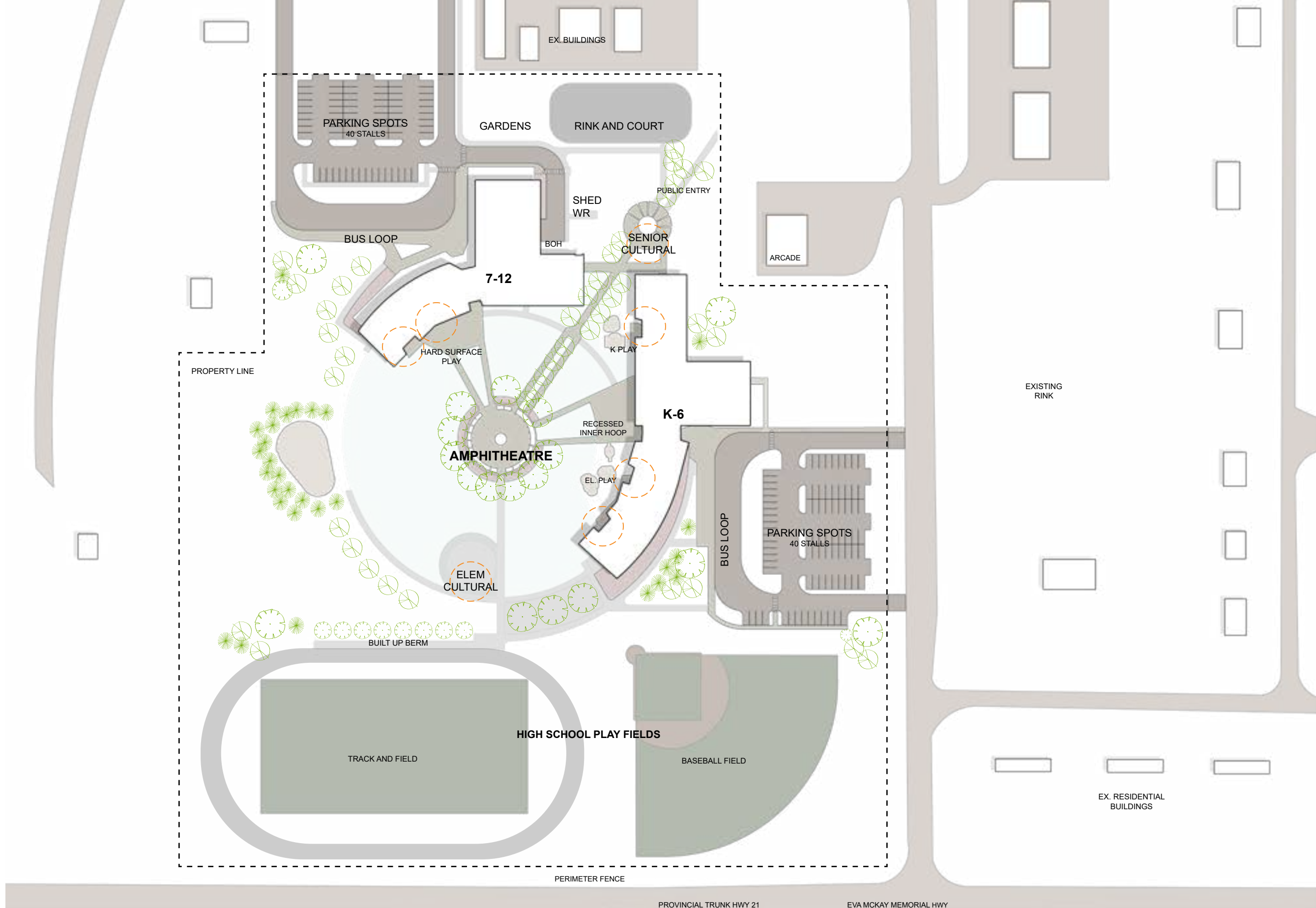
1

ONE SCHOOL

*Kindergarten to Grade 12 versus
Multiple Schools on One Campus*









SHARED ENTRY



SEPARATE ENTRIES



**SHARED
GATHERING
SPACES**





EARLY YEARS



SHARED SPACES



MIDDLE/SR YEARS





EARLY YRS WC IN CLASSROOM

**CORRIDOR
BREAKOUT SPACE**



OLDER AGE WC'S



2 HOW TO ACHIEVE SUCCESS





ACOUSTIC COMFORT



FLEXIBILITY



CONNECTION AND AGENCY



MULTIPURPOSE SPACES





MULTI-FUNCTION



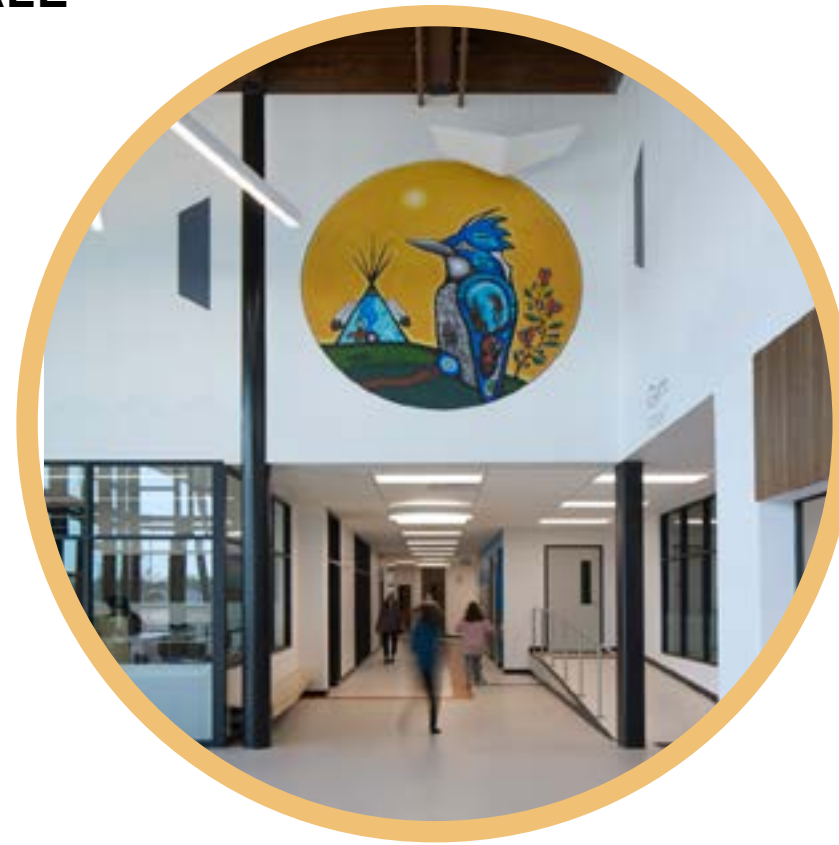
SENSE OF SCALE



MATERIALITY



SENSE OF COMFORT



SENSE OF SECURITY





SHARED LOUNGE SPACE

EARLY YEARS FLEXIBLE CLASSROOM



OLDER YEARS FLEX SPACE





MIXED AGES



ADAPTABILITY OF SPACE

OUTDOOR CLASSROOM



DIFFERENT LEARNING STYLES



3 **CASE STUDIES**

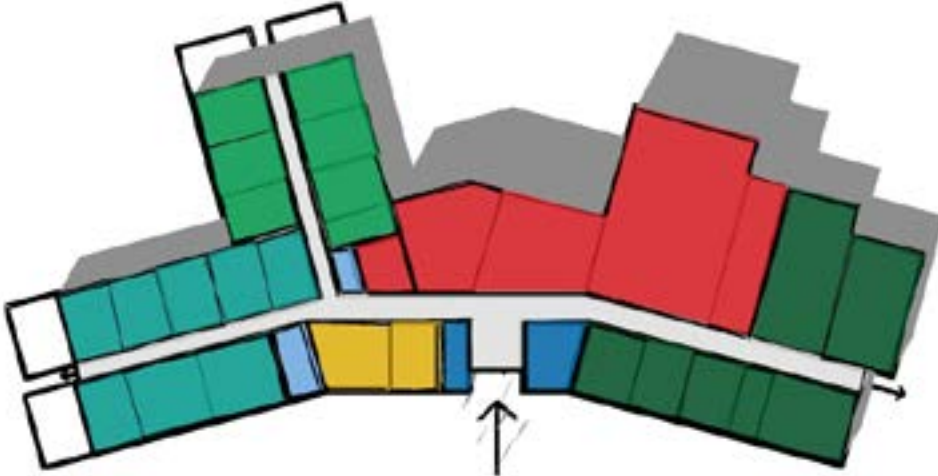


Case Study ONE

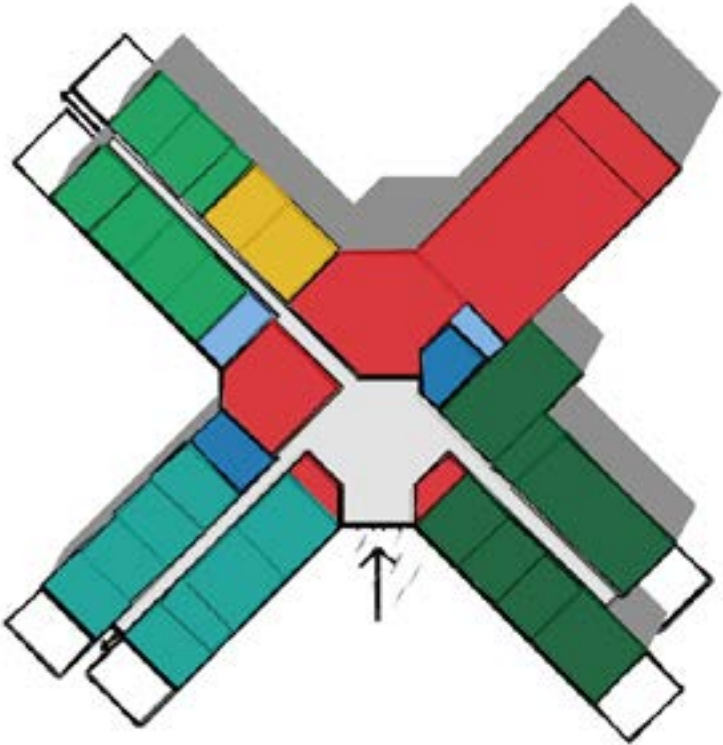
Lake St. Martin First Nation



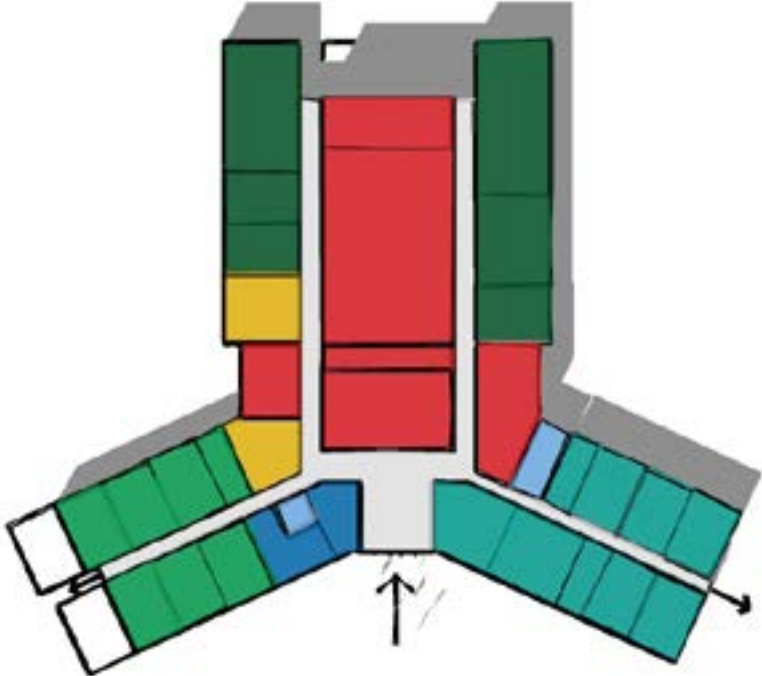
Schematic Plans



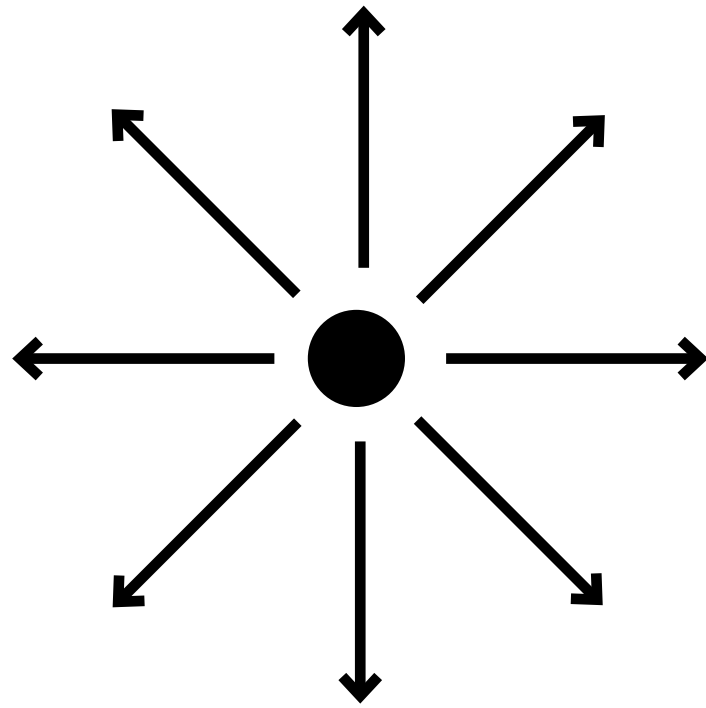
OPTION 1
"ARC"



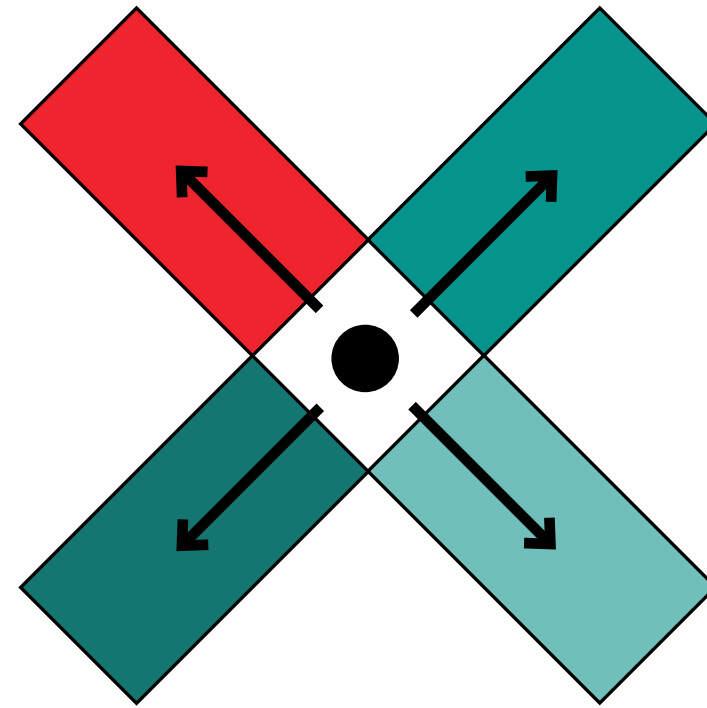
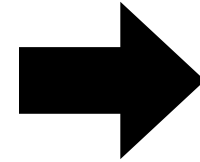
OPTION 2
"X"



OPTION 3
"Y"

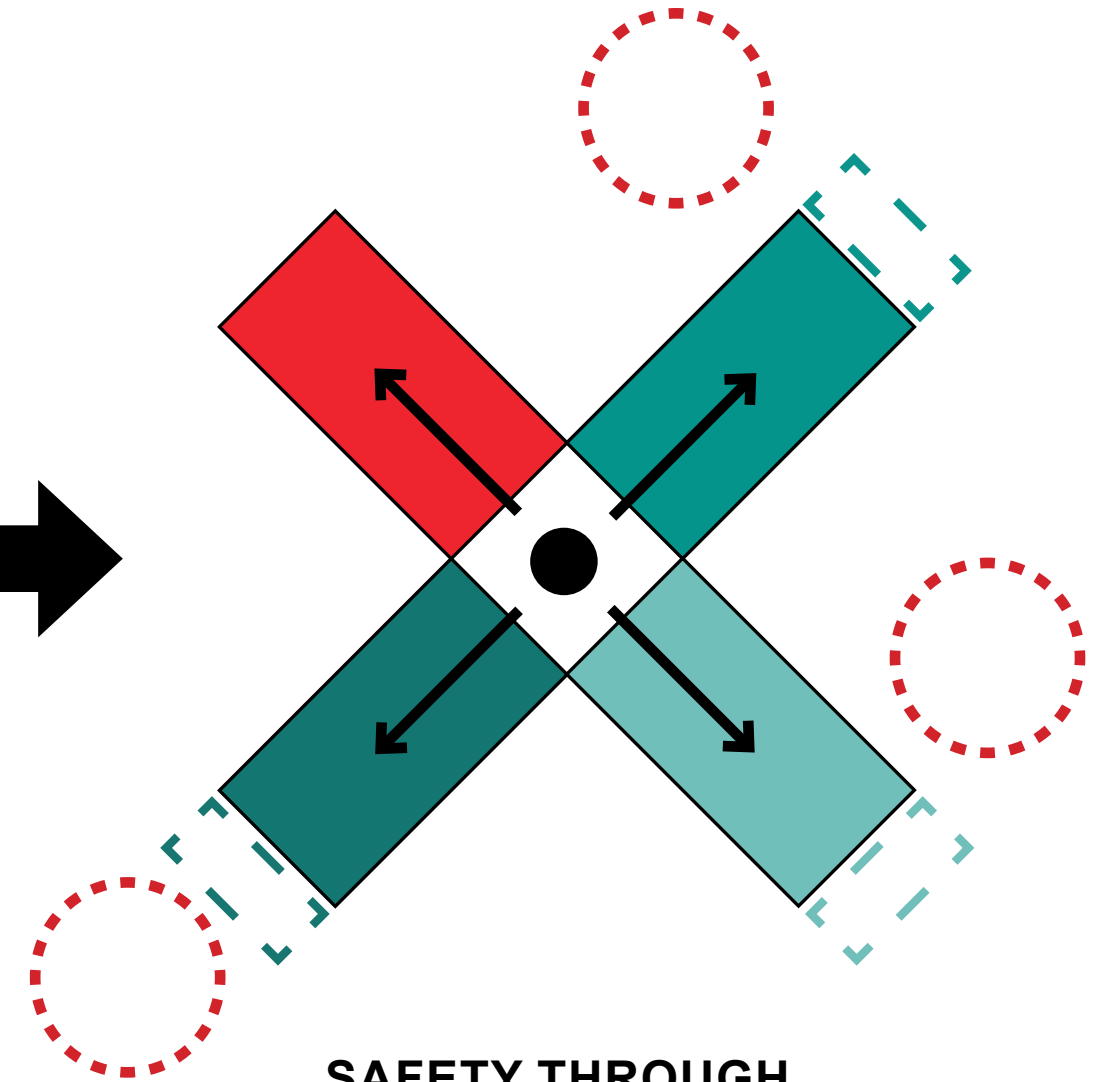
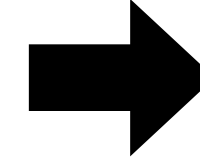


**MAXIMUM
SURVEILLANCE**



**SAFETY THROUGH
SEPARATION OF AGE GROUPS**

K - GR.4
GR.4 - GR.8
GR.9 - GR.12
GYM



**SAFETY THROUGH
SEPARATION OF AGE GROUP
OUTDOOR PLAY ZONES**

[-] FUTURE EXPANSION

○ PLAY AREA

Concept

safety + security = harmony





Main entrance of school



Flooring indicating wayfinding immediately from main entrance



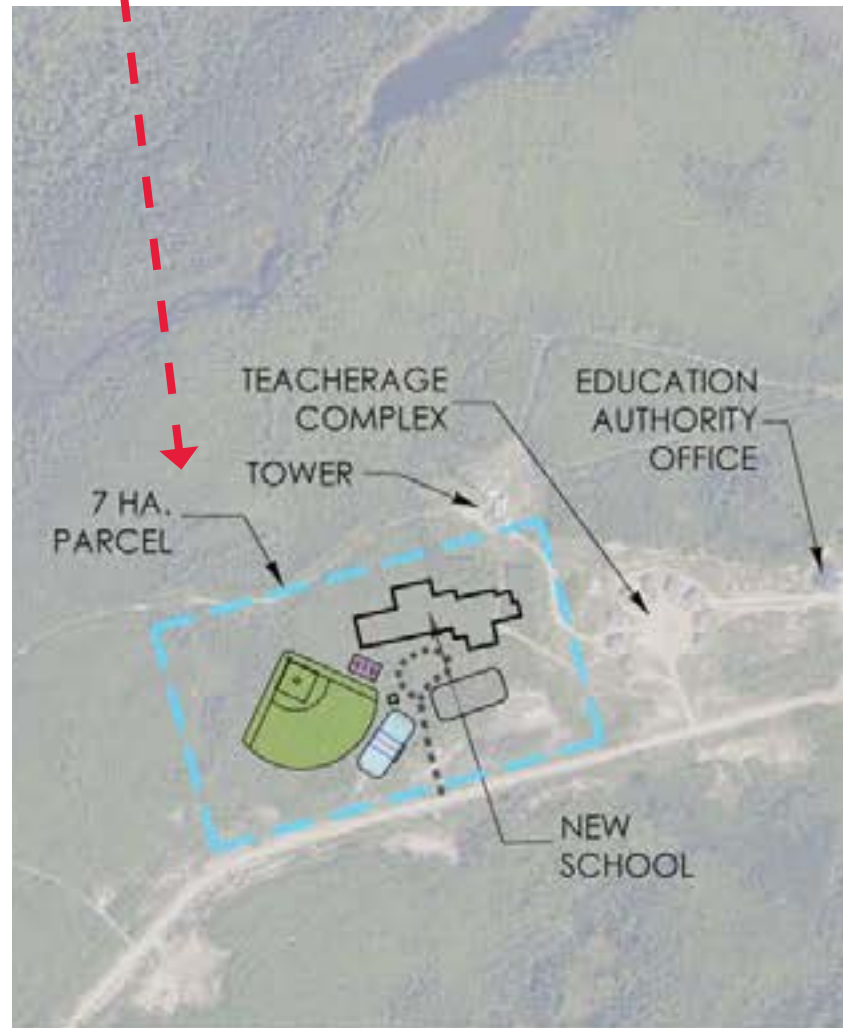
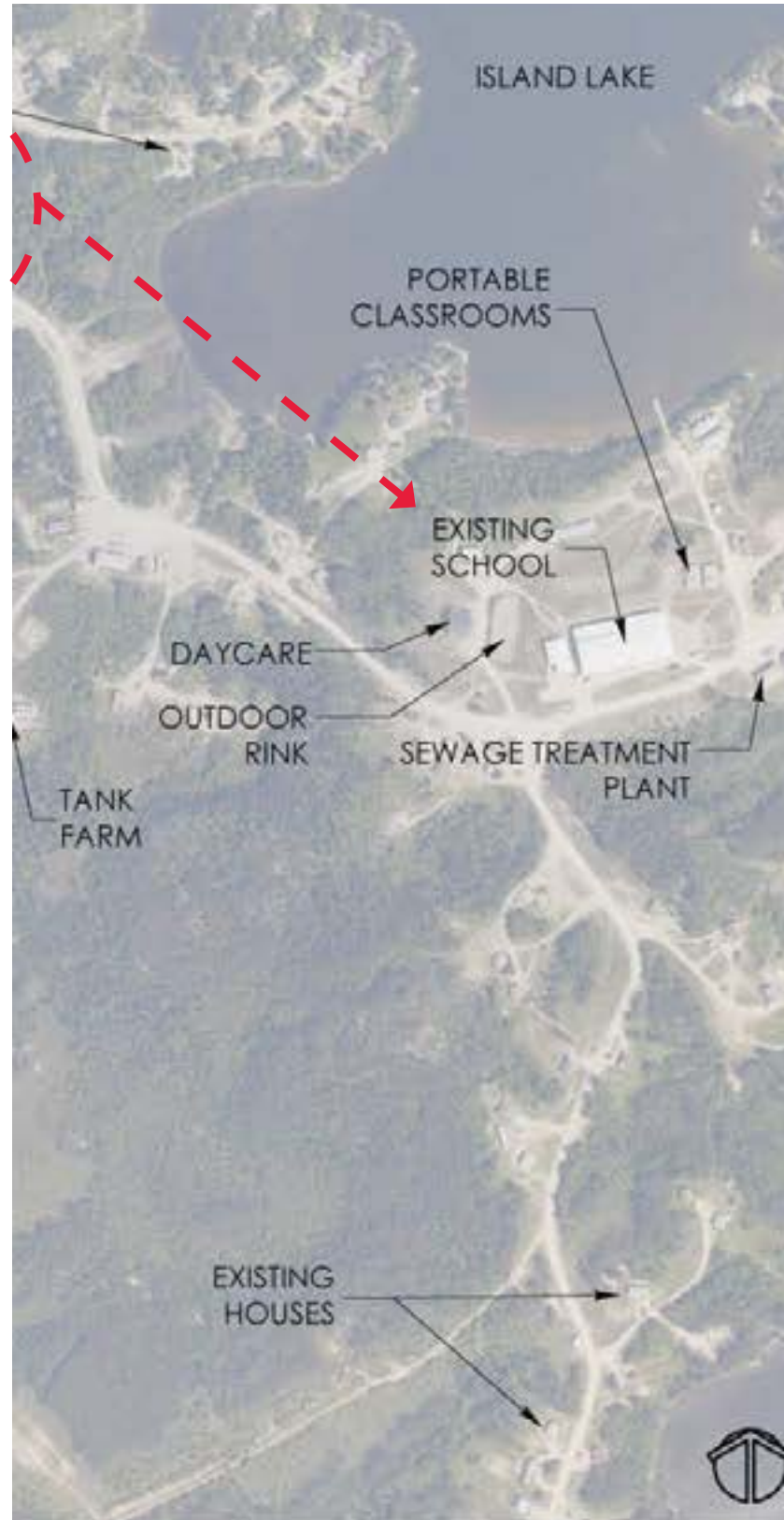
Grade and age differentiated via colour of corridor



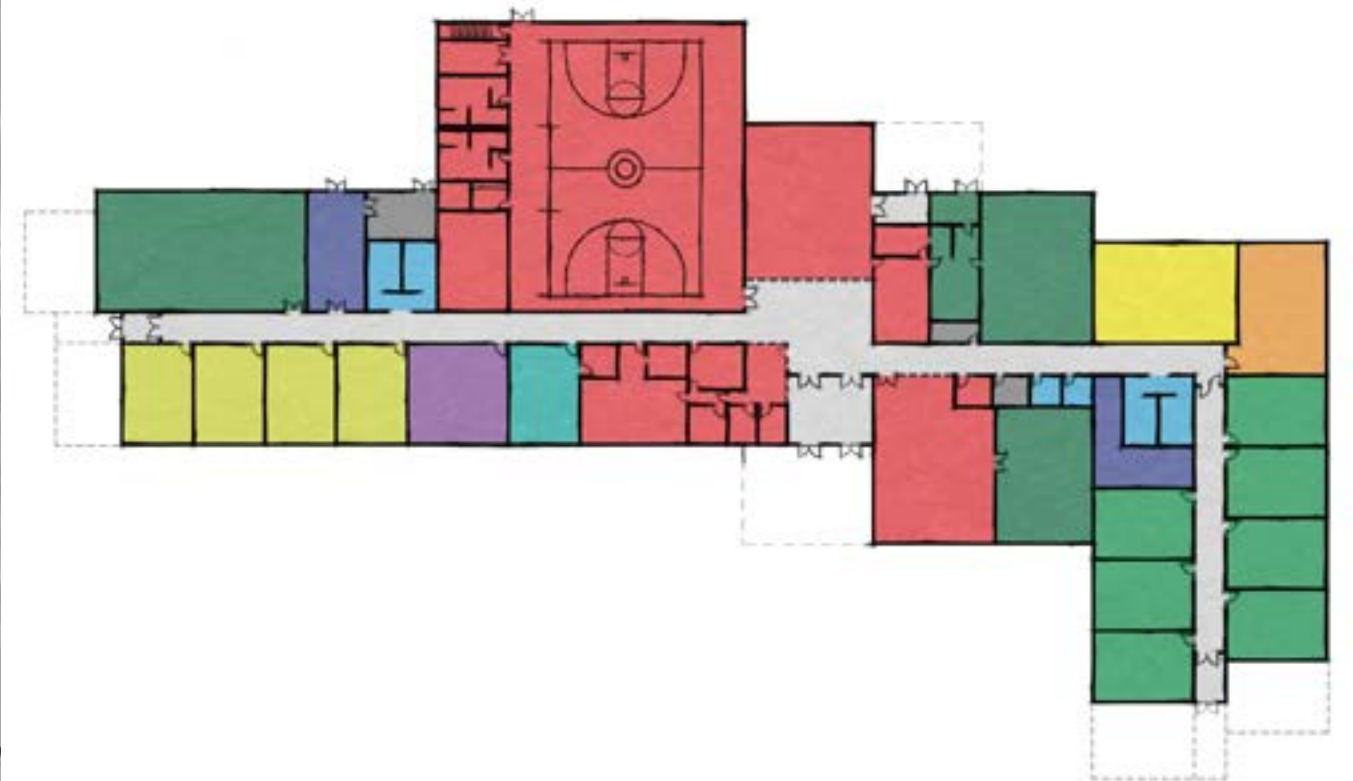
Case Study TWO

Wasagamack First Nation





EXISTING SCHOOL PLAN



PROPOSED GR. 7-12 PLAN



Case Study THREE

Mathias Colomb Cree Nation



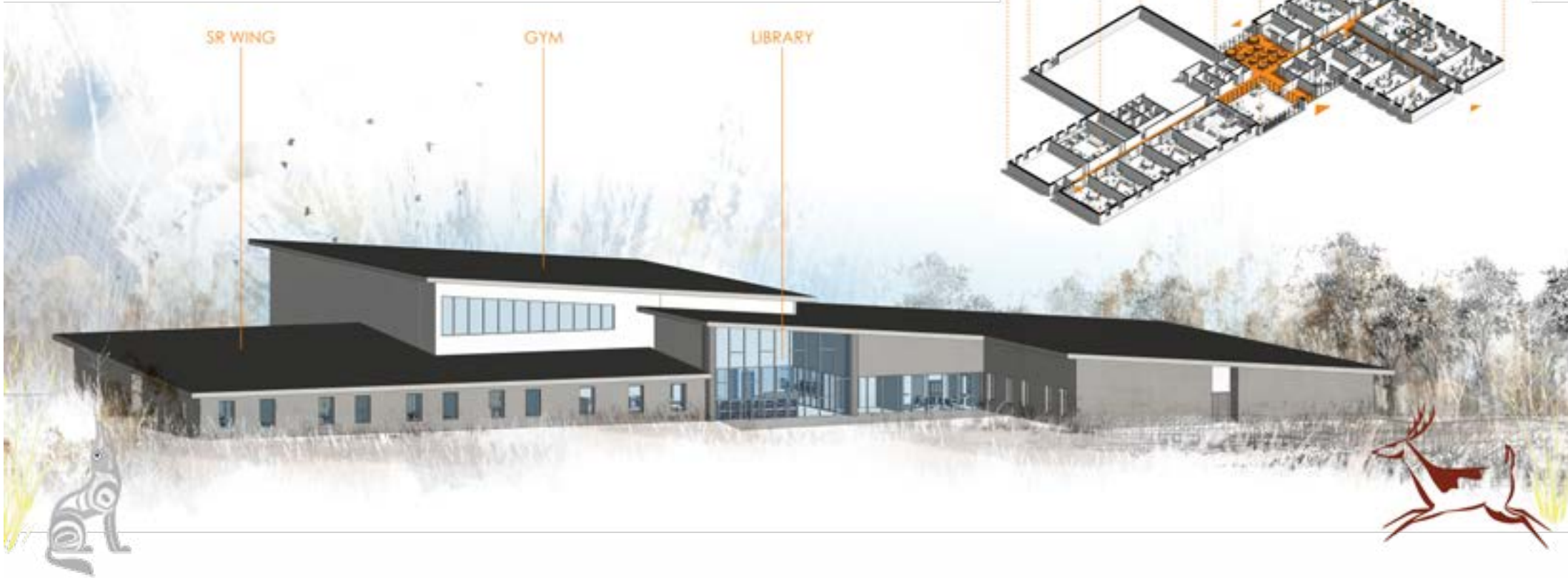
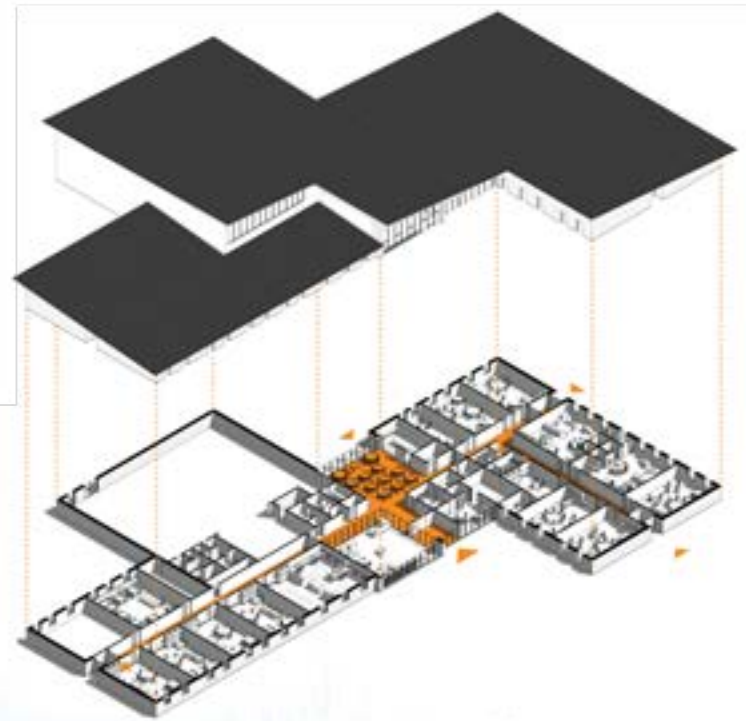
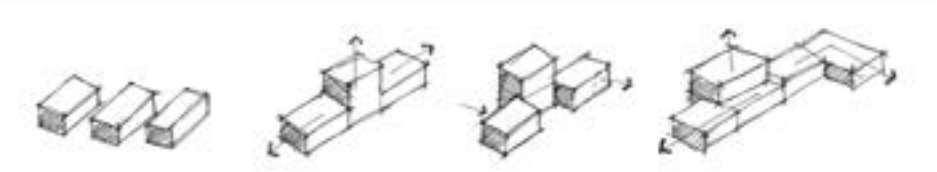


EXISTING CORRIDOR CONDITION

Case Study FOUR

O-chi-Chak-Ko-Sipi First Nation





Front Elevation

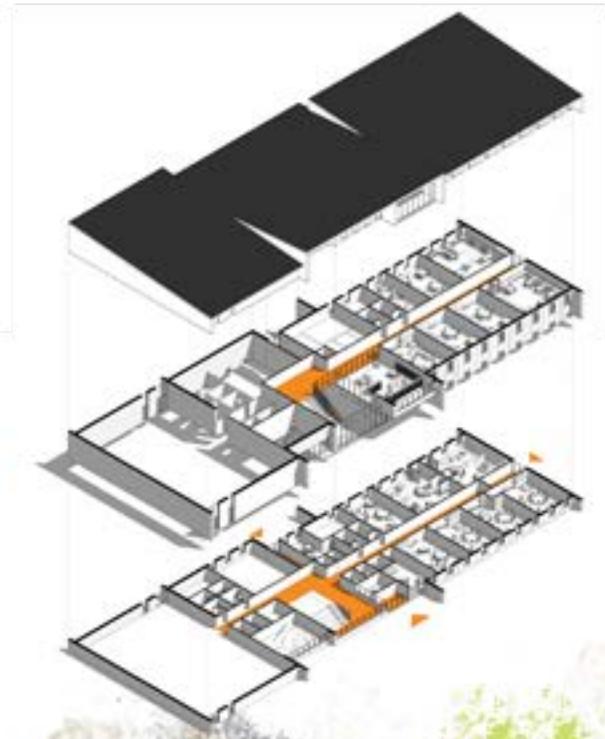
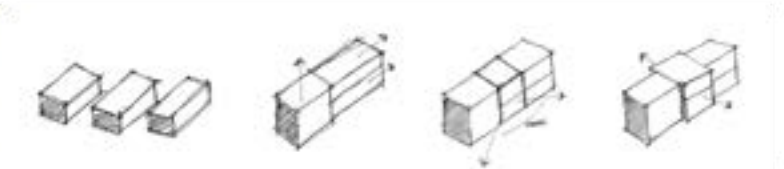


Back Elevation

Concept

Prairie Plains





Front Elevation

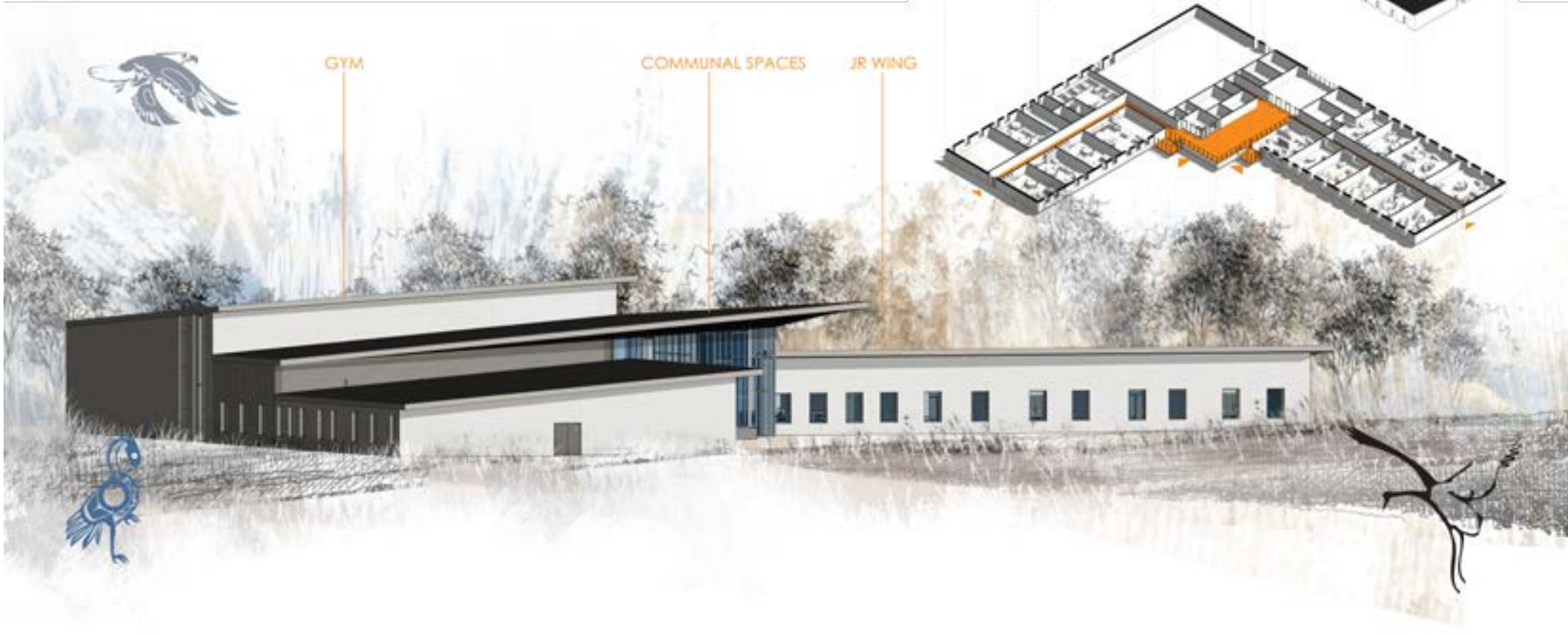
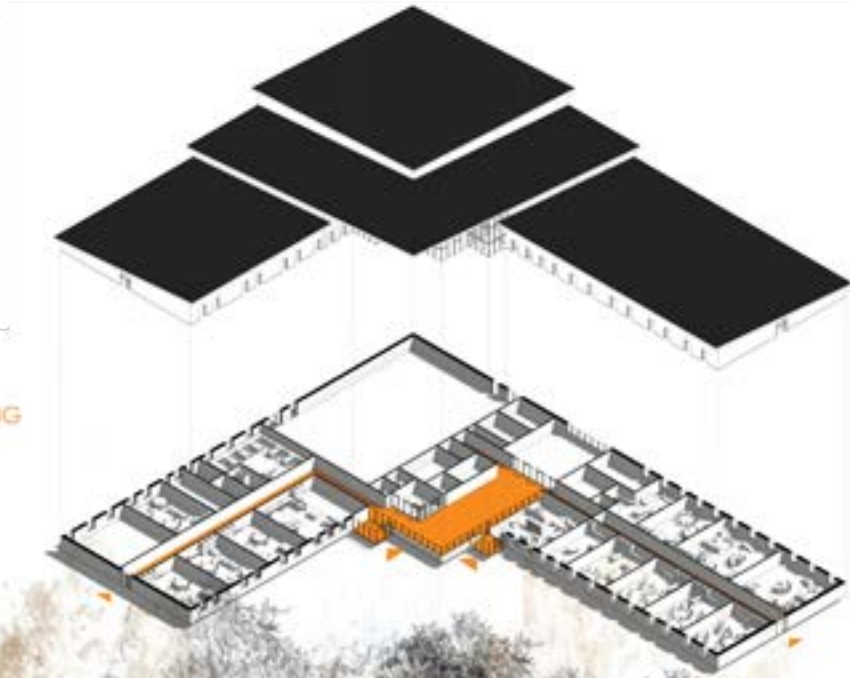


Back Elevation

Concept

Aspen Forest





front Elevation



back Elevation

Concept

Taking Flight





Case Study FIVE

Kitchenuhmayhoosib First Nation





JUNIOR CAFETERIA



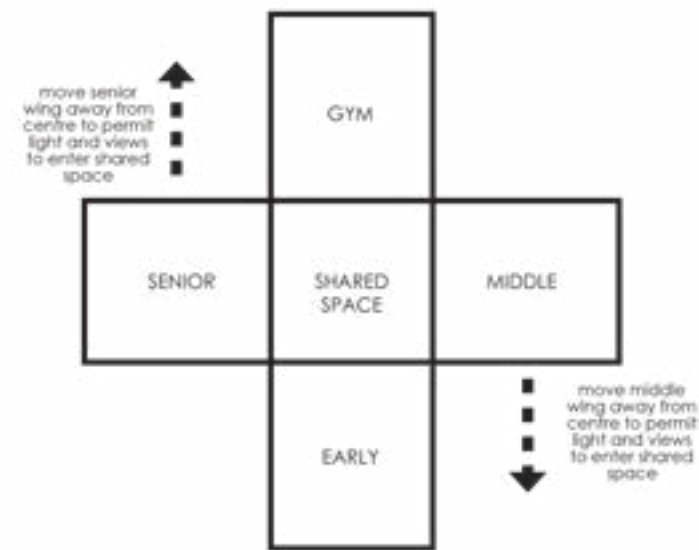
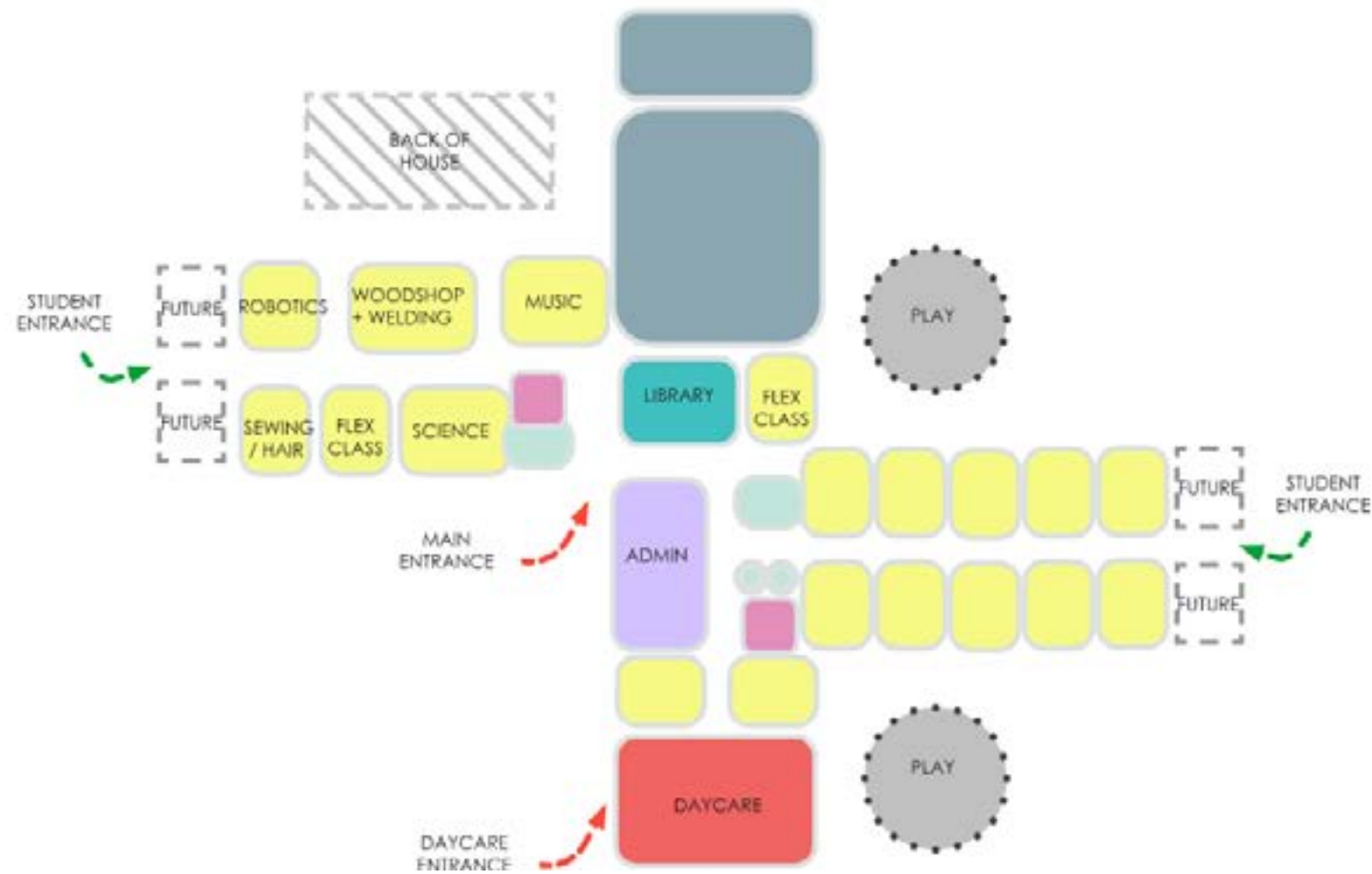
SENIOR CAFETERIA



Case Study SIX

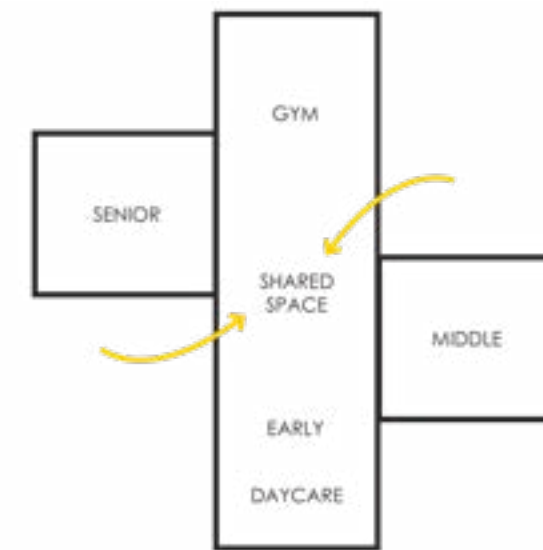
Ecole Quatre Saisons





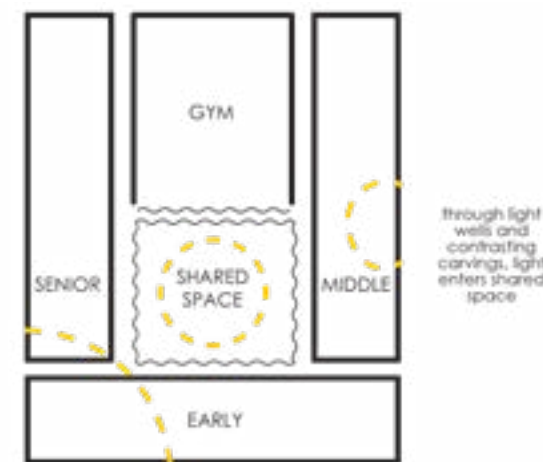
CONCEPT CHALLENGES

- large and introverted core
- the core has little access to natural light
- the core has little visual connectivity to the community



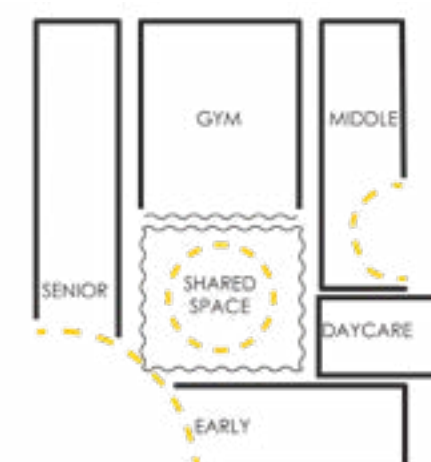
CONCEPT OPPORTUNITIES

- opportunity for differentiation between early years and senior
- light and views can enter shared spaces



CONCEPT CHALLENGES

- large and introverted core
- the core has little access to natural light
- the core has little visual connectivity to the community



CONCEPT OPPORTUNITIES

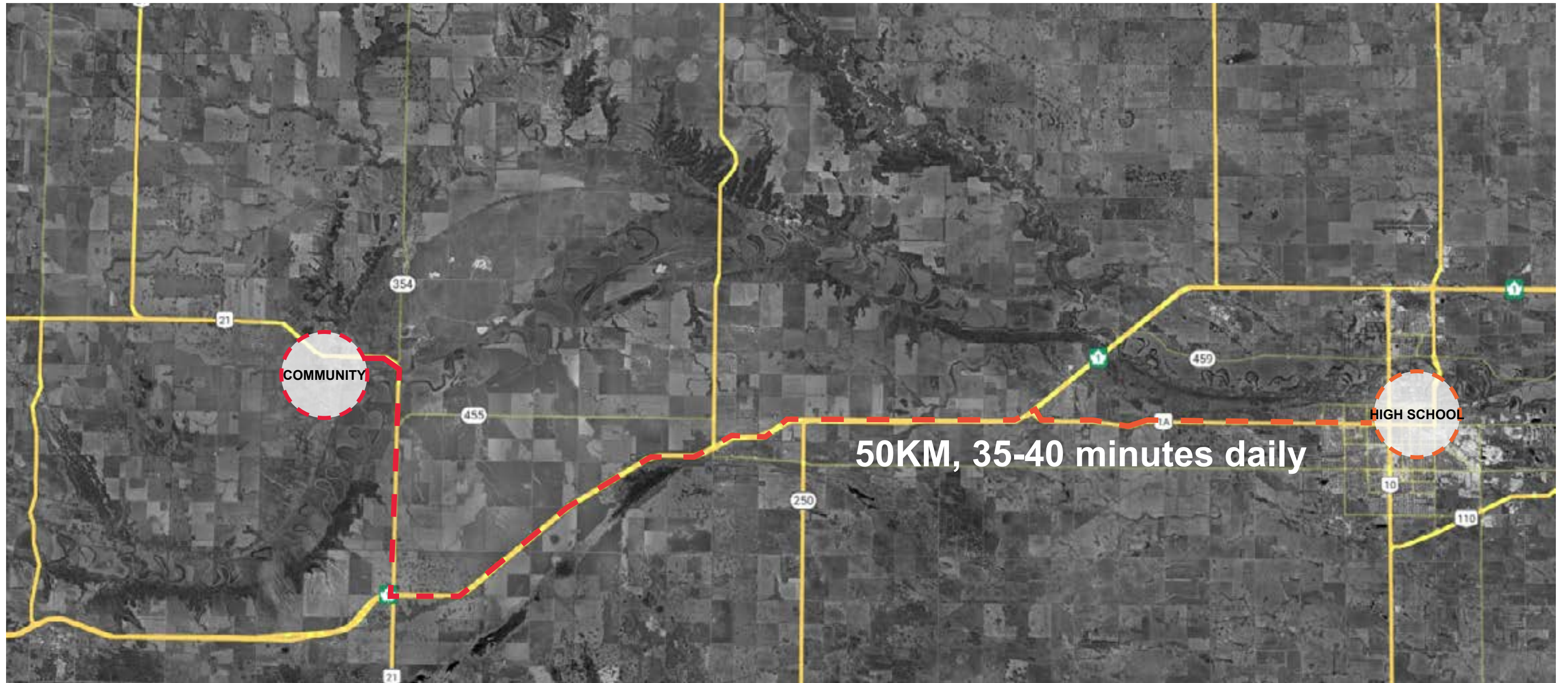
- compact plan
- hyper flexible core with structured exterior frame of more traditional classroom layouts
- bring light to interior in creative ways



Case Study SEVEN

First Nation Campus

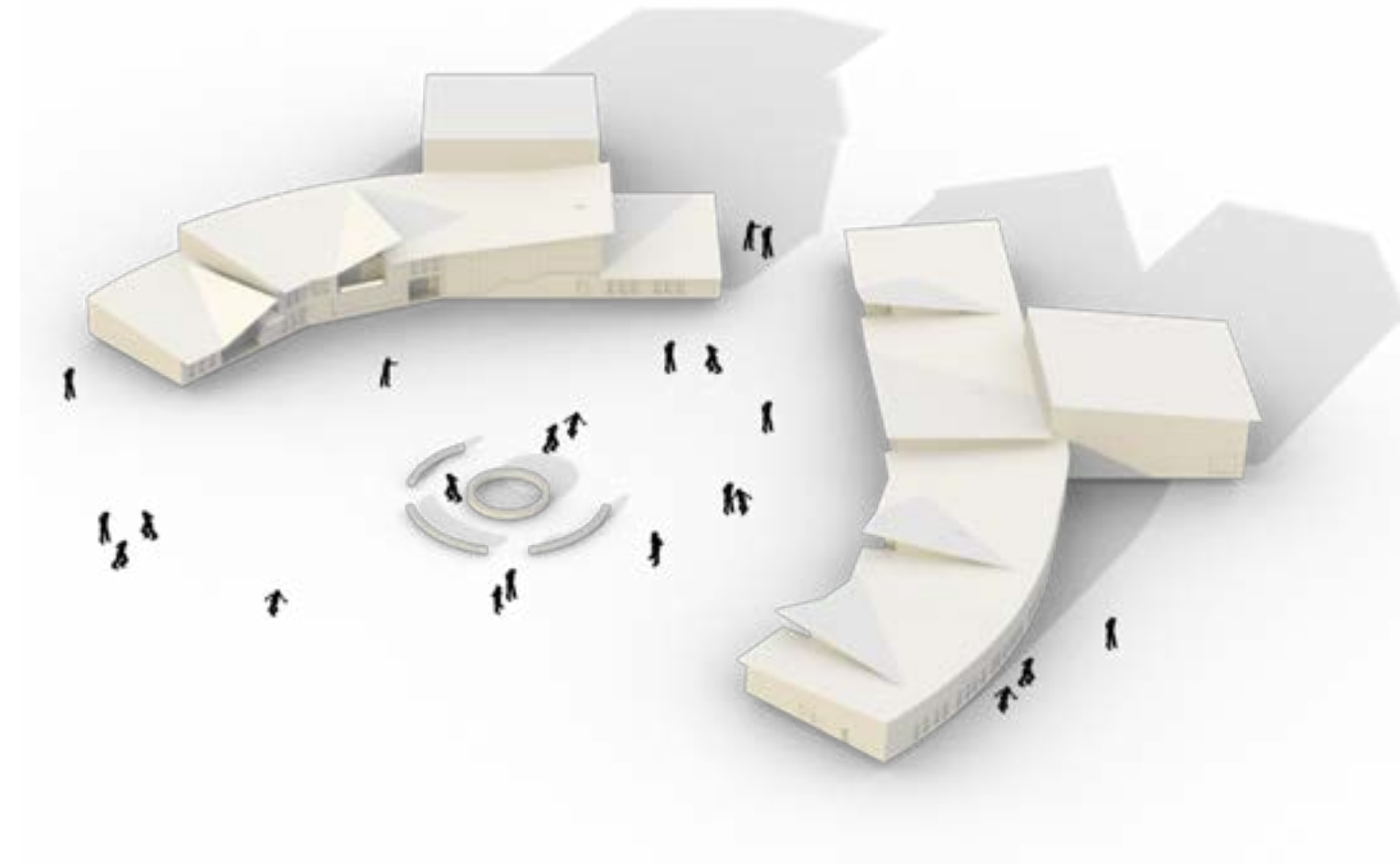
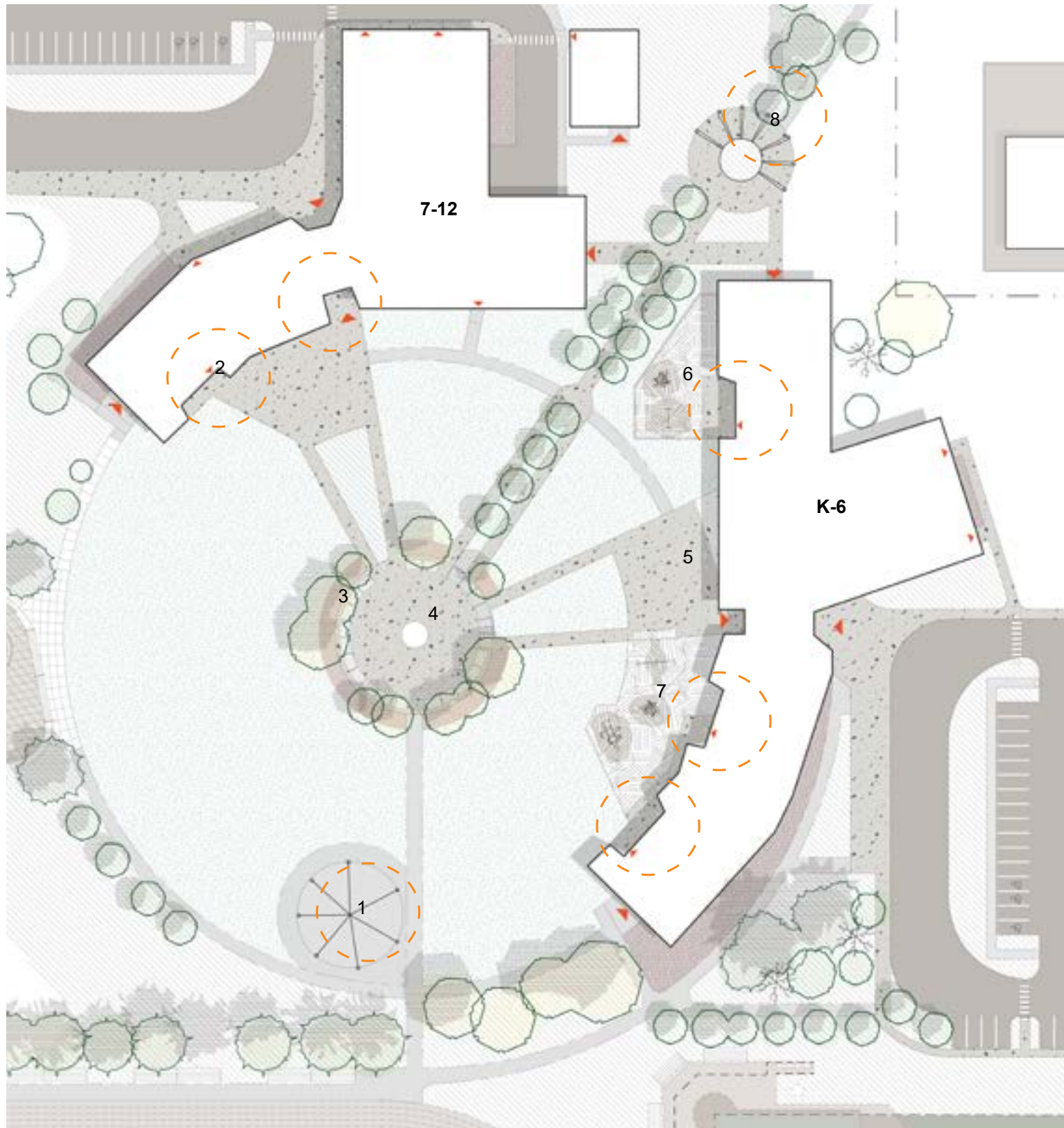




The Dream

two schools, one site, and a desire to have all students back in community





Campus Design





Exterior perspective - high school



Exterior perspective - elementary school





Common flex space



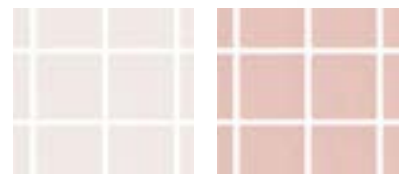
HIGH SCHOOL 7-12



EXTERIOR MASONRY



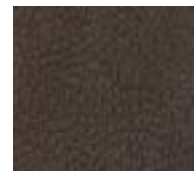
ACCENT FLOORING



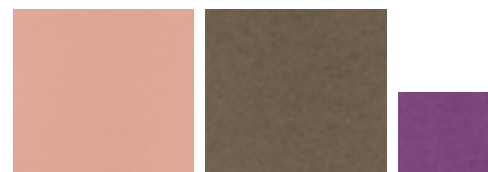
WALL TILE



ACCENT LAMINATE ACCENT PAINT



FABRIC

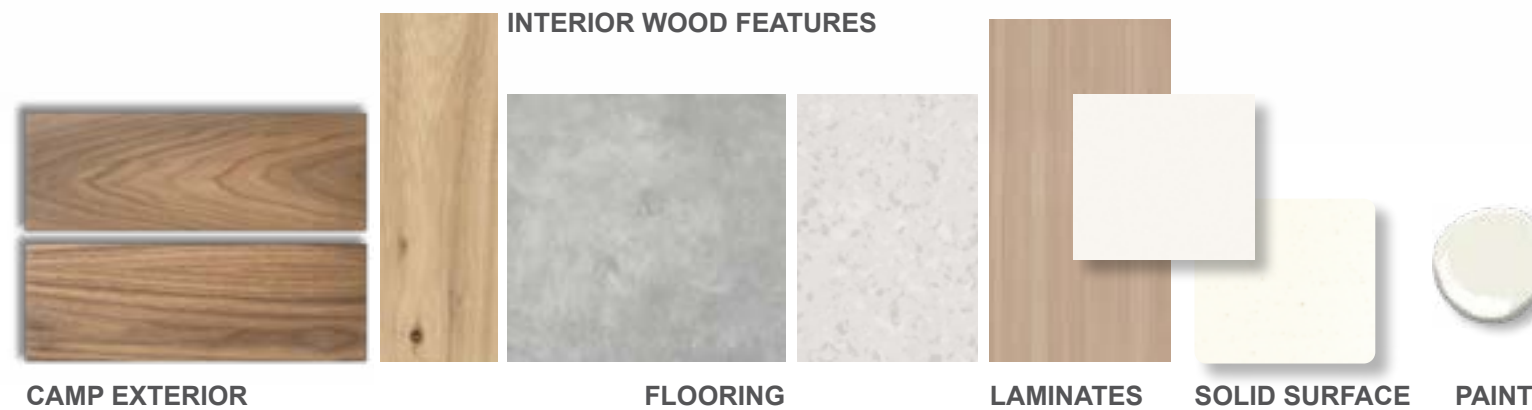


ACOUSTIC PANELS



INTERIOR CONCEPT COLLAGE - SUNRISE AND SUNSET

GENERAL MATERIALS



CAMP EXTERIOR

FLOORING

LAMINATES

SOLID SURFACE

PAINT

ELEMENTARY K-6



EXTERIOR MASONRY



ACCENT FLOORING



WALL TILE



ACCENT LAMINATE ACCENT PAINT



FABRIC



ACOUSTIC PANELS

Materials and Finishes

CONCLUSIONS:

- SAFETY & SECURITY
- COMFORT
- AUTONOMY AND INDIVIDUALITY
- FLEXIBILITY AND ADAPTABILITY
- MENTORSHIP AND RELATIONSHIPS





THANK YOU

Questions?