



**How an All-Hands Approach
Empowered an Underserved School Community**

Objective 1: Learn how to establish and leverage innovative partnerships to provide resources and mentorship opportunities for your students and educational community.

Objective 2: Identify strategies for planning and designing facilities that are heavily reliant on donor funding and whose final budget may be unknown during initial design phases.

Objective 3: Learn how creative strategies employed in design and the leveraging of existing assets can stretch dollars to achieve programmatic goals on a limited budget.

Objective 4: Anticipate opportunities to plan educational facilities so they can double as a community resource, thereby embedding them in their neighborhood and providing additional streams of revenue for the school.

Ashleigh de Villiers



President

De La Salle North
Catholic High School

Jonna Frater, '06



**Alumna and
Member Board of
Trustees**

De La Salle North
Catholic High School

Amy Donohue



Principal

Bora Architecture &
Interiors

Jaden Trinh, '25



Student

De La Salle North
Catholic High School

AGENDA

- 01** The Challenge: A Permanent Home for De La Salle
- 02** The Reason: Education for Lifelong Success
- 03** The Design: Leveraging Spatial + Funding Resources
- 04** The Impact: Student Intern Perspective

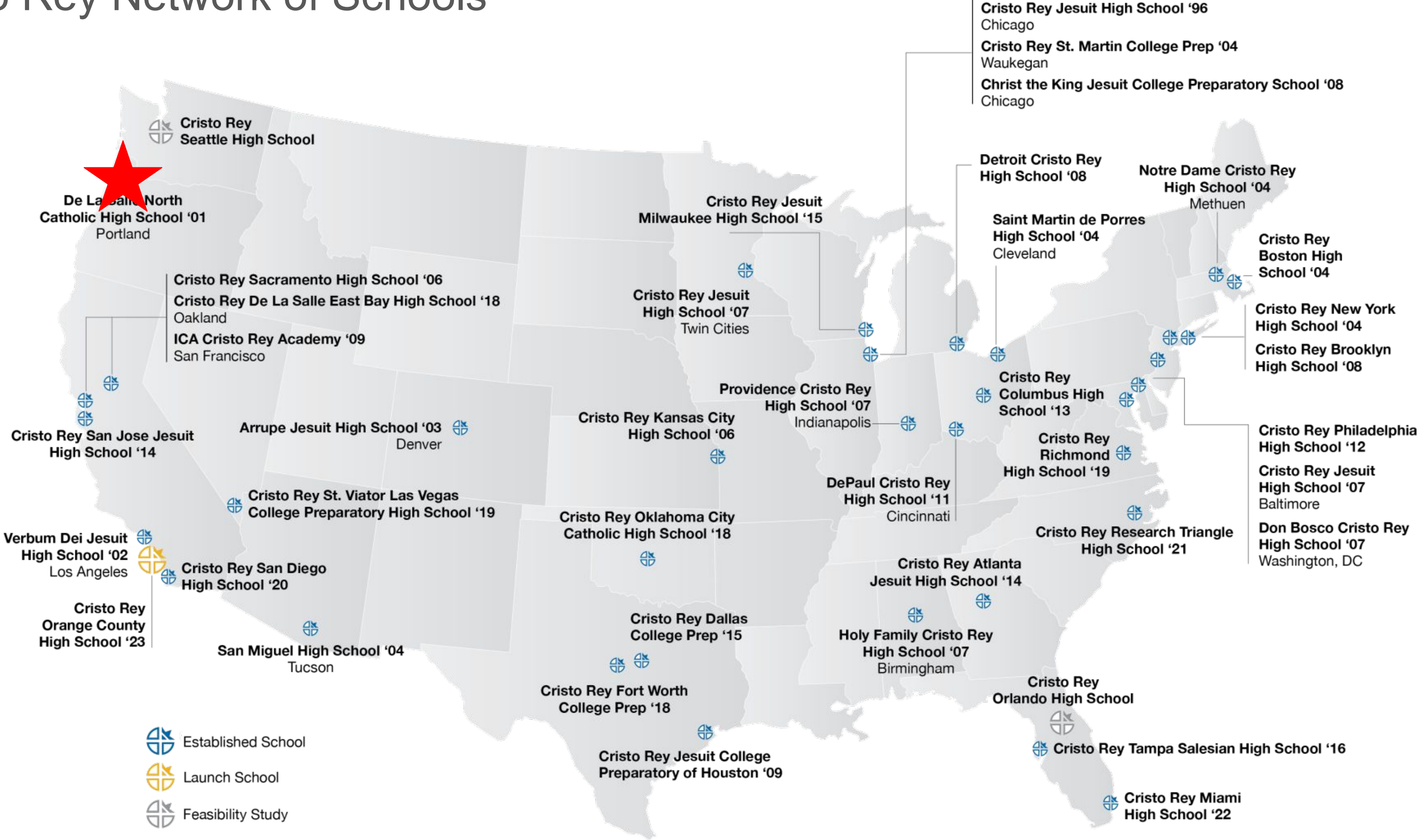
01

The Challenge





Cristo Rey Network of Schools





Accounting & Finance

- Aldrich
- Becker Capital Management
- Deloitte
- First Tech Federal Credit Union
- Great Northern Staff Administrators
- KPMG
- Moss Adams
- Nike Global Controlling Operations
- OnPoint Community Credit Union
- RVK, Inc.
- Umpqua Bank

Education

- Astor Elementary School
- Cesar Chavez School
- Community Transitional School
- KairosPDX
- St. Andrew Nativity School

Architecture, Construction, Engineering & Real Estate

- APEX Real Estate Partners
- Associated General Contractors
- BORA Architecture & Interiors
- BRIC Architecture, Inc.
- Cascade Energy, Inc.
- Cascadia Partners
- GBD Architects
- Hacker
- Hoffman Construction Company
- JE Dunn Construction
- KPFF Consulting Engineers
- NorthWest Engineering Service, Inc.

Legal

- Buchalter
- Farleigh Wada Witt
- Tonkon Torp LLP

Logistics & Transportation

- Expeditors
- Market Express LLC

Manufacturing

- Daimler Truck North America
- Grand + Benedicts
- PCC Structural, Inc.
- Tektronix

Creative & Design

- Bodecker Foundation
- Columbia Sportswear
- Grovemade
- Nike Jordan

Nonprofit

- American Red Cross—Cascades Region
- Catholic Charities of Oregon
- Chess for Success
- El Programa Hispano Católico
- Friends of Trees
- Girls Build
- Growing Gardens
- Lan Su Chinese Garden
- Medical Teams International
- MetroEast Community Media
- Portland Art Museum
- Volunteers of America Oregon

COLLEGE
ACCEPTANCE RATE:

98%

over our 23-year
history

EDUCATION
FINANCED:

50%

From the innovative
Corporate Work
Study Program

IN THE CLASS OF
2023:

70%

received merit-
based scholarships
that totaled over
\$4.6 million

CURRENTLY ENROLLED:

220

Students

CORPORATE WORK STUDY PARTNERS

85

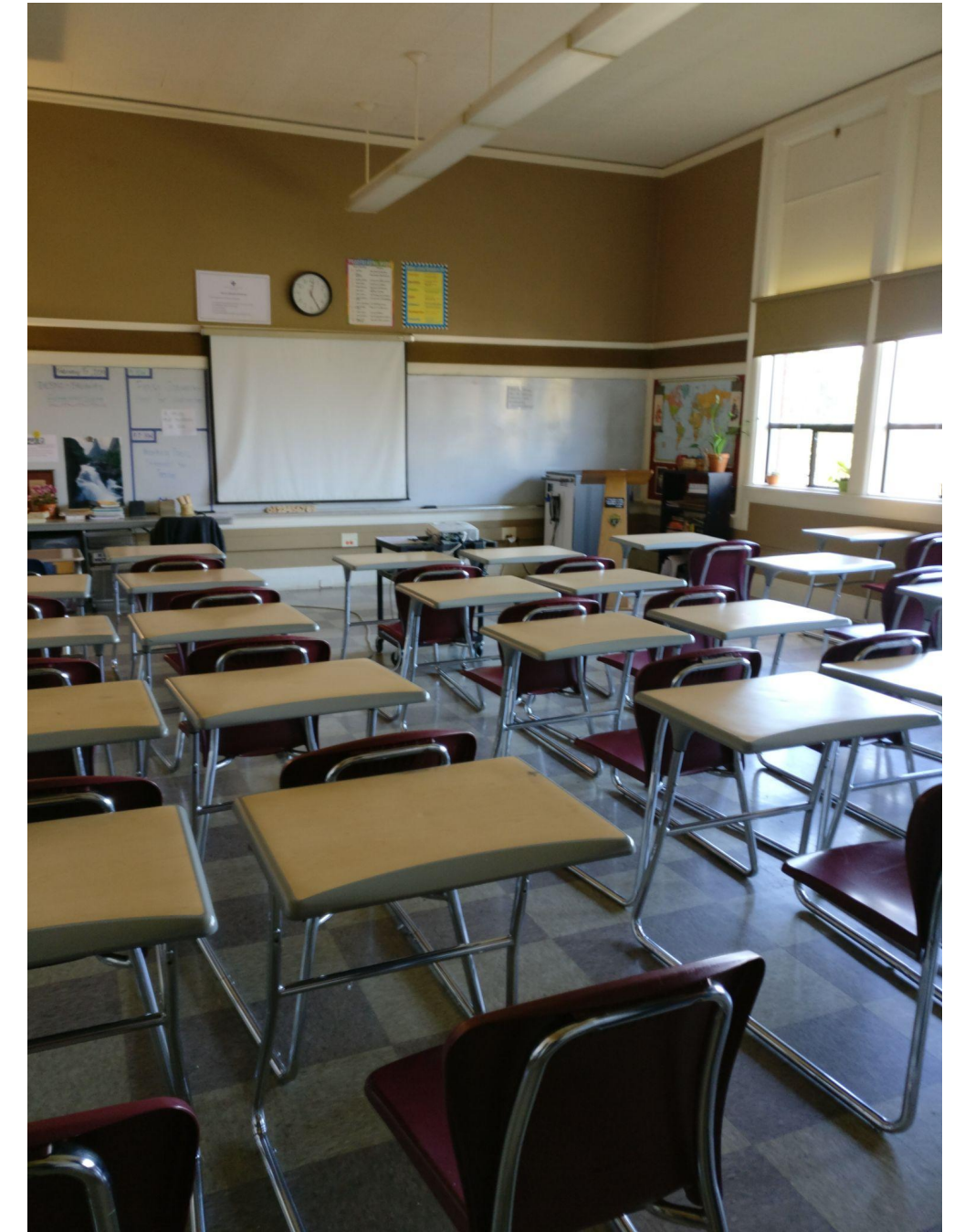
with 17 new partners this year

AVERAGE CLASS SIZE:

21

Student to teacher ratio is 13:1







\$15M
(max)

02

The Reason









**Oregon Health Sciences
University**









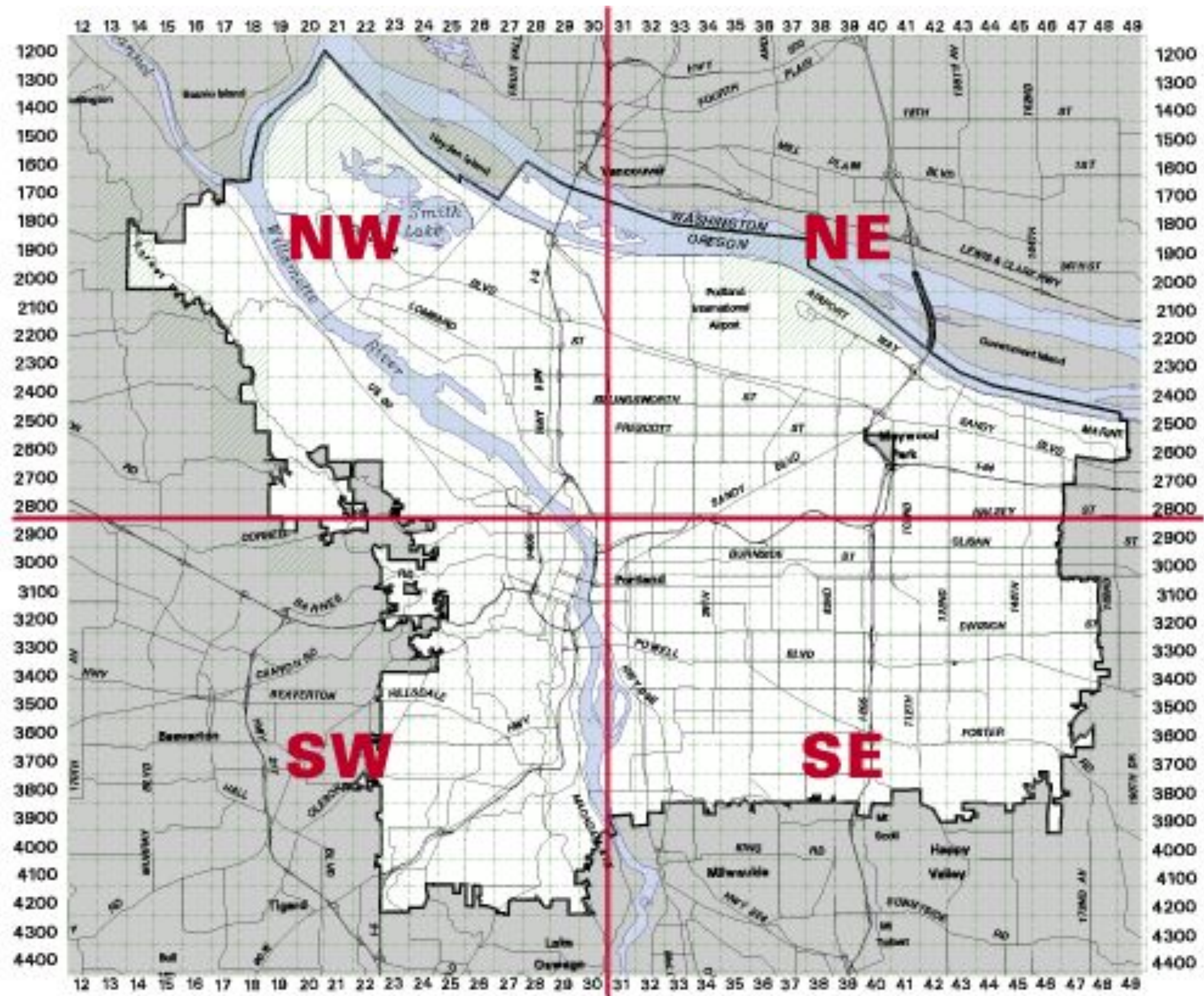
03

The Design



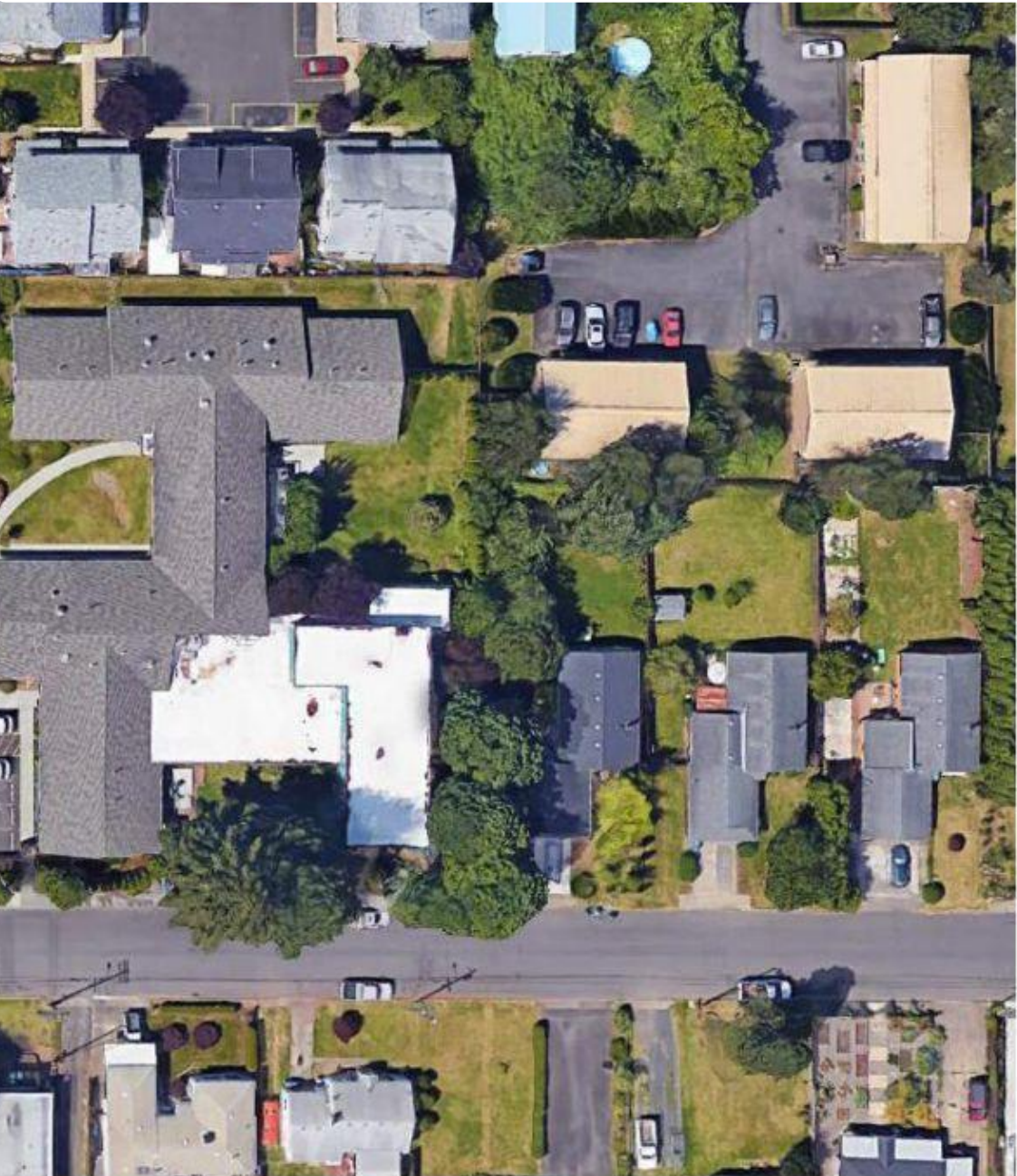
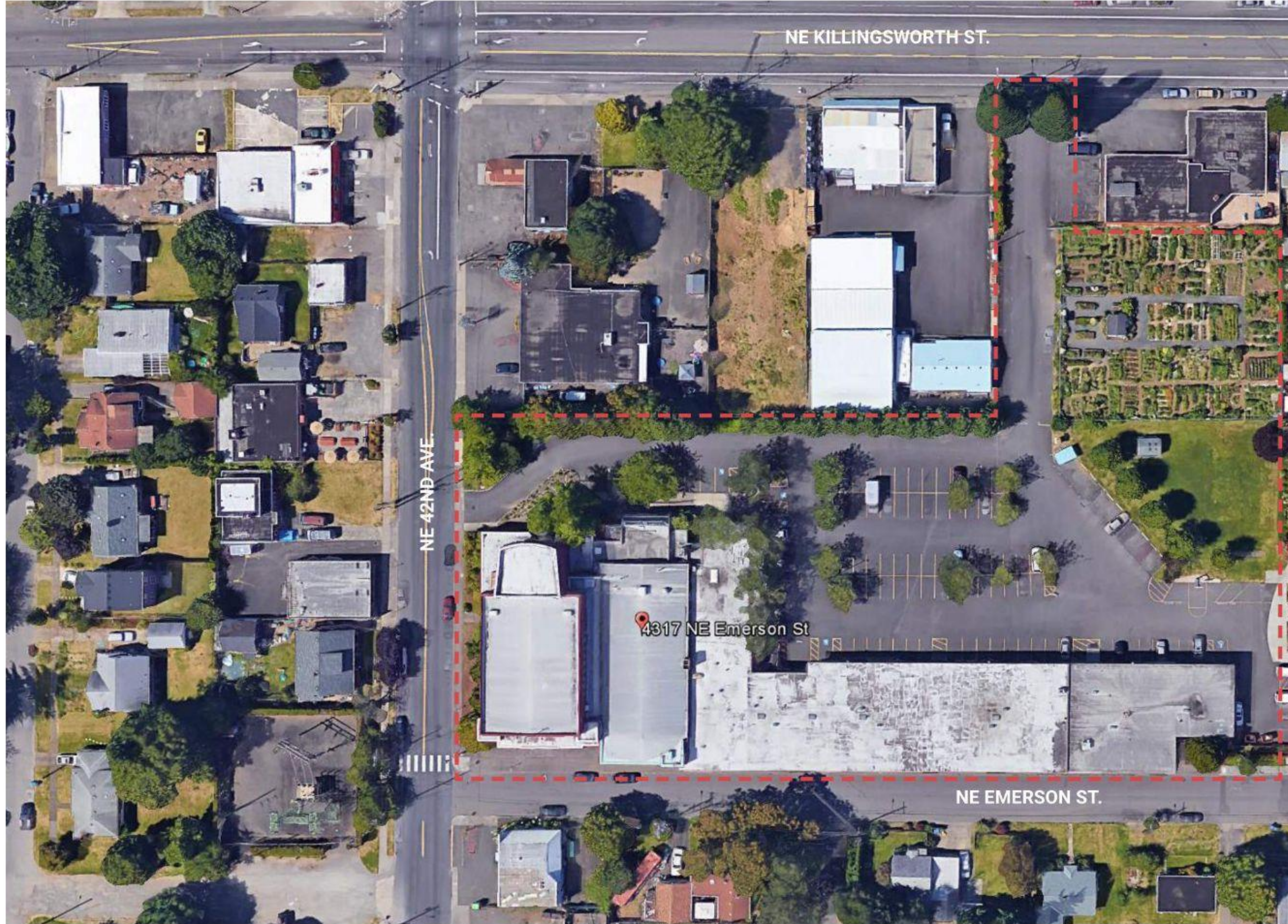
DE LA SALLE
NORTH CATHOLIC
HIGH SCHOOL





40 sites

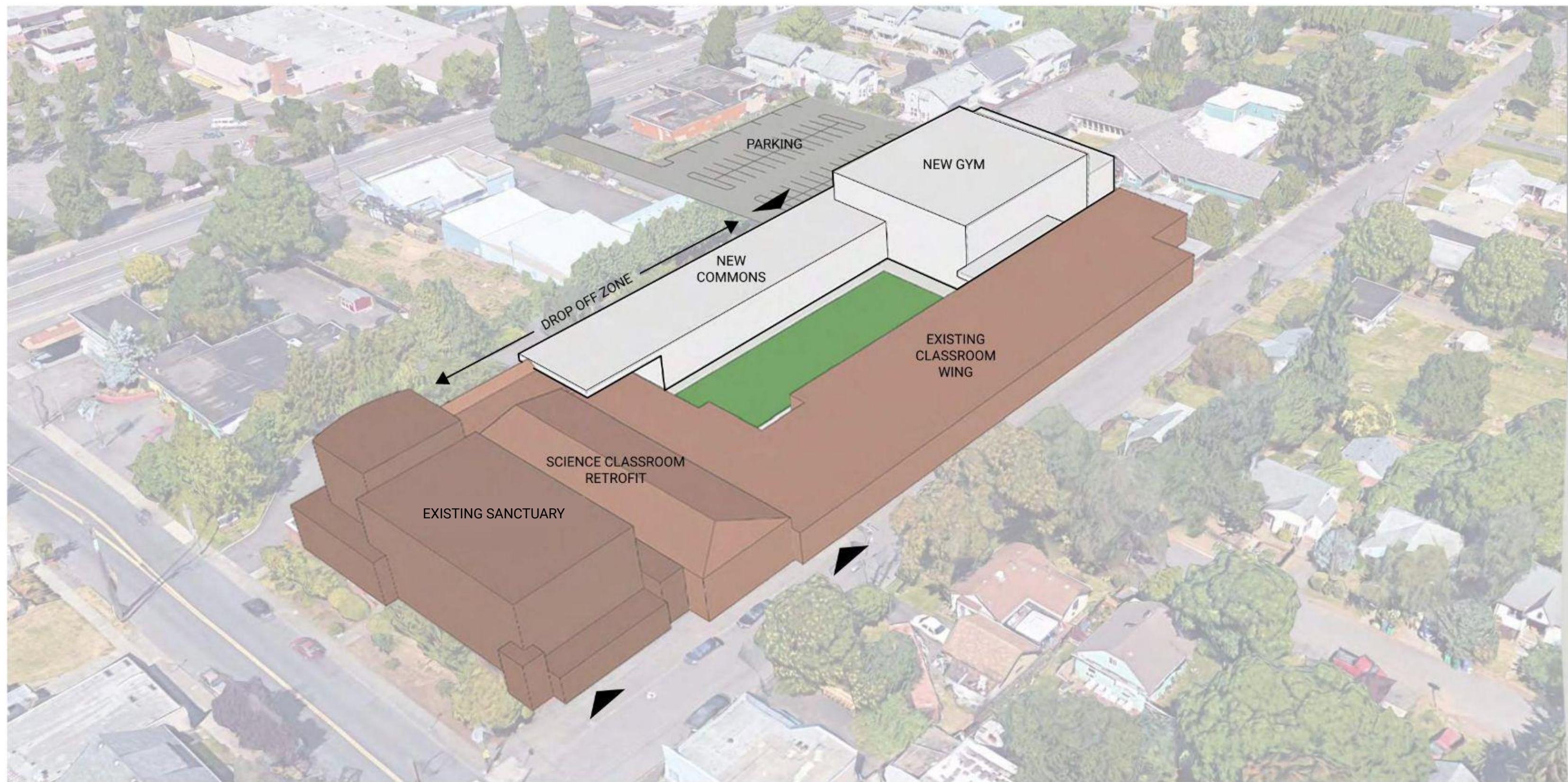
ST CHARLES







AERIAL VIEW





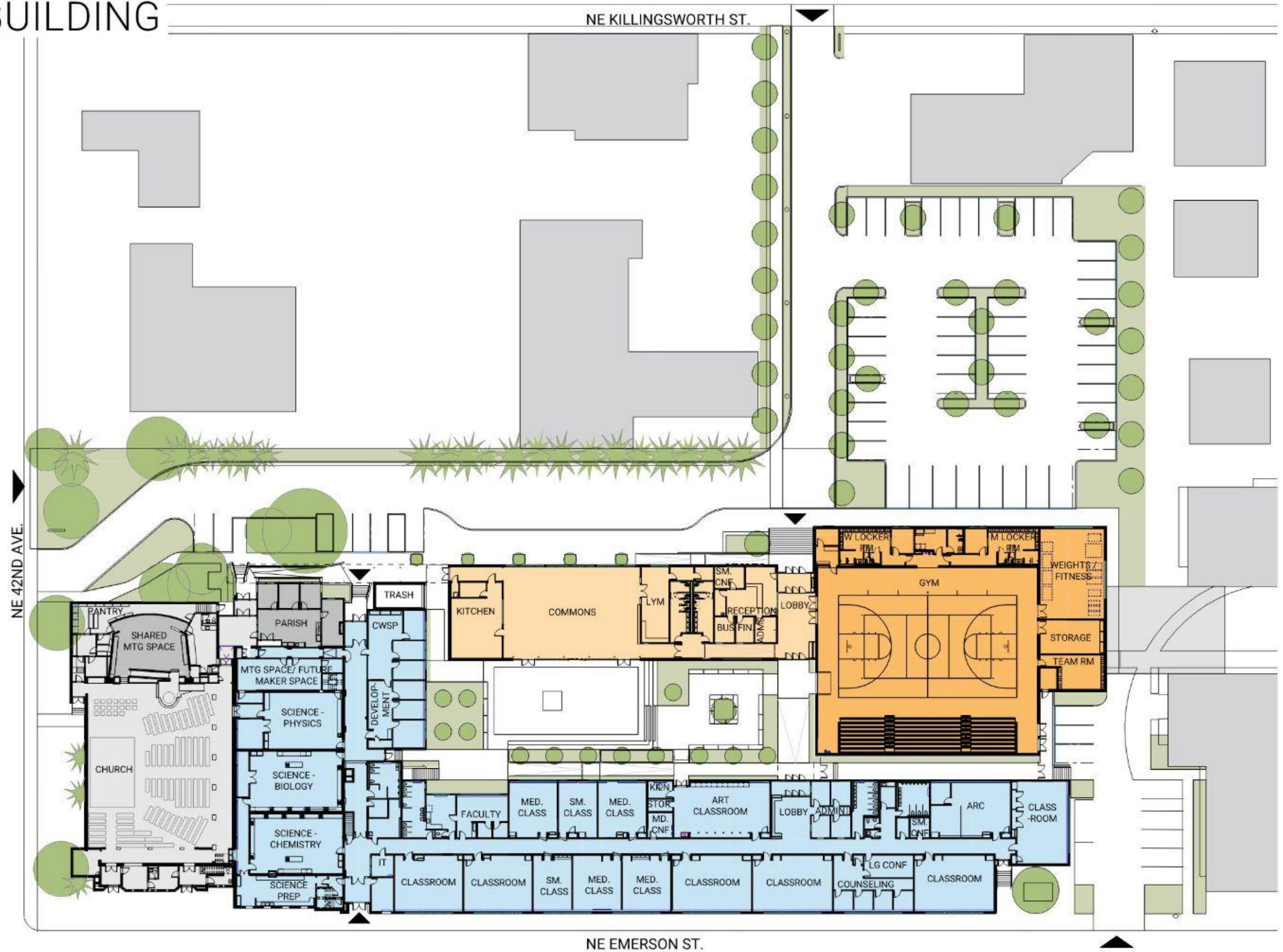
WALKER HALL

WALKER HALL

WALKER HALL

WALKER HALL

EXISTING + NEW BUILDING



Enter to Learn, Leave to Serve

THE GARDI TAMAR
CENTER FOR LADAKHIAN
YOUTH MINISTRY



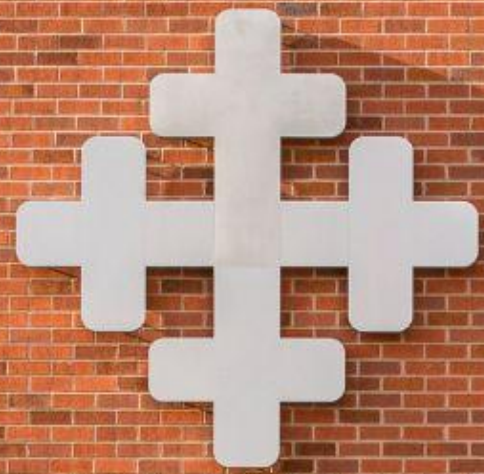


Men's Basketball LEAGUE CHAMPS 2015 DISTRICT CHAMPS 2015 LEAGUE CHAMPS 2016 DISTRICT CHAMPS 2016 LEAGUE CHAMPS 2017 DISTRICT CHAMPS 2017 LEAGUE CHAMPS 2018 DISTRICT CHAMPS 2018 LEAGUE CHAMPS 2019 DISTRICT CHAMPS 2019

HOME PERIOD GUEST

38 STATE CHAMPS 2018





DE LA SALLE
NORTH CATHOLIC
HIGH SCHOOL

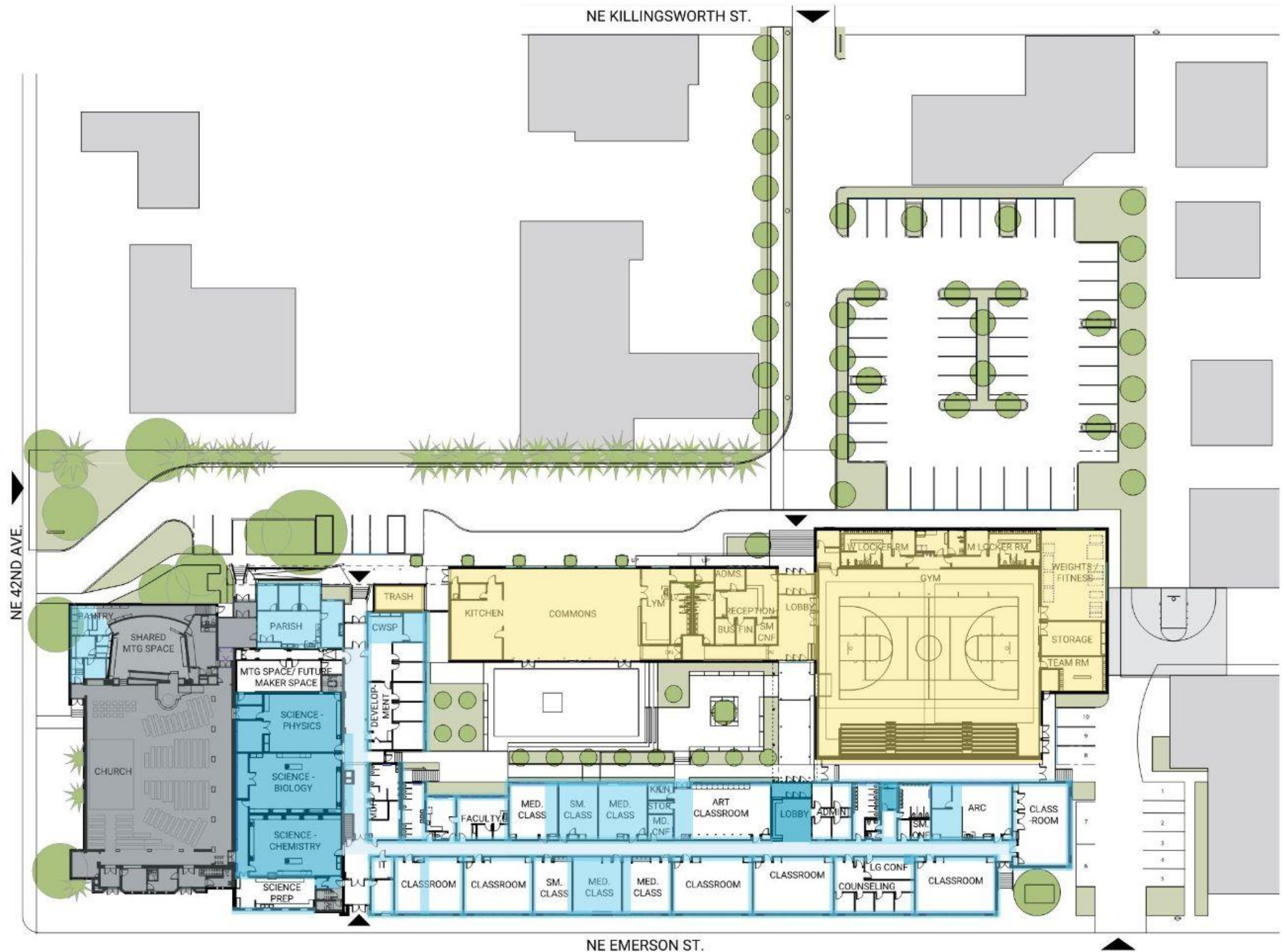


FLOOR PLAN

Program Accommodated:

- 12 General Classrooms
- Commons/ Kitchen
- Administration/ Admissions Space
- 3 Science Classrooms + Maker Space
- Fine Arts Program
- Physical Education/Gym
- Student Services
- Liturgical Space (shared with St. Charles)
- Courtyard

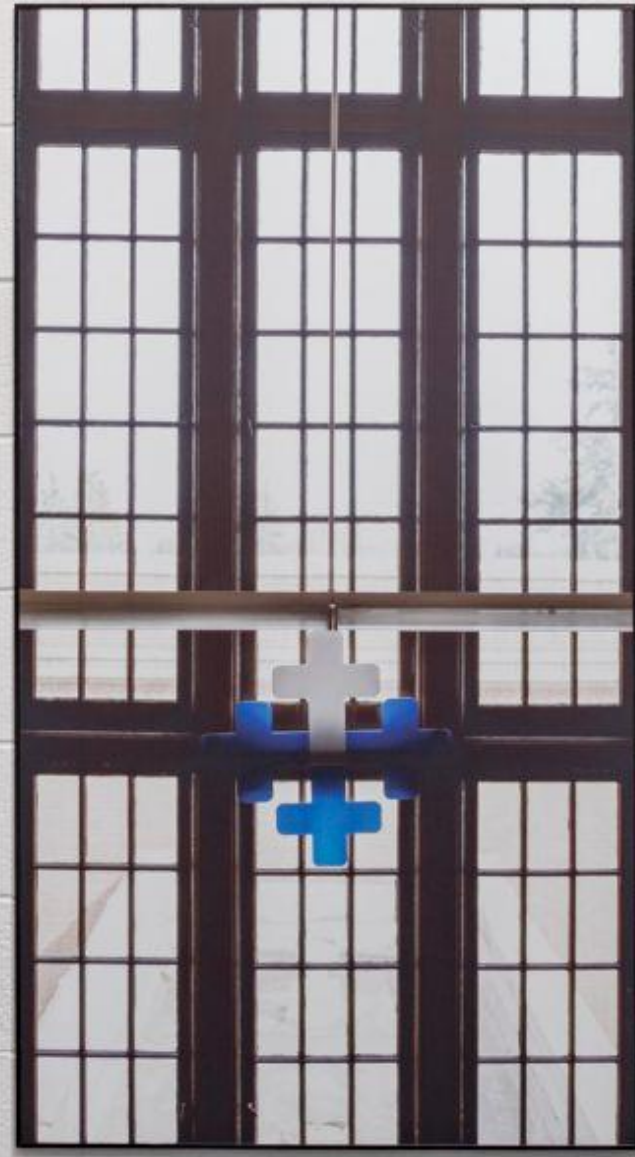
- LIGHT RENOVATION - paint, flooring, lighting
- MEDIUM RENOVATION - demo + new walls
- HEAVY RENOVATION - demo + exterior work, extensive rework
- NEW CONSTRUCTION (22,100 GSF)
- NOT IN SCOPE













- Academic Suite
 - Classrooms
 - Counseling Center
 - Academic Resource Center
 - Development Suite
 - Corporate Mark
 - Study Program
- Restrooms
 - Luxurious
 - Youth Ministry
 - Commons

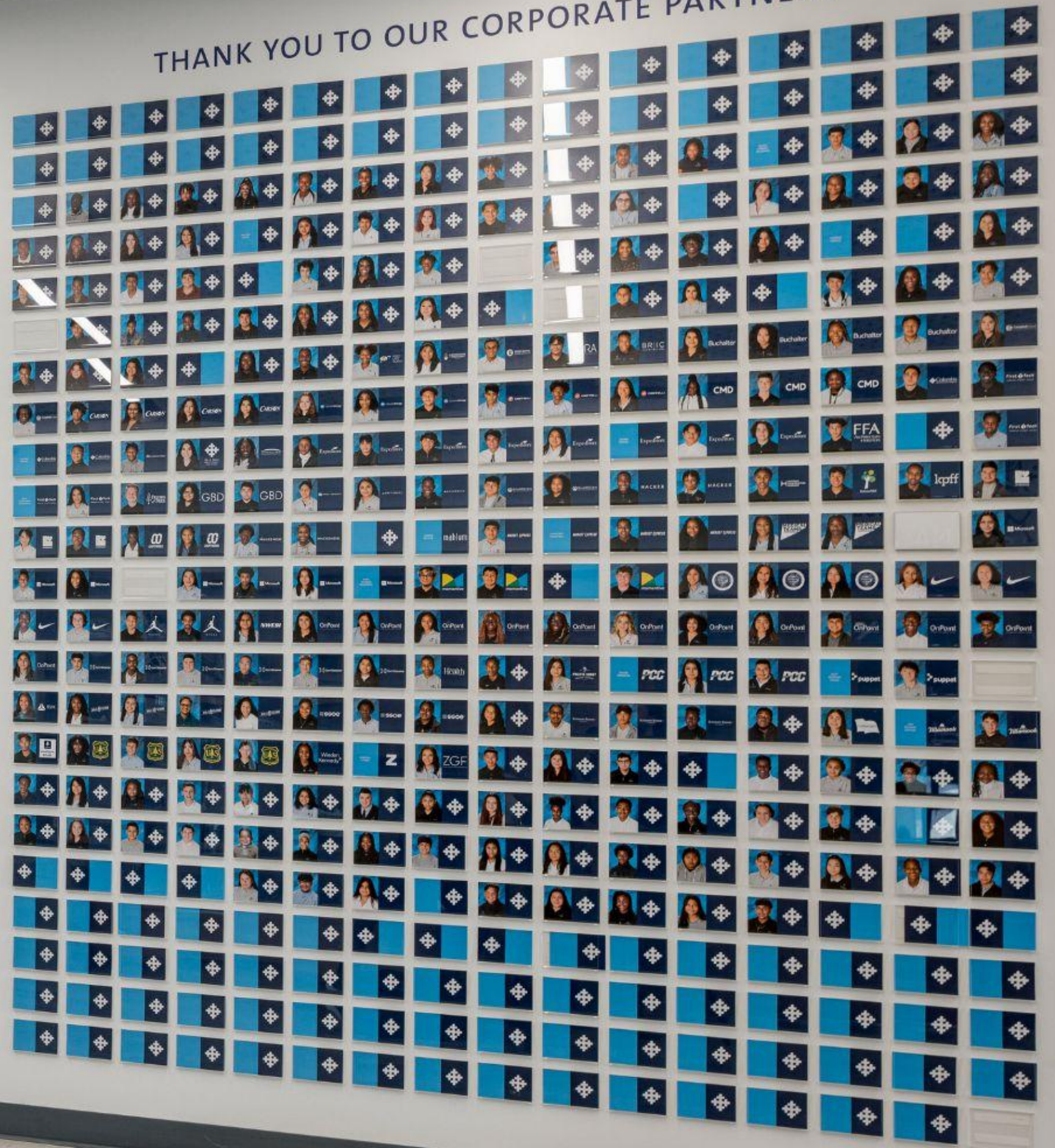


DE LA SALLE
NORTH CATHOLIC
HIGH SCHOOL

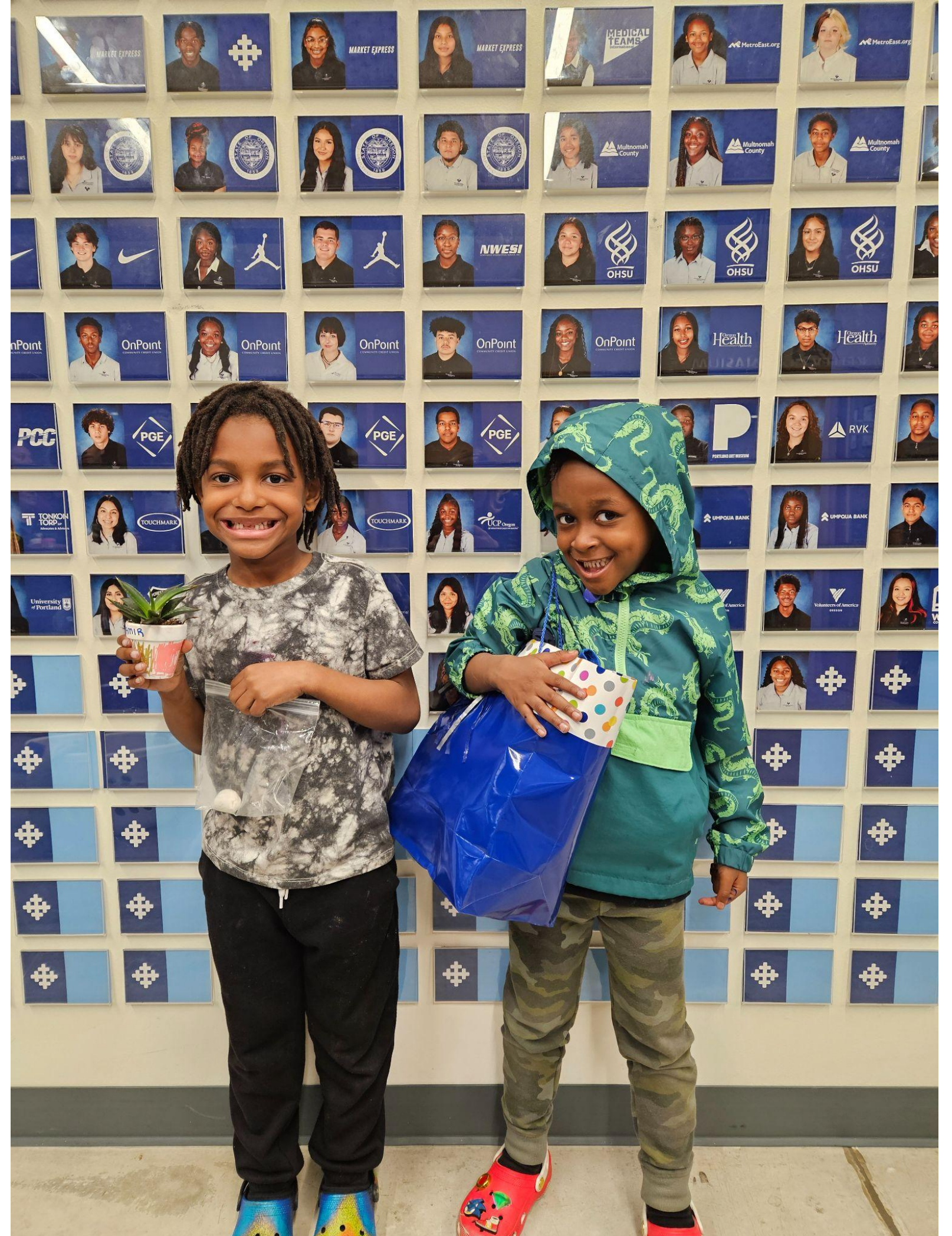
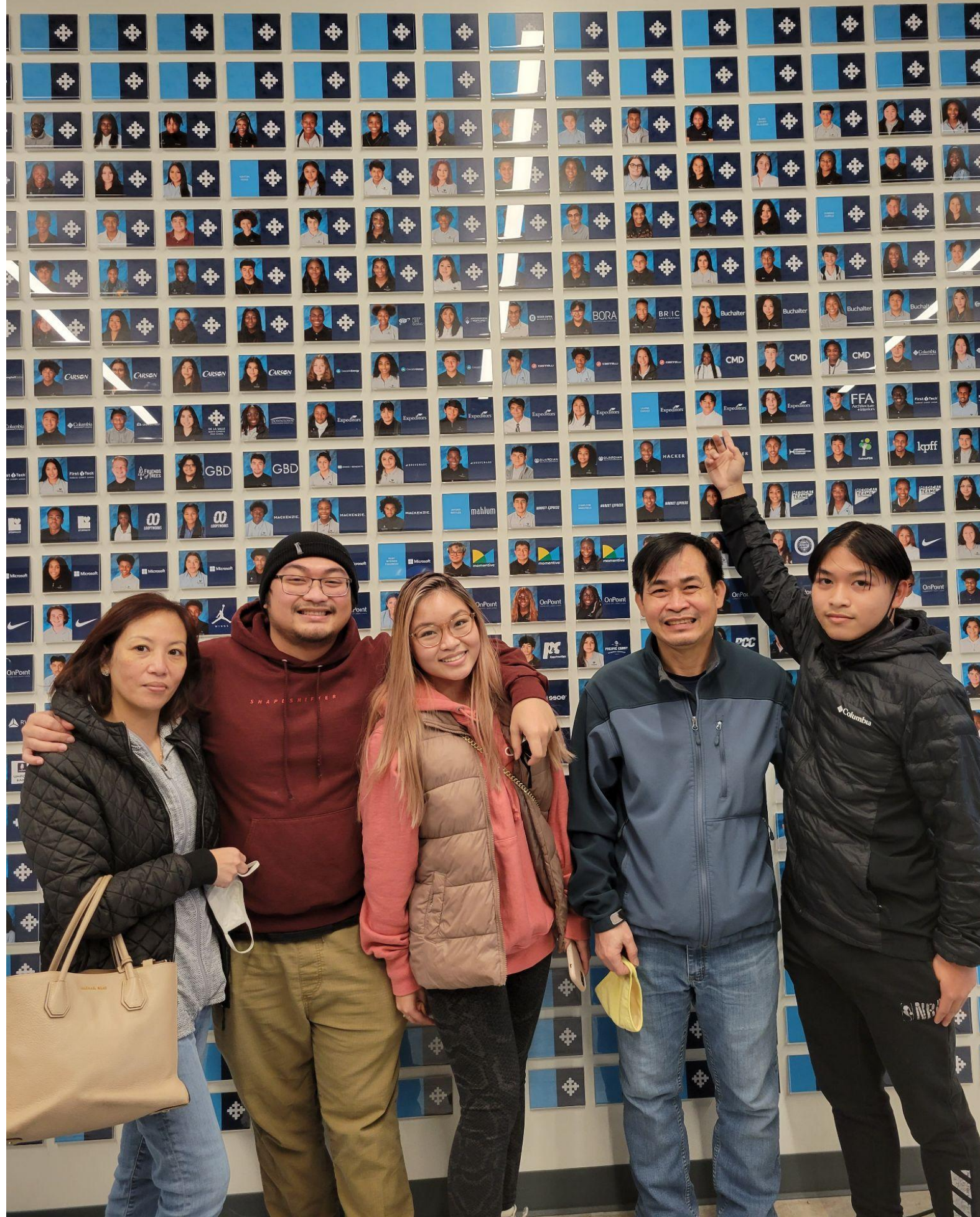
A member of the
CRISTO REY
NETWORK

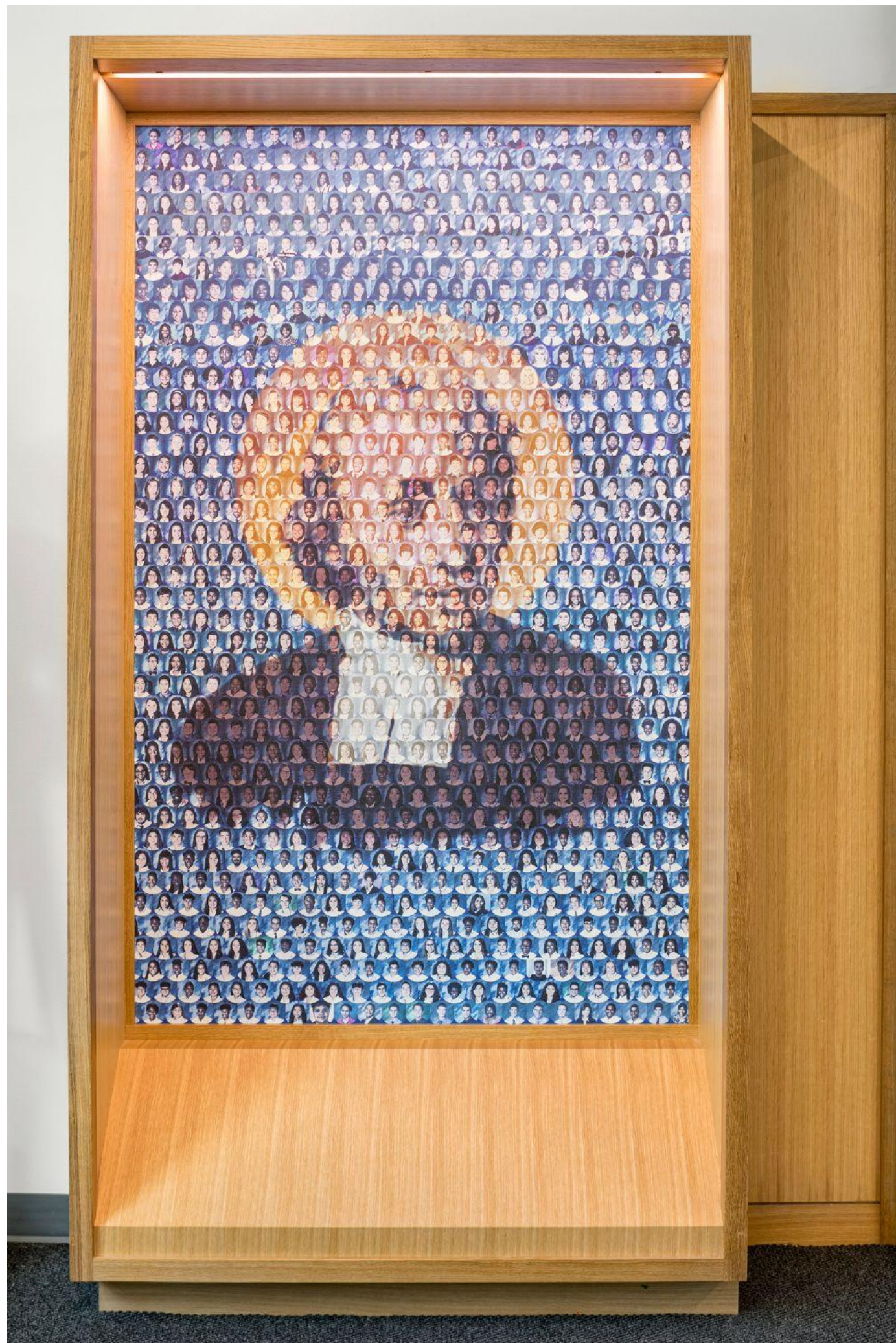


THANK YOU TO OUR CORPORATE PARTNERS

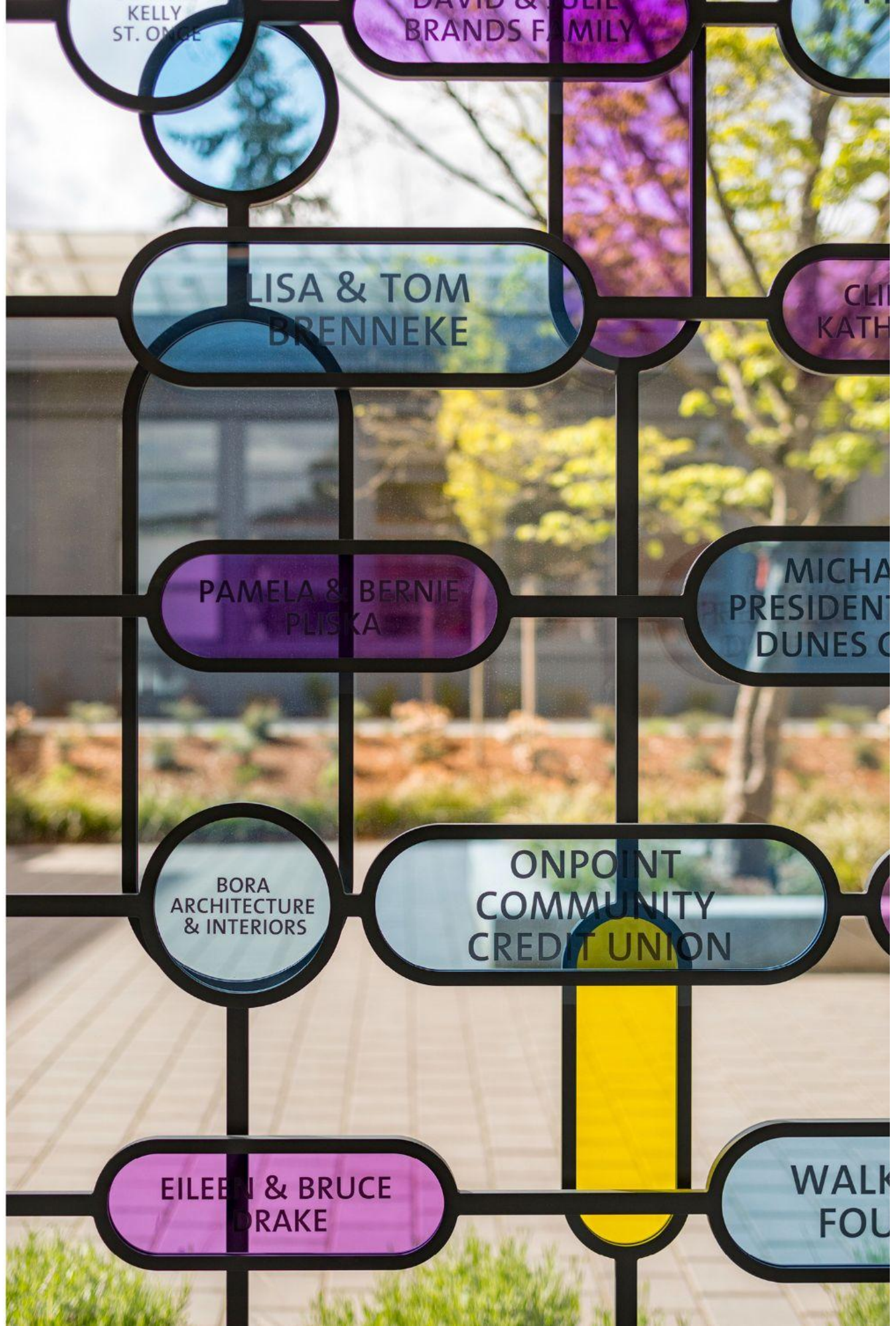
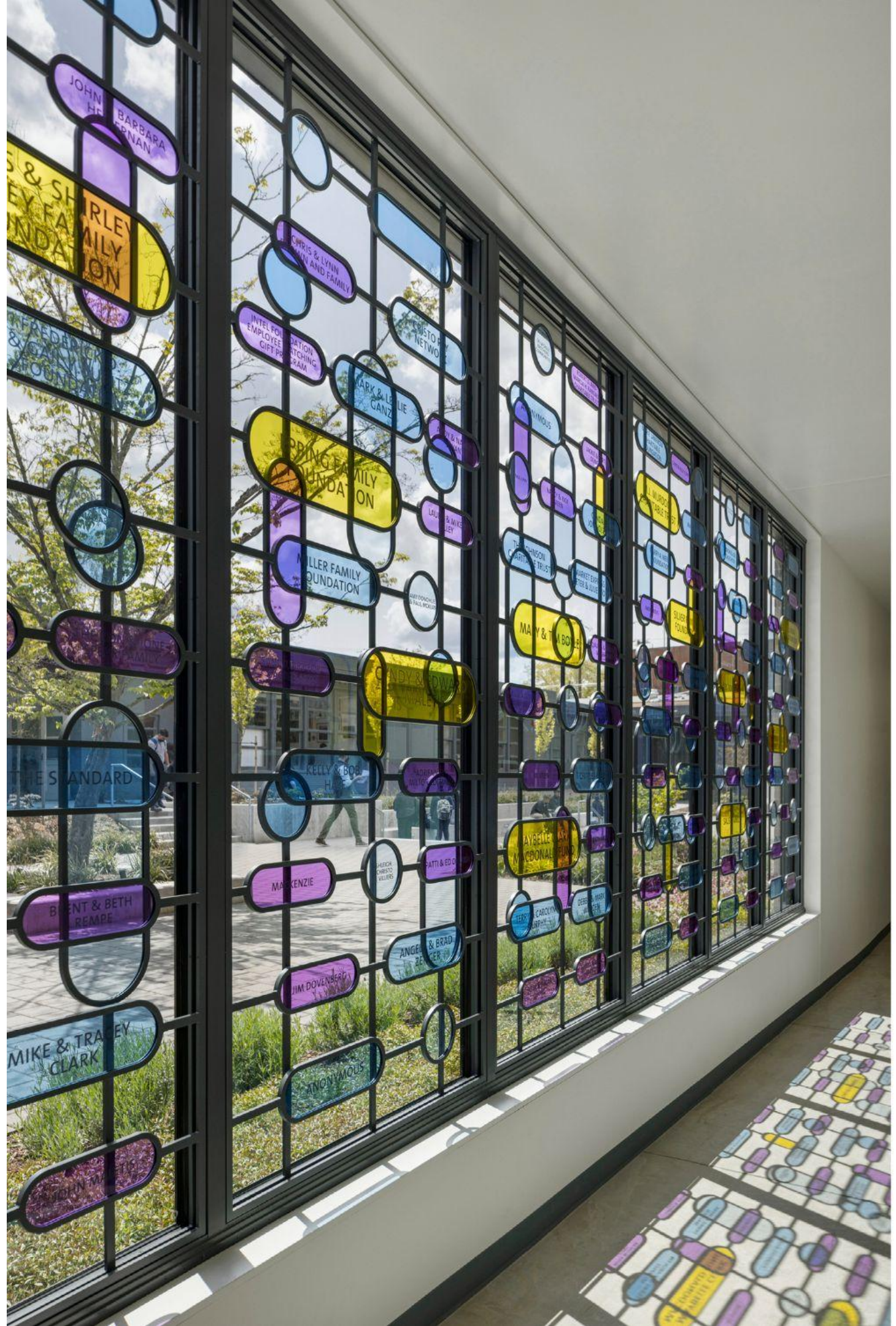


THANK YOU TO OUR CORPORATE PARTNERS











\$26M

\$26M

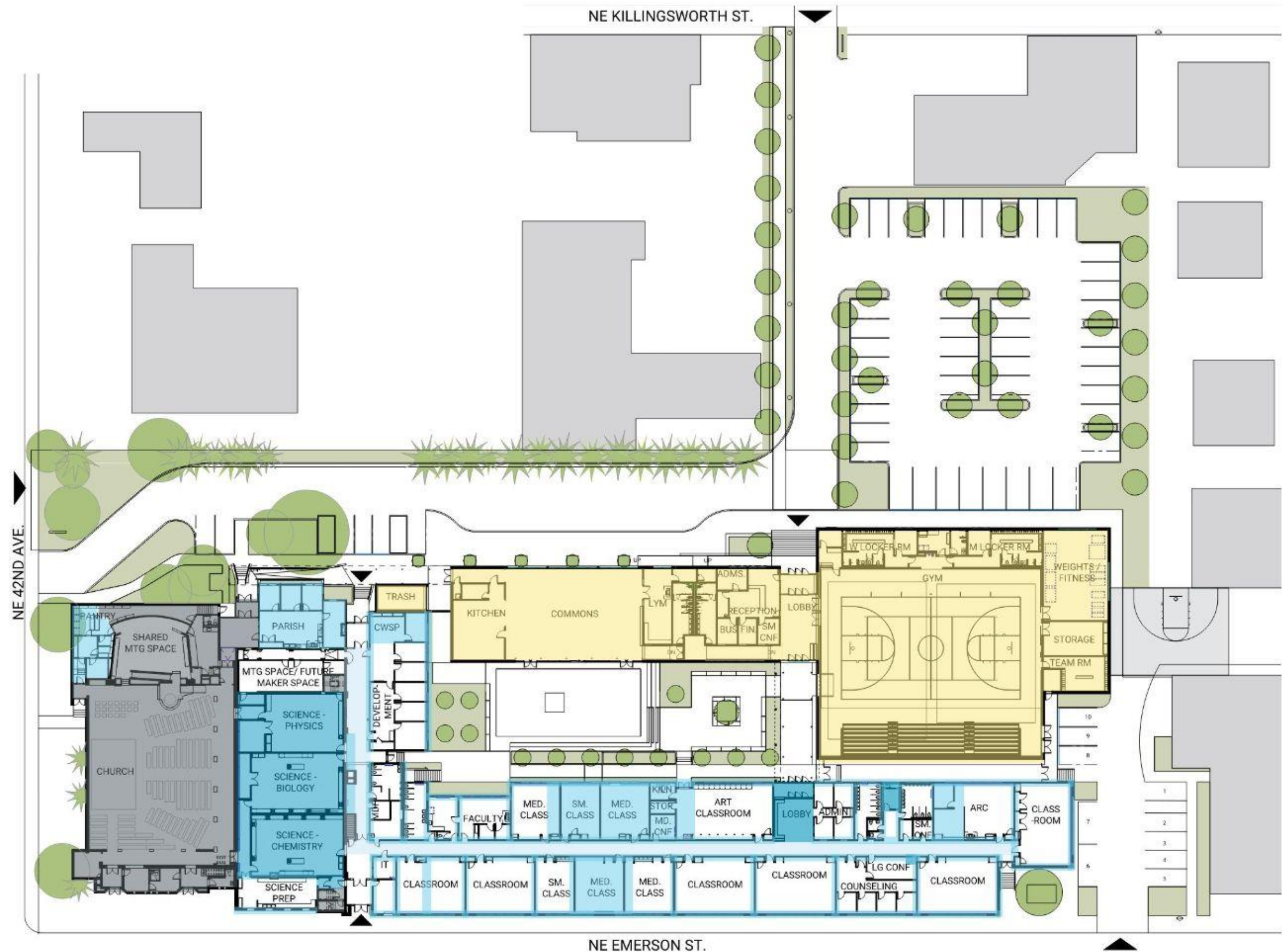
(in 17 months)

FLOOR PLAN

Program Accommodated:

- 12 General Classrooms
- Commons/ Kitchen
- Administration/ Admissions Space
- 3 Science Classrooms + Maker Space
- Fine Arts Program
- Physical Education/Gym
- Student Services
- Liturgical Space (shared with St. Charles)
- Courtyard

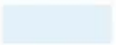


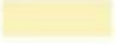
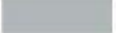
- LIGHT RENOVATION - paint, flooring, lighting
- MEDIUM RENOVATION - demo + new walls
- HEAVY RENOVATION - demo + exterior work, extensive rework
- NEW CONSTRUCTION (22,100 GSF)
- NOT IN SCOPE

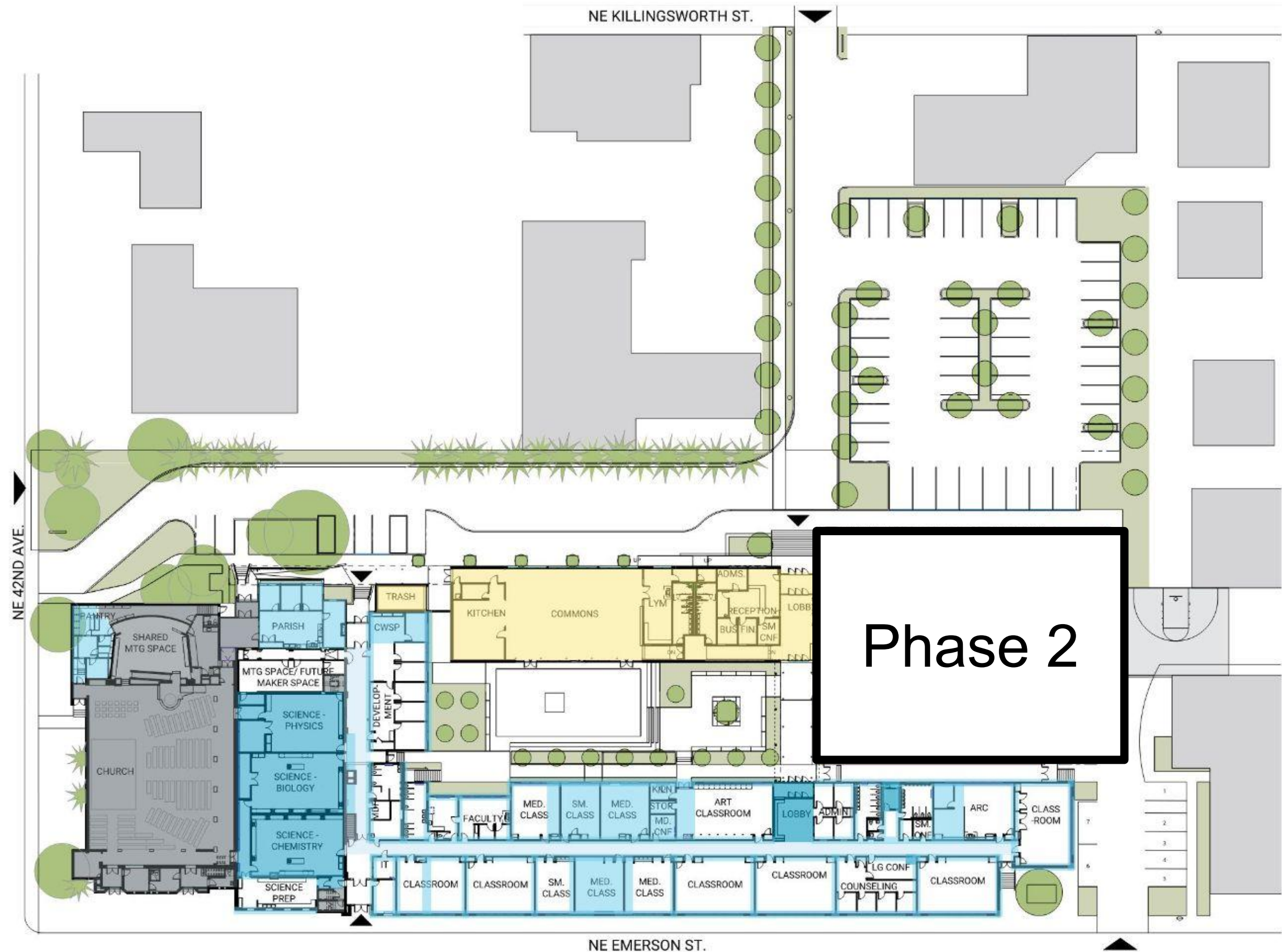


FLOOR PLAN

Program Accommodated:

- 12 General Classrooms
- Commons/ Kitchen
- Administration/ Admissions Space
- 3 Science Classrooms + Maker Space
- Fine Arts Program
- Physical Education/Gym
- Student Services
- Liturgical Space (shared with St. Charles)
- Courtyard

-  LIGHT RENOVATION - paint, flooring, lighting
-  MEDIUM RENOVATION - demo + new walls
-  HEAVY RENOVATION - demo + exterior work, extensive rework
-  NEW CONSTRUCTION (22,100 GSF)
-  NOT IN SCOPE







MEN'S BASKETBALL
3A STATE
CHAMPS
2018

HOME PERIOD GUEST

SALINA HENRY
TEAM ROOM





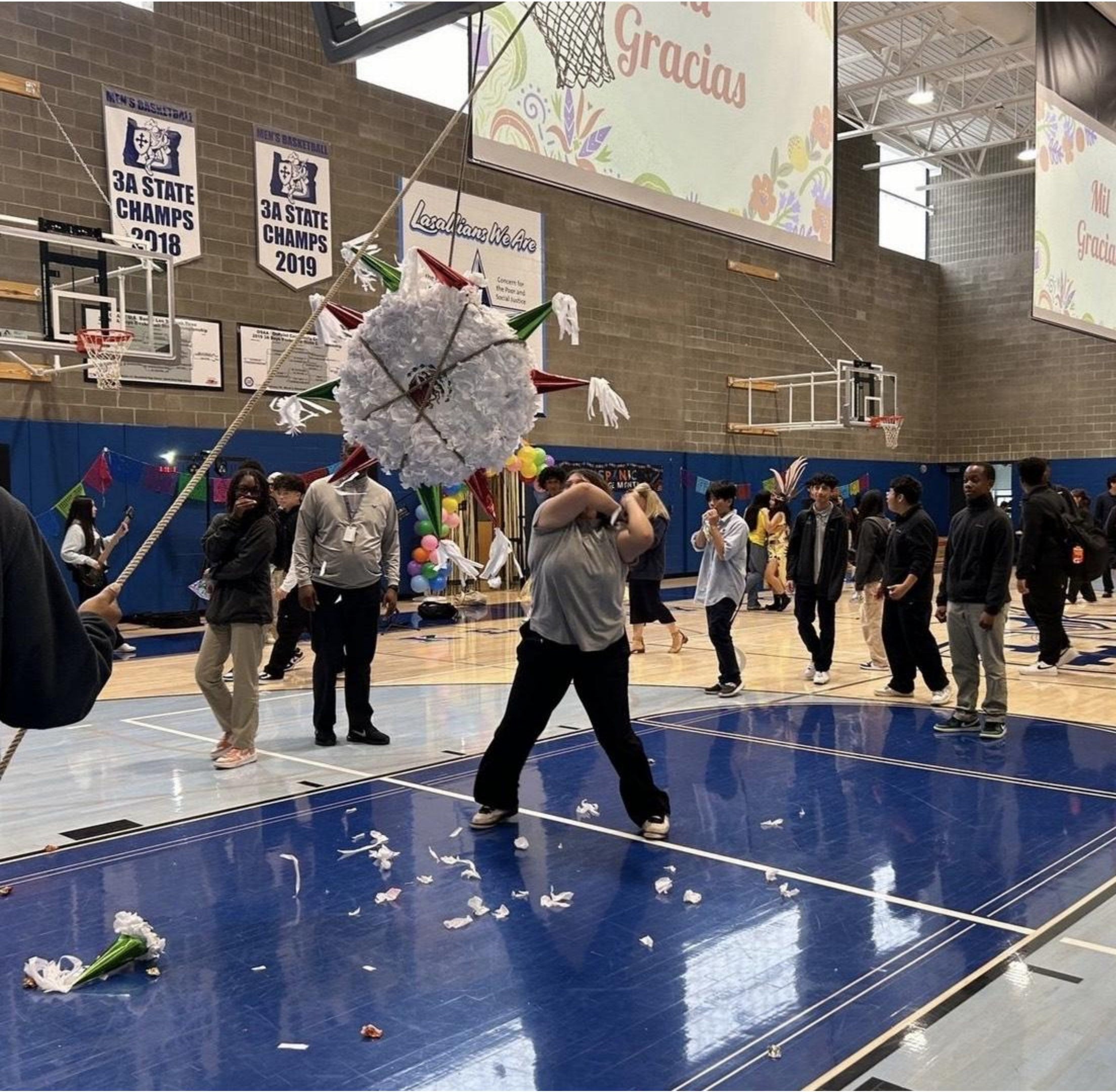
04

The Impact



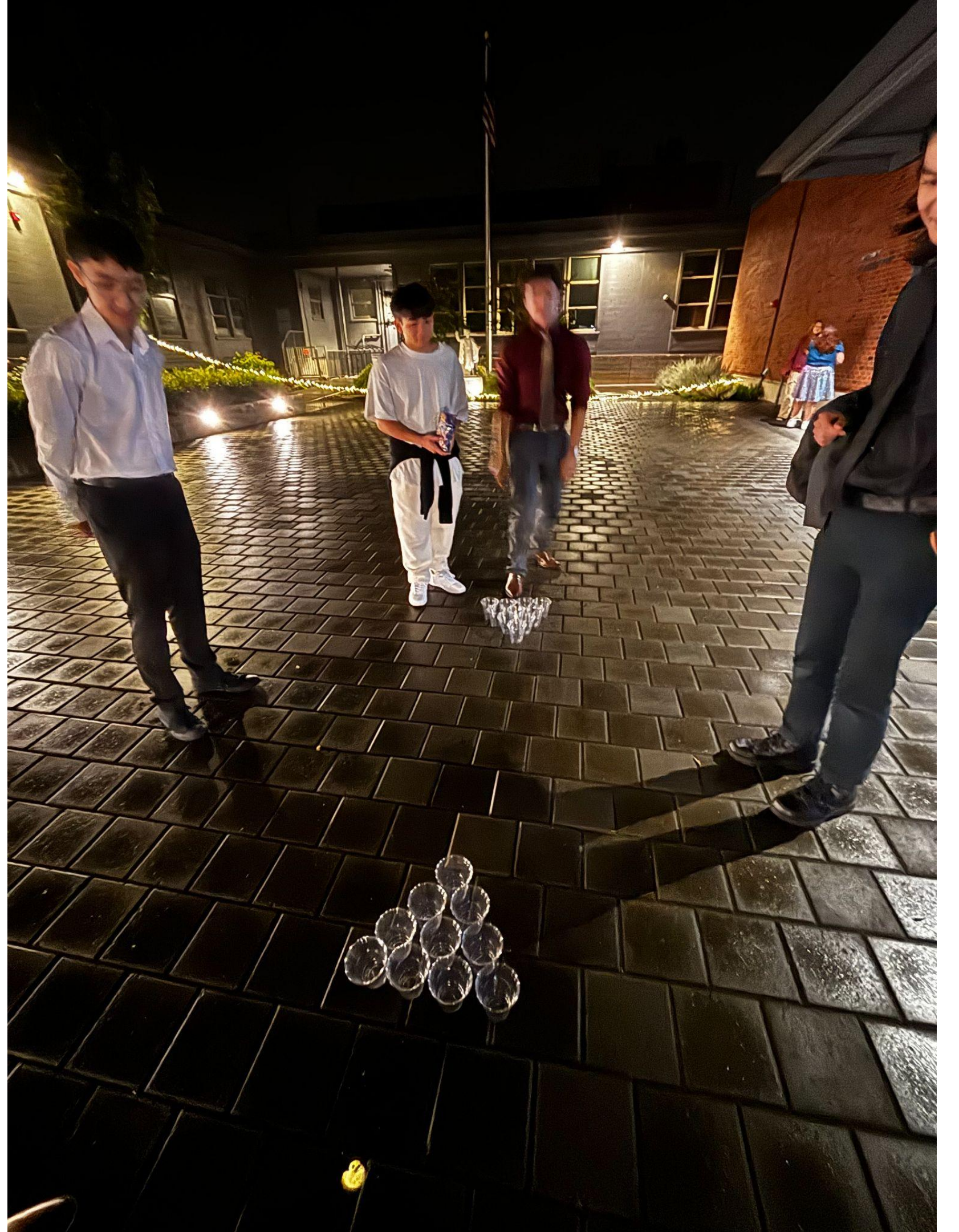












Macaron not Macaroon...



Macaron
(mah-kah-rohn)

A delicate, often brightly colored sandwich cookie made from almond flour, sugar, and egg whites, with a sweet filling.



A chewy, rich cookie made from egg whites, flaked coconut and sweetened condensed milk or sugar, often dipped in chocolate.



The 25th president
of France



Born Gu



Thank you!
Questions?